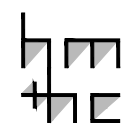
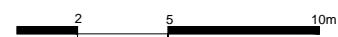


Por o lote ser muito grande e cercado por uma densa vegetação, não conseguimos determinar os limites do terreno e o final da agenciamento. O limite criado no nosso desenho é hipotético.



PROJETO: VILLA SAVOYE
ARQUITETURA: LE CORBUSIER
LOCAL: FRANÇA
ANO: 1928-31

PLANTA DE IMPLANTAÇÃO
ESCALA 1/250



HM+HC - LPPM - DA - UFPB

DISCIPLINA: H.A.U. III

ALUNOS: CIRO OTHON
REBECA TABOSA

DEBORAH MARTINS
SURAMA BATISTA

FILIPE VALENTIM
YURI FERRAZ

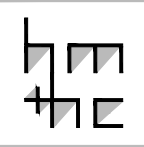
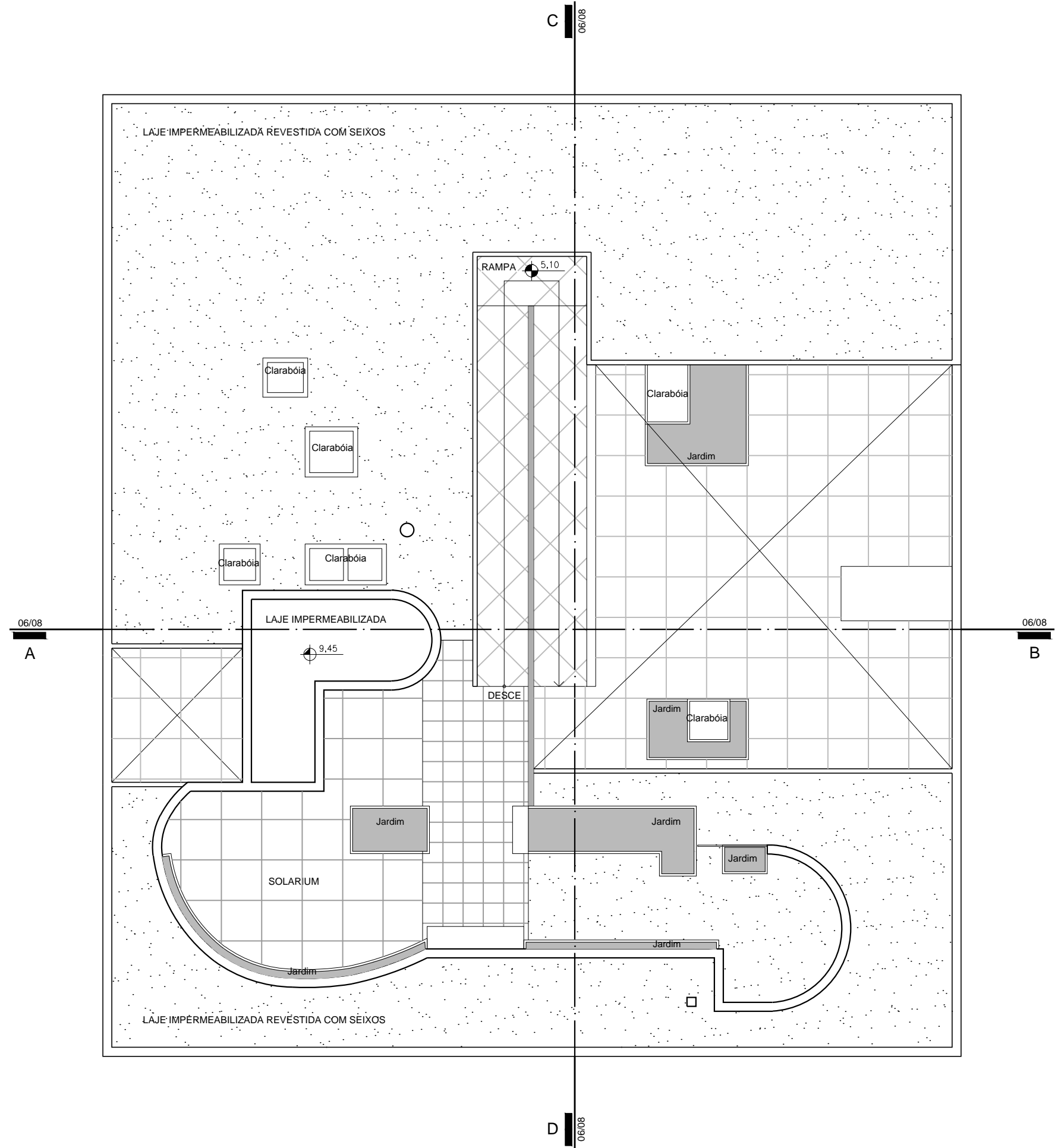
PERÍODO: 2012.1

PROFESSOR: MARCIO COTRIM CUNHA

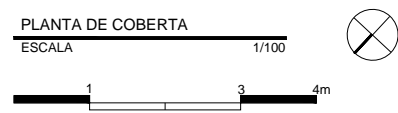
PRANCHA

01

08



PROJETO: VILLA SAVOYE
 ARQUITETURA: LE CORBUSIER
 LOCAL: FRANÇA
 ANO: 1928-31

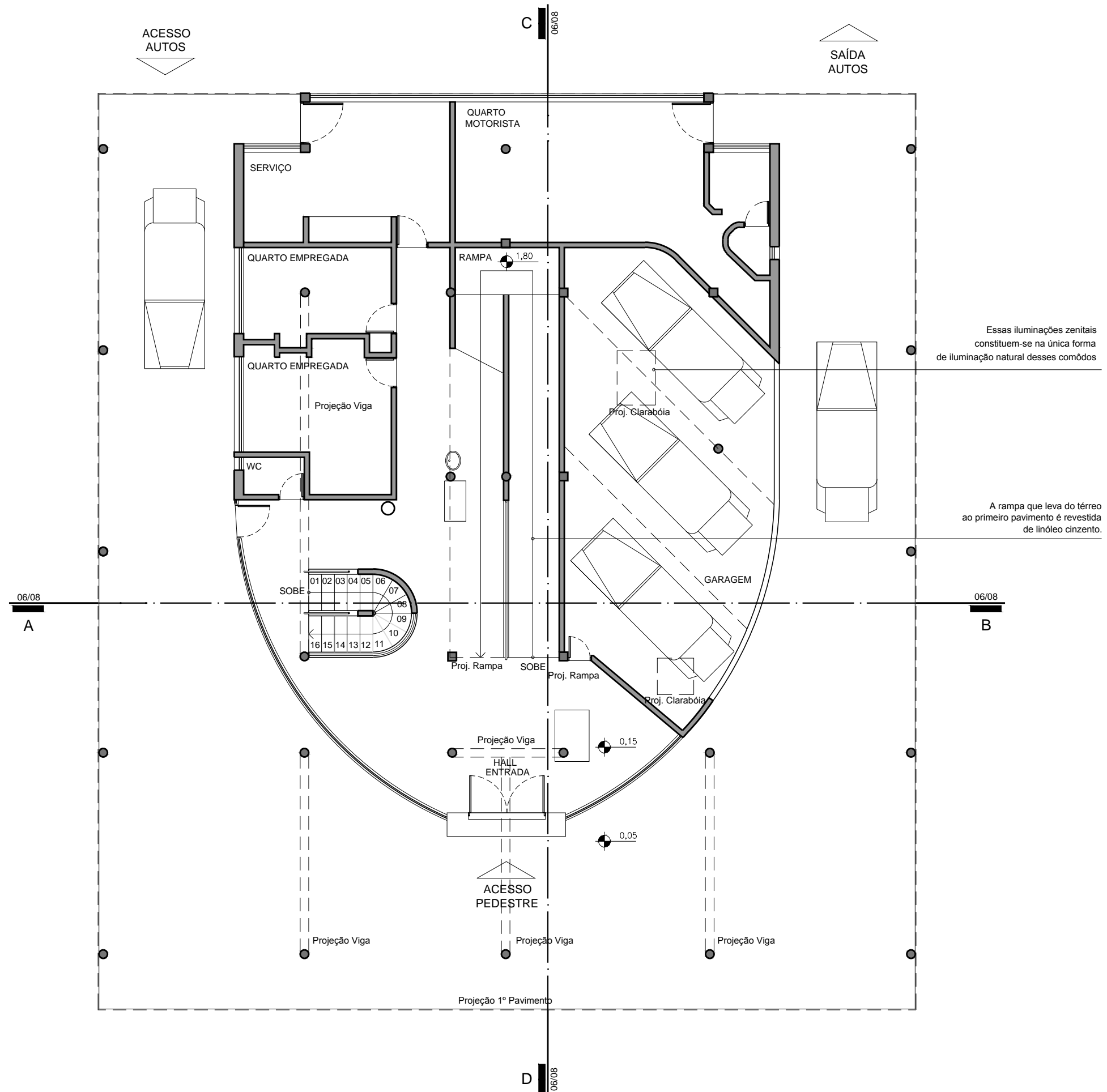


HM+HC - LPPM - DA - UFPB

DISCIPLINA: H.A.U. III

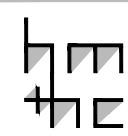
ALUNOS: CIRO OTHON DEBORAH MARTINS FILIPE VALENTIM
 REBECA TABOSA SURAMA BATISTA YURI FERRAZ

PERÍODO: 2012.1
 PROFESSOR: MARCIO COTRIM CUNHA

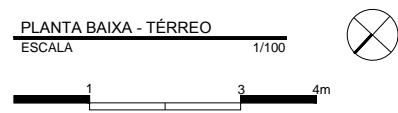


Essas iluminações zenitais constituem-se na única forma de iluminação natural desses cômodos

A rampa que leva do térreo ao primeiro pavimento é revestida de linóleo cinzento.

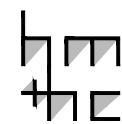
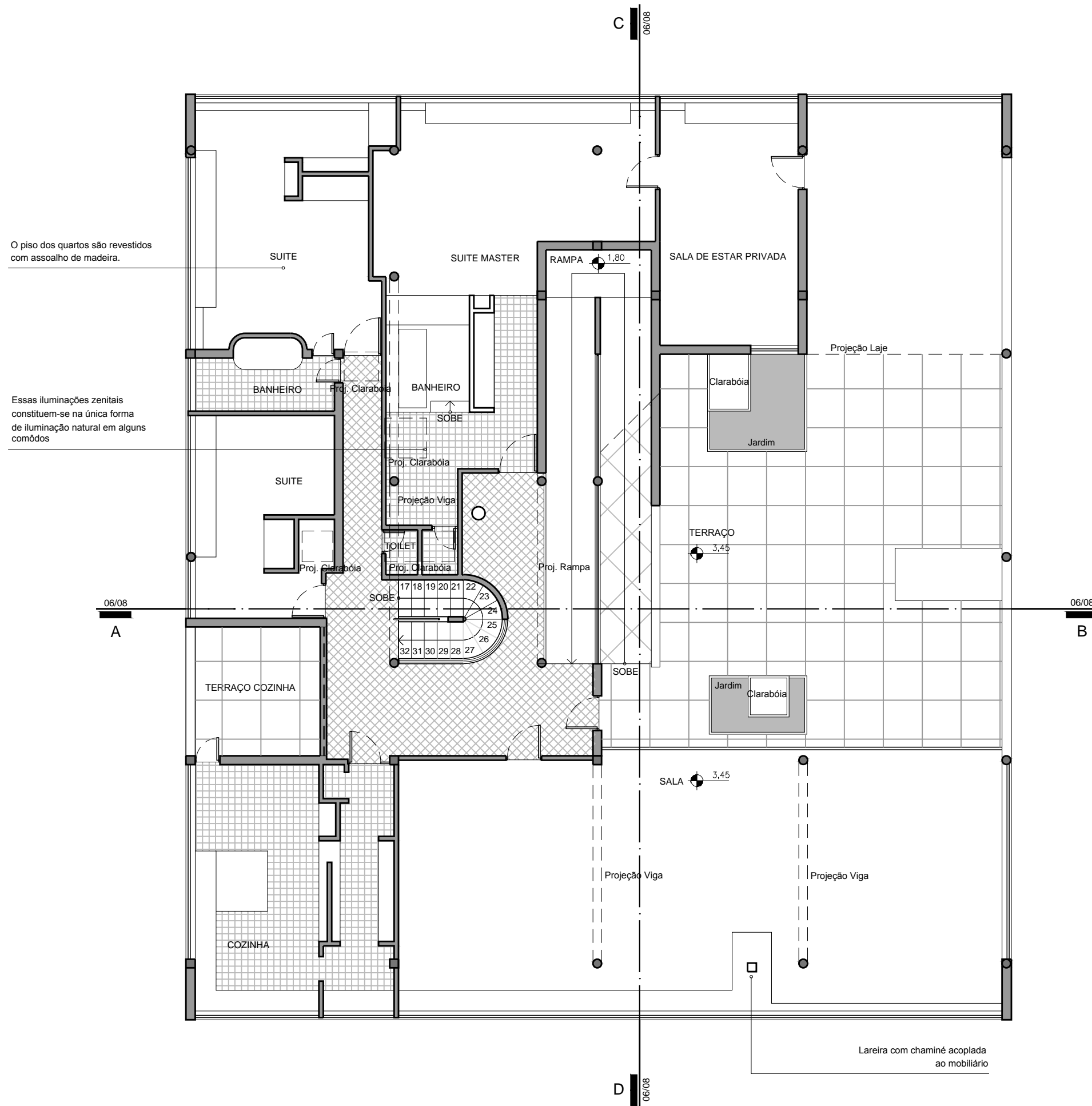


PROJETO: VILLA SAVOYE
 ARQUITETURA: LE CORBUSIER
 LOCAL: FRANÇA
 ANO: 1928-31



HM+HC - LPPM - DA - UFPB
 DISCIPLINA: H.A.U. III
 ALUNOS: CIRO OTHON, DEBORAH MARTINS, FILIPE VALENTIM, REBECA TABOSA, SURAMA BATISTA, YURI FERRAZ

PERÍODO: 2012.1
 PROFESSOR: MARCIO COTRIM CUNHA



PROJETO: VILLA SAVOYE
 ARQUITETURA: LE CORBUSIER
 LOCAL: FRANÇA
 ANO: 1928-31

PLANTA BAIXA - 1º PAVIMENTO
 ESCALA 1/100



HM+HC - LPPM - DA - UFPB

DISCIPLINA: H.A.U. III

ALUNOS: CIRO OTHON

REBECA TABOSA

DEBORAH MARTINS

SURAMA BATISTA

FILIPE VALENTIM

YURI FERRAZ

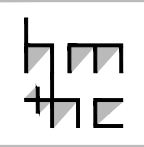
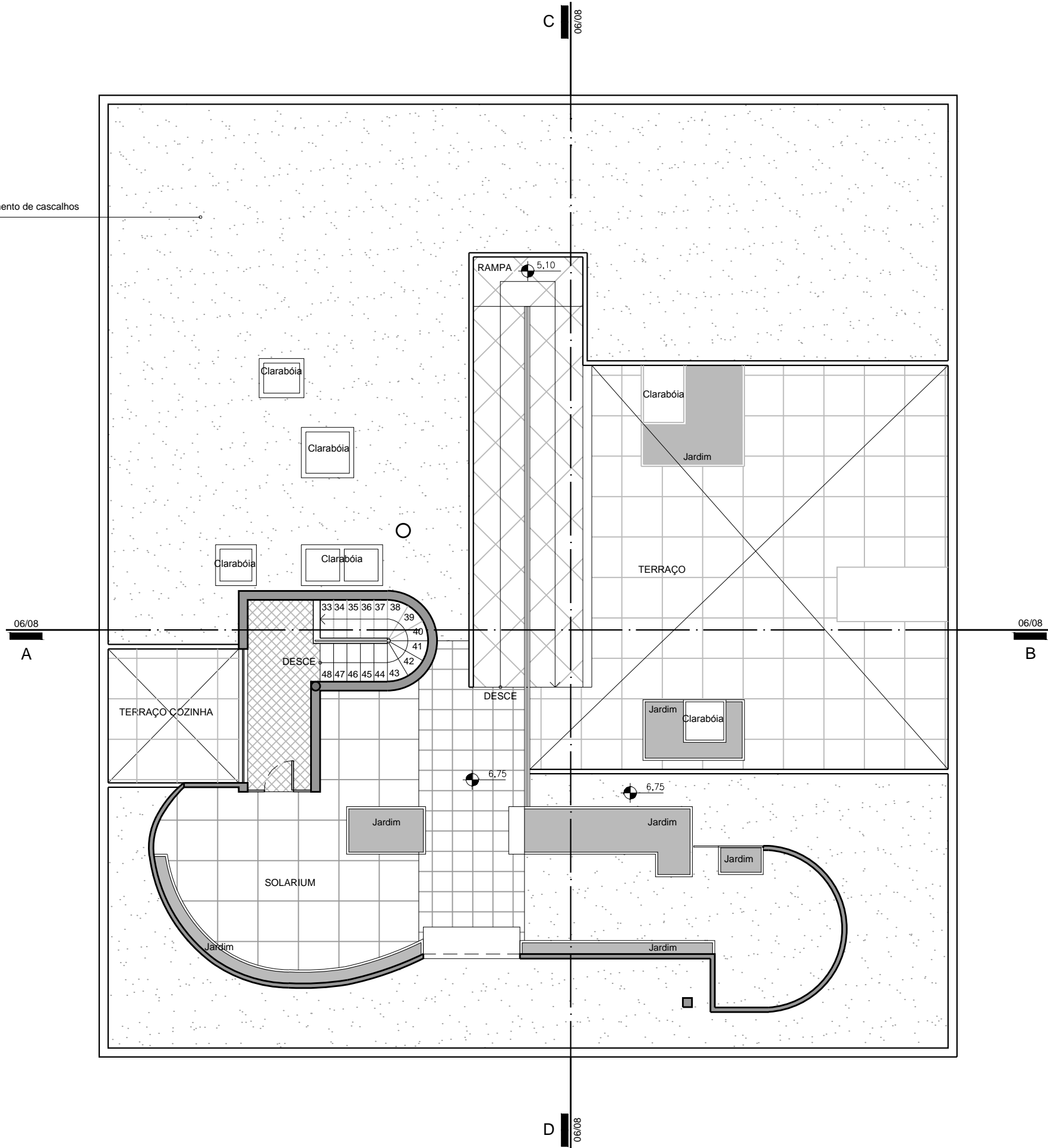
PERÍODO: 2012.1

PROFESSOR: MARCIO COTRIM CUNHA

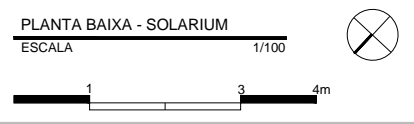
PRANCHA

04
08

Laje com revestimento de cascalhos

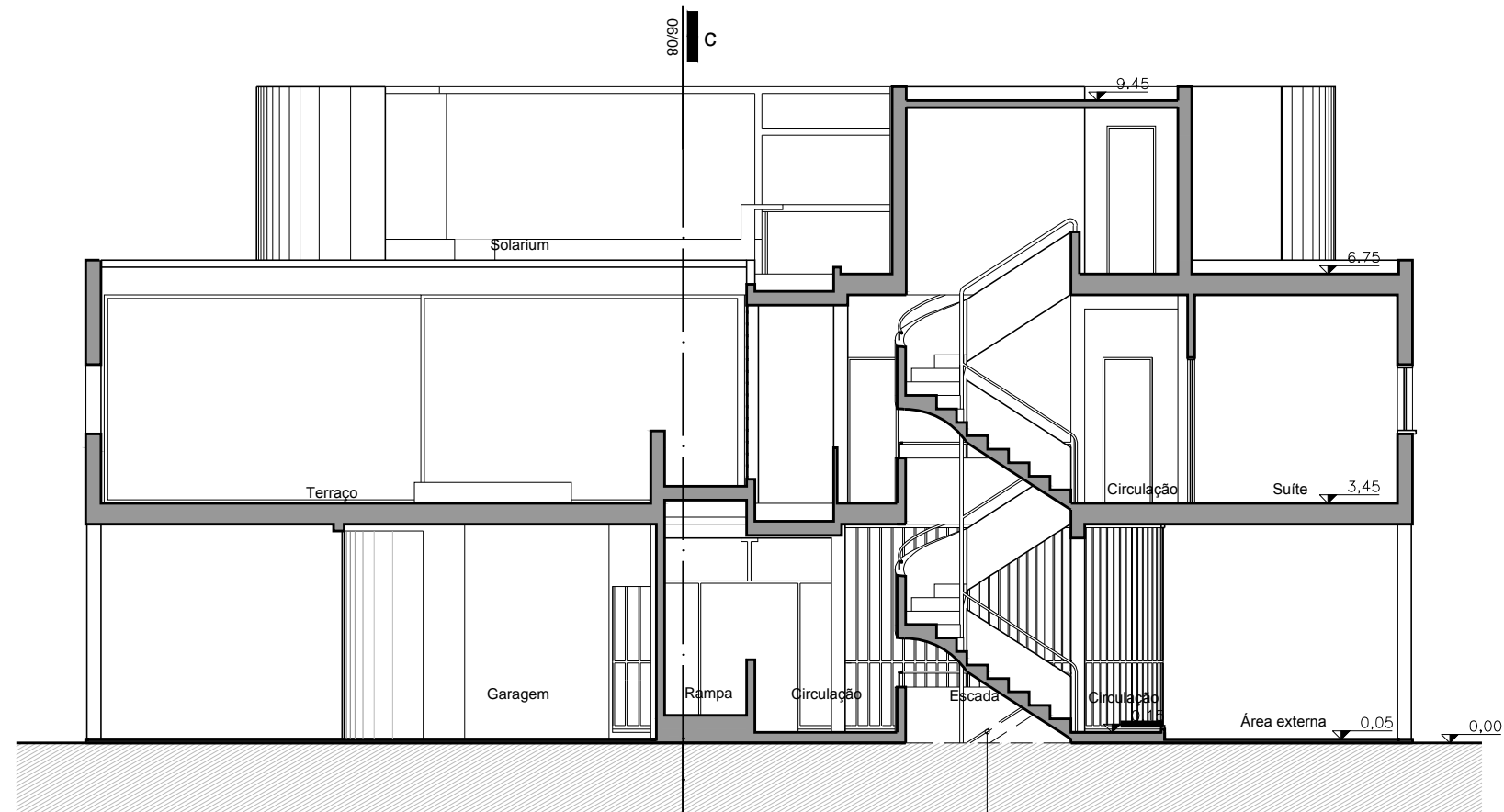


PROJETO: VILLA SAVOYE
 ARQUITETURA: LE CORBUSIER
 LOCAL: FRANÇA
 ANO: 1928-31

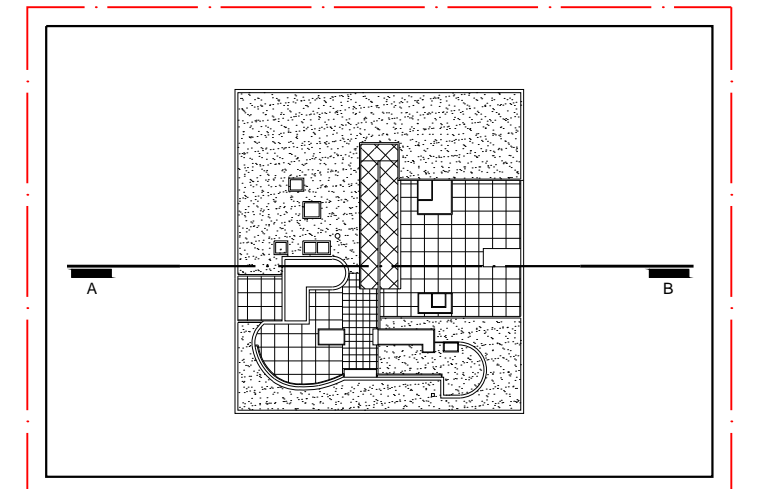


HM+HC - LPPM - DA - UFPB
 DISCIPLINA: H.A.U. III
 ALUNOS: CIRO OTHON DEBORAH MARTINS FILIPE VALENTIM
 REBECA TABOSA SURAMA BATISTA YURI FERRAZ

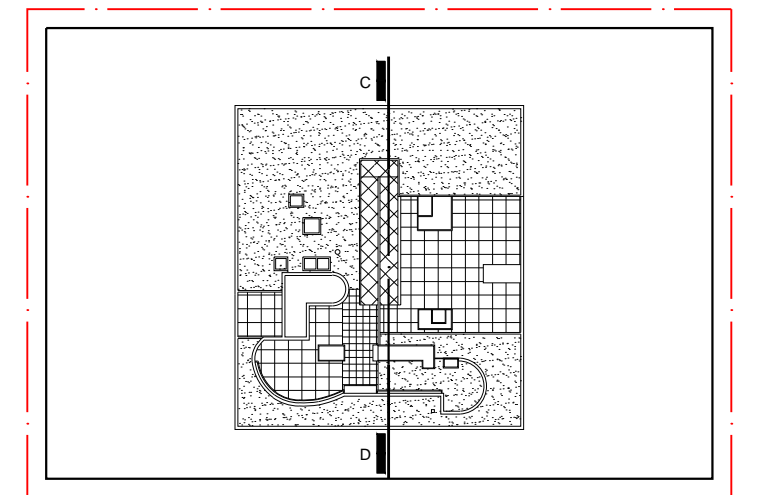
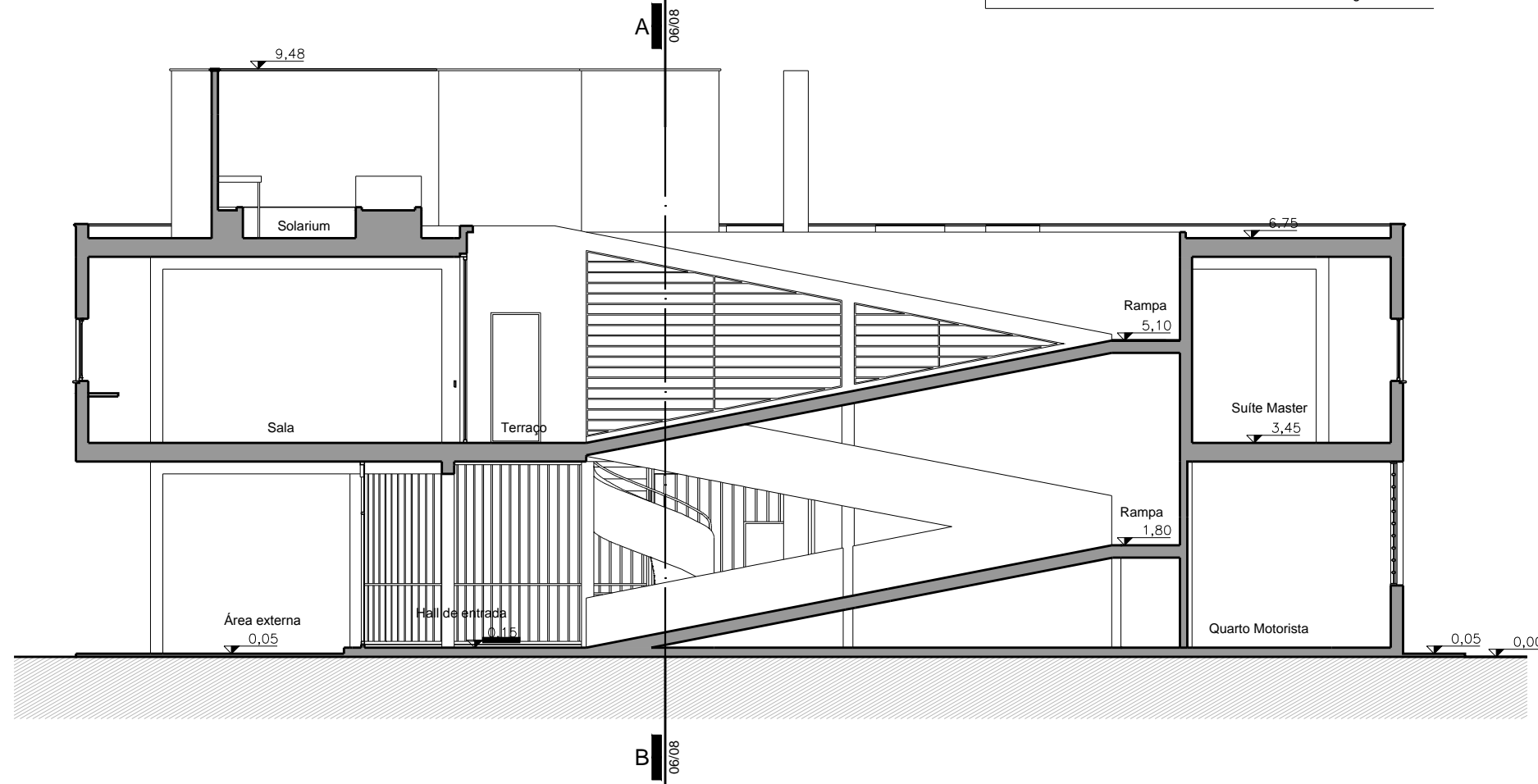
PERÍODO: 2012.1
 PROFESSOR: MARCIO COTRIM CUNHA



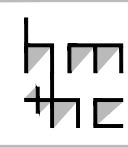
Percebemos por meio de registros fotográficos que a escada do pavimento térreo desce para um nível inferior. No entanto, não temos como afirmar / representar a existência de algum subsolo.



INDICAÇÃO CORTE AB
ESCALA 1/500

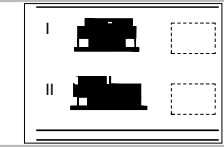


INDICAÇÃO CORTE CD
ESCALA 1/500



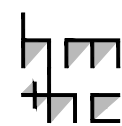
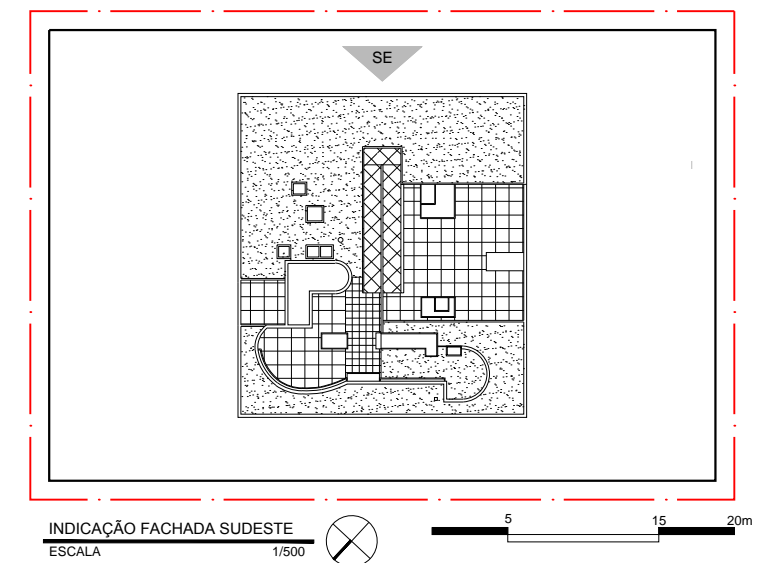
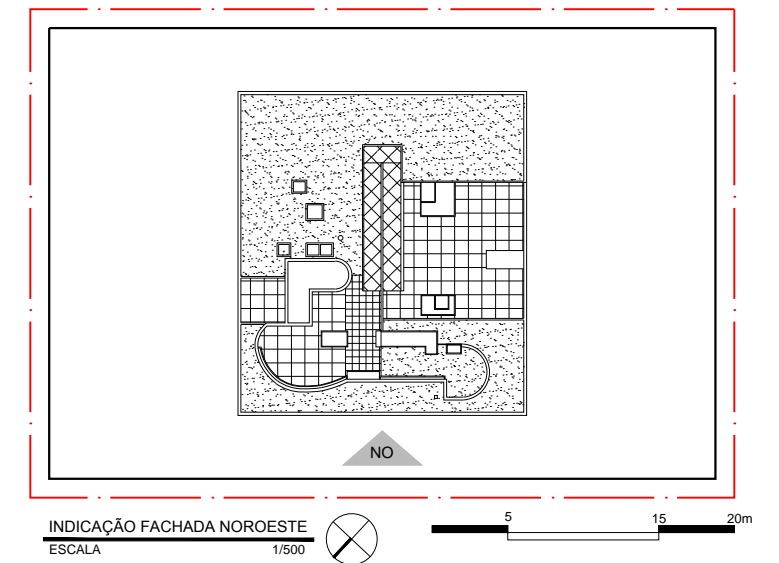
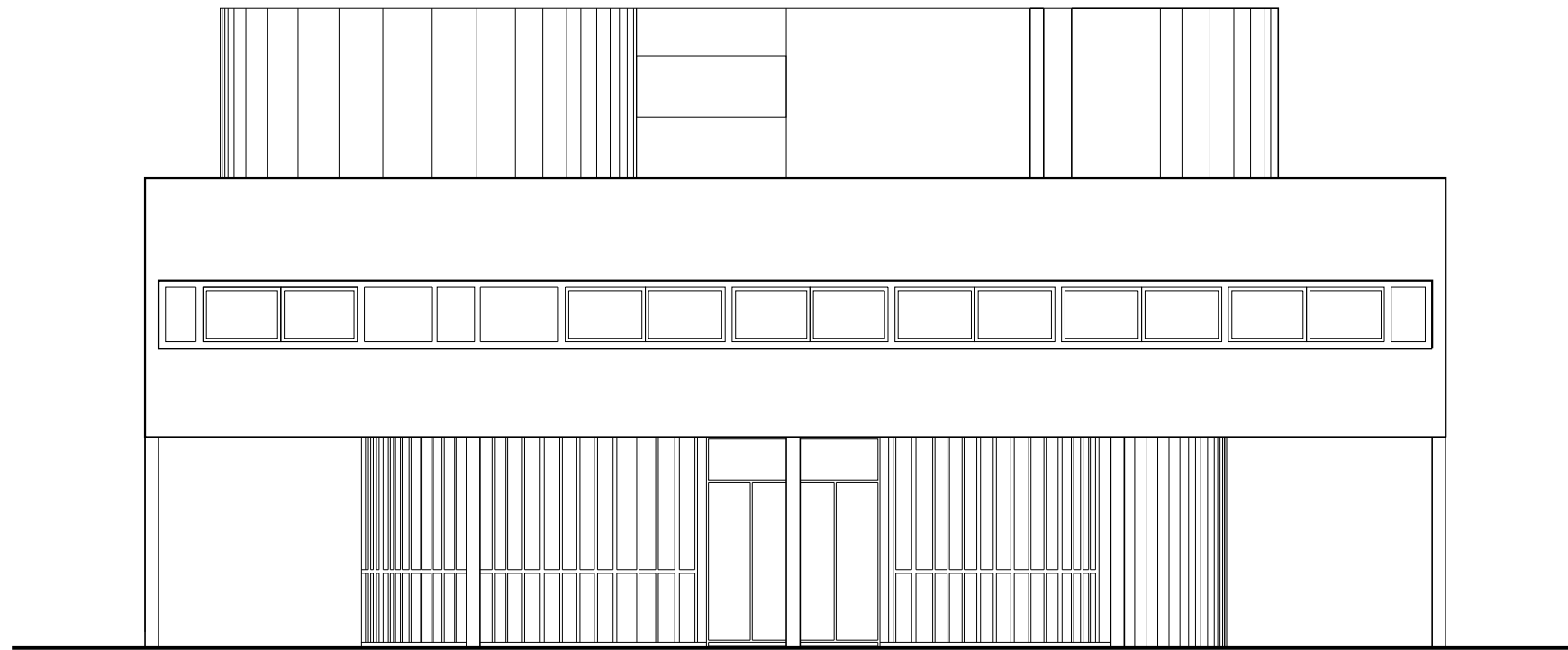
PROJETO: VILLA SAVOYE
ARQUITETURA: LE CORBUSIER
LOCAL: FRANÇA
ANO: 1928-31

I. CORTE AB
ESCALA 1/100
II. CORTE CD
ESCALA 1/100



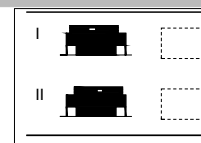
HM+HC - LPPM - DA - UFPB
DISCIPLINA: H.A.U. III
ALUNOS: CIRO OTHON DEBORAH MARTINS FILIPE VALENTIM
REBECA TABOSA SURAMA BATISTA YURI FERRAZ

PERÍODO: 2012.1
PROFESSOR: MARCIO COTRIM CUNHA



PROJETO: VILLA SAVOYE
 ARQUITETURA: LE CORBUSIER
 LOCAL: FRANÇA
 ANO: 1928-31

I. FACHADA NOROESTE
 ESCALA 1/100
II. FACHADA SUDESTE
 ESCALA 1/100



HM+HC - LPPM - DA - UFPB

DISCIPLINA: H.A.U. III

ALUNOS: CIRO OTHON

REBECA TABOSA

DEBORAH MARTINS

SURAMA BATISTA

FILIPE VALENTIM

YURI FERRAZ

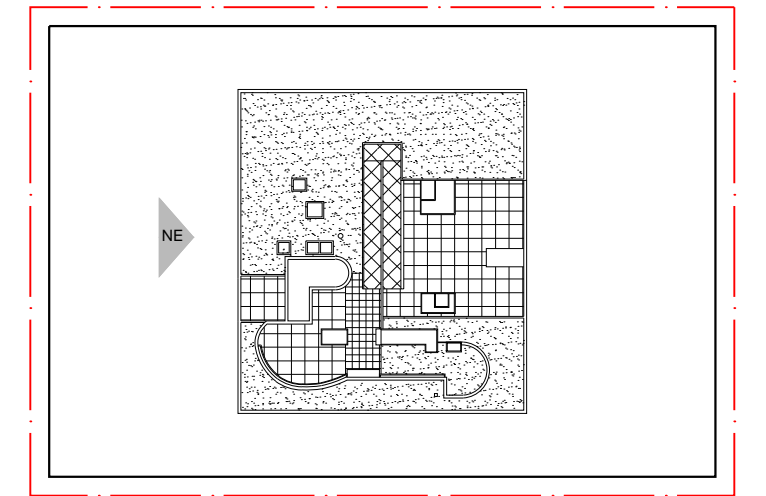
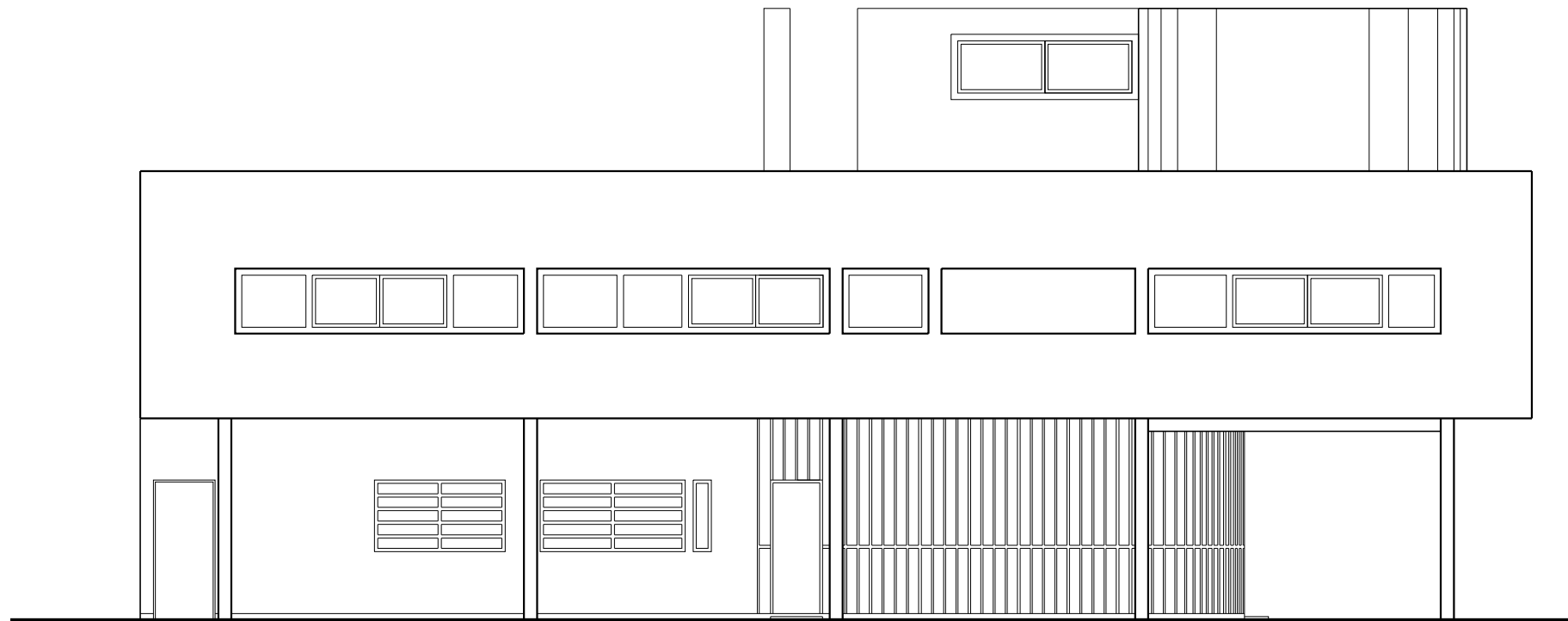
PERÍODO: 2012.1

PROFESSOR: MARCIO COTRIM CUNHA

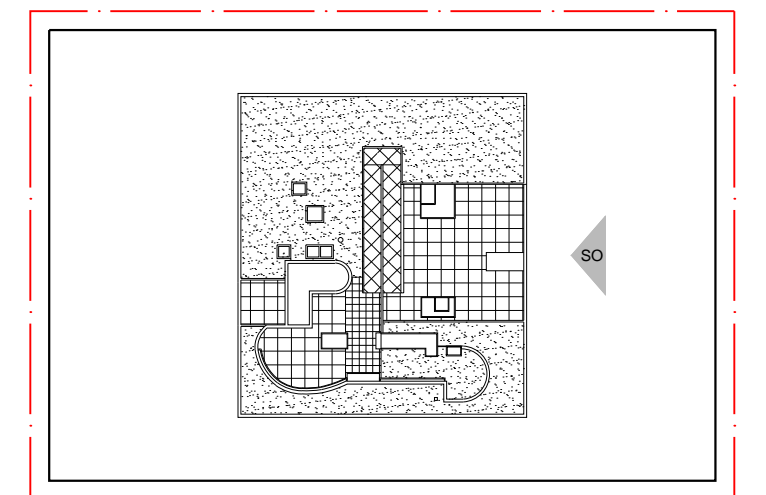
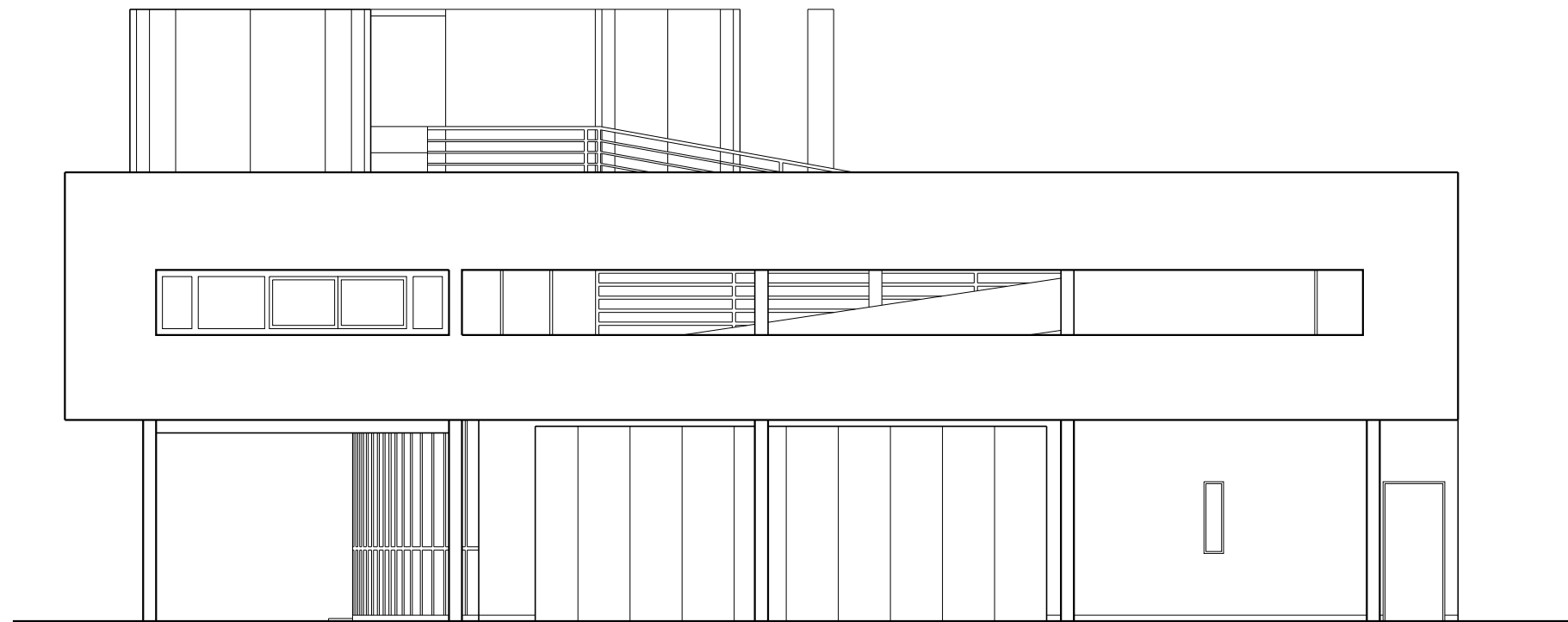
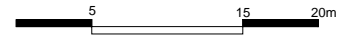
PRANCHA

07

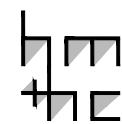
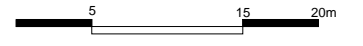
08



INDICAÇÃO FACHADA NORDESTE
 ESCALA 1/500

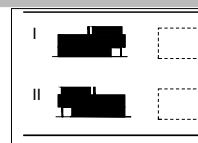


INDICAÇÃO FACHADA SUDOESTE
 ESCALA 1/500



PROJETO: VILLA SAVOYE
 ARQUITETURA: LE CORBUSIER
 LOCAL: FRANÇA
 ANO: 1928-31

I. FACHADA NORDESTE
 ESCALA 1/100
 II. FACHADA SUDOESTE
 ESCALA 1/100



HM+HC - LPPM - DA - UFPB

DISCIPLINA: H.A.U. III

ALUNOS: CIRO OTHON

REBECA TABOSA

DEBORAH MARTINS

SURAMA BATISTA

FILIFE VALENTIM

YURI FERRAZ

PERÍODO: 2012.1

PROFESSOR: MARCIO COTRIM CUNHA

PRANCHA

08

08