

PROJETO: VILLA DALL'AVA
ARQUITETURA: REM KOOLHAAS
LOCAL: PARIS, FRANÇA
ANO: 1985 - 1991

PLANTA DE LOCALIZAÇÃO
ESCALA 1/500



HM+HC - LPPM - DA - UFPB

DISCIPLINA: H.A.U. IV
ALUNOS: ISABELA CAMPOS
RODRIGO ALCÂNTRA

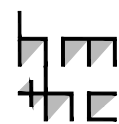
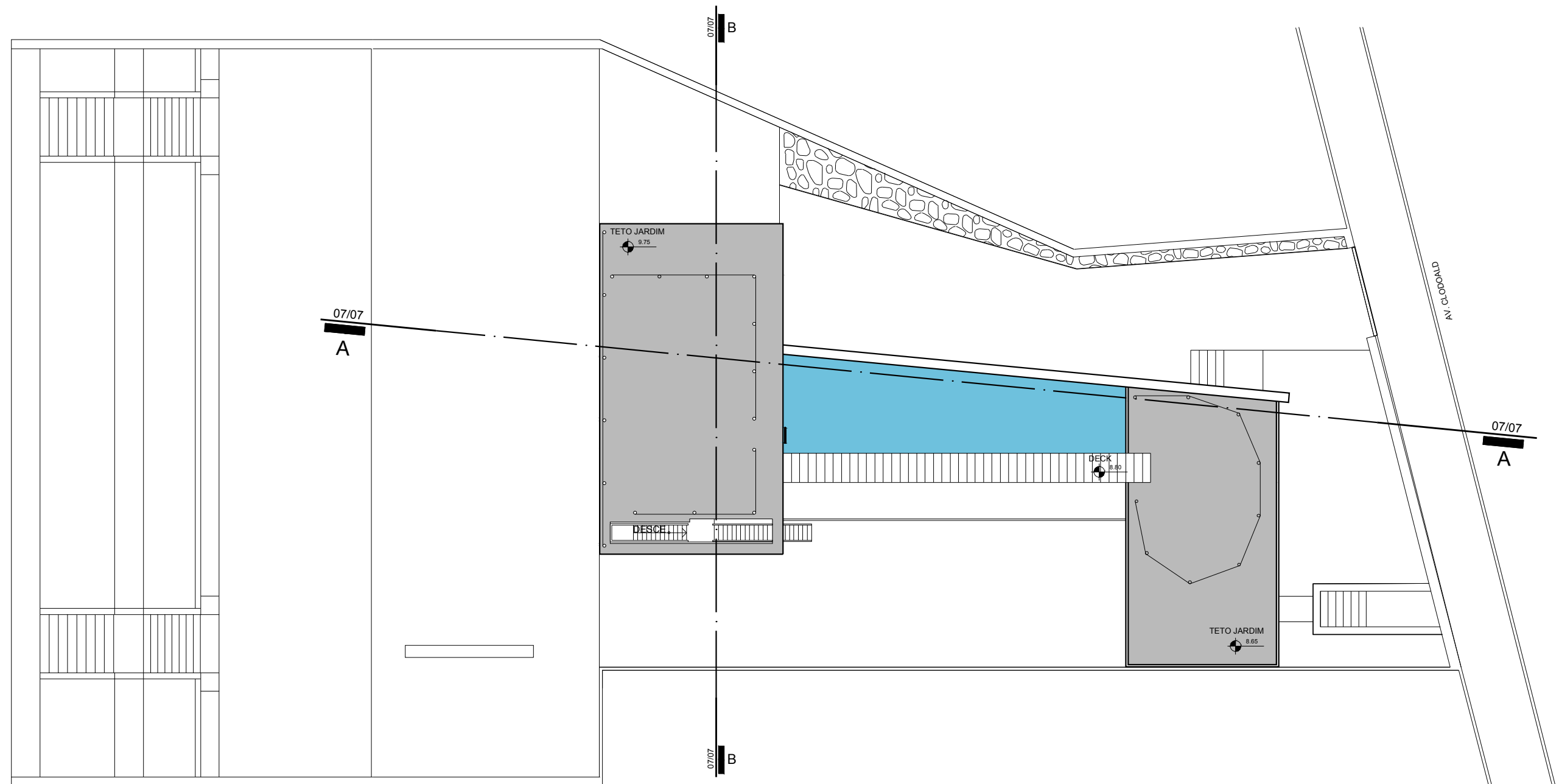
YASMIN PEREGRINO

PERÍODO: 2012.1
PROFESSOR: WYLNNA VIDAL

PRANCHA

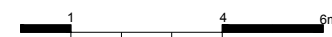
01

08



PROJETO: VILLA DALL'AVA
 ARQUITETURA: REM KOOLHAAS
 LOCAL: PARIS, FRANÇA
 ANO: 1985 - 1991

PLANTA DE IMPLANTAÇÃO E COBERTA
 ESCALA 1/150



HM+HC - LPPM - DA - UFPB

DISCIPLINA: H.A.U. IV

ALUNOS: ISABELA CAMPOS
 RODRIGO ALCÂNTRA

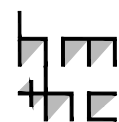
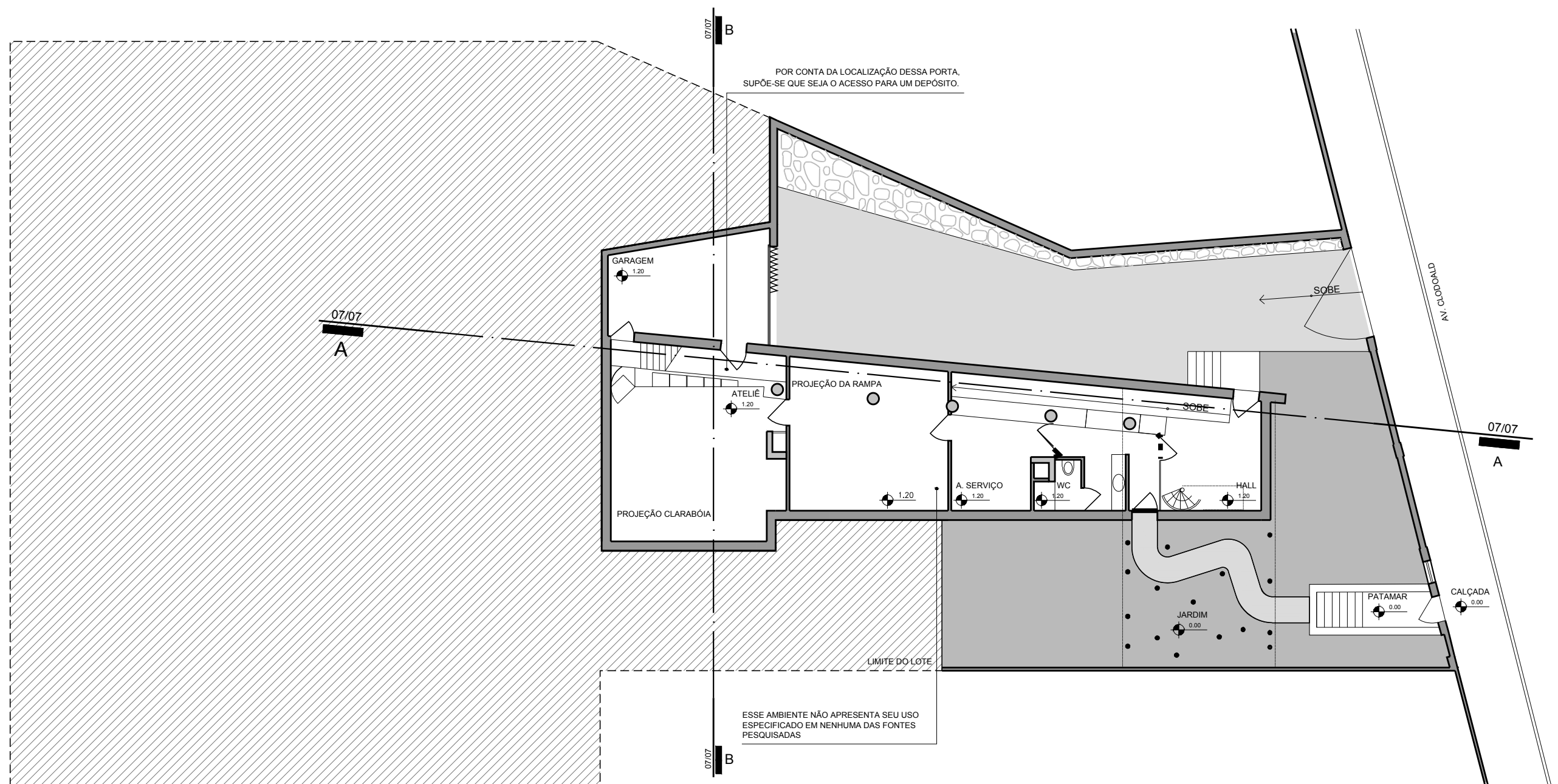
YASMIN PEREGRINO

PERÍODO: 2012.1

PROFESSOR: WYLNNA VIDAL

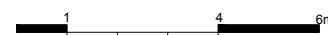
PRANCHA

02
 08



PROJETO: VILLA DALL'AVA
ARQUITETURA: REM KOOLHAAS
LOCAL: PARIS, FRANÇA
ANO: 1985 - 1991

PLANTA BAIXA - PAVIMENTO TÉRREO
ESCALA 1/150



HM+HC - LPPM - DA - UFPB

DISCIPLINA: H.A.U. IV

ALUNOS: ISABELA CAMPOS

RODRIGO ALCÂNTRA

YASMIN PEREGRINO

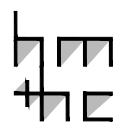
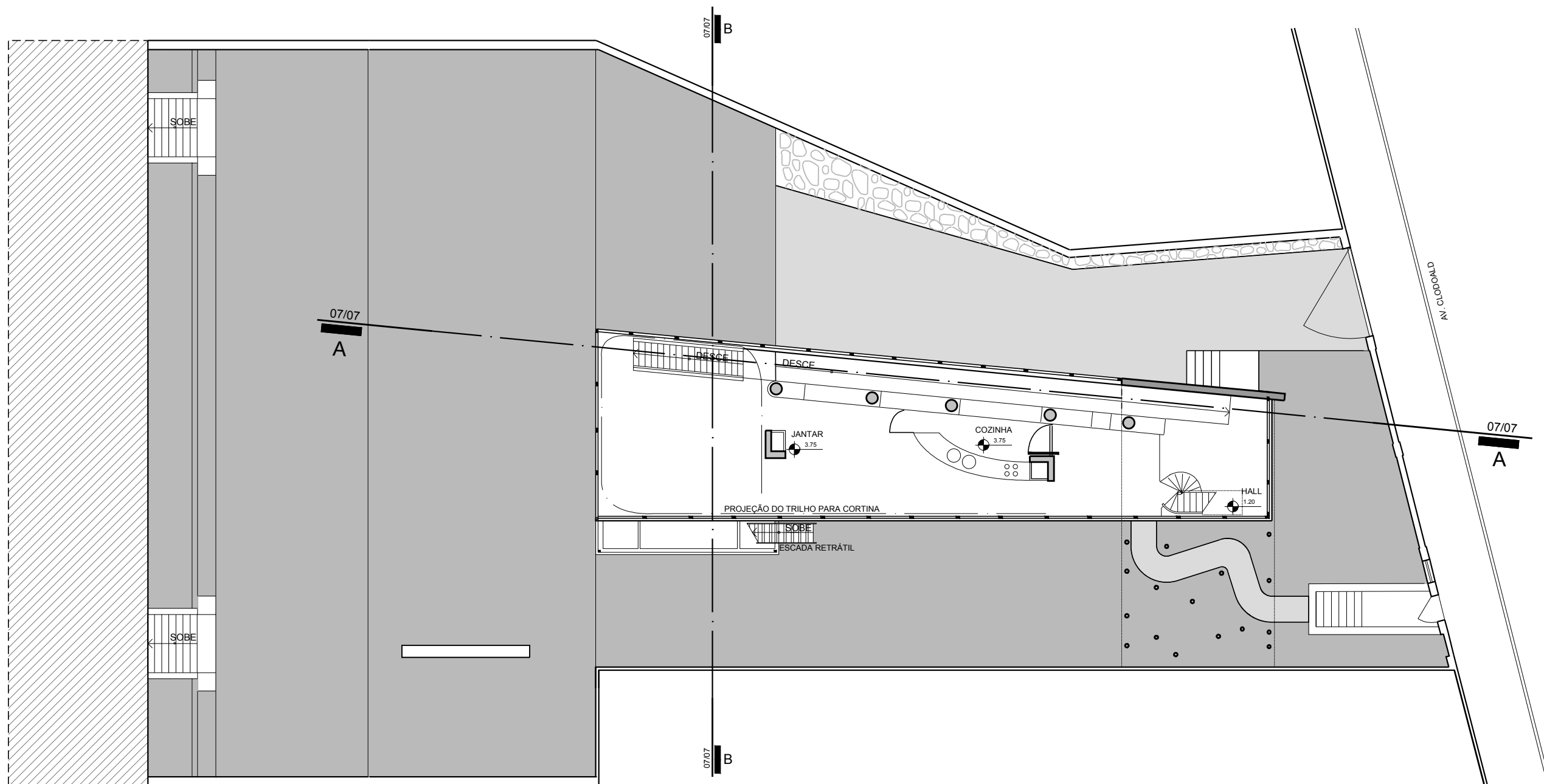
PERÍODO: 2012.1

PROFESSOR: WYLNNA VIDAL

PRANCHA

03

08



PROJETO: VILLA DALL'AVA
ARQUITETURA: REM KOOLHAAS
LOCAL: PARIS, FRANÇA
ANO: 1985 - 1991

PLANTA BAIXA - 1º PAVIMENTO
ESCALA 1/150



HM+HC - LPPM - DA - UFPB

DISCIPLINA: H.A.U. IV

ALUNOS: ISABELA CAMPOS
RODRIGO ALCÂNTRA

YASMIN PEREGRINO

PERÍODO: 2012.1

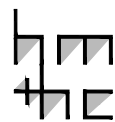
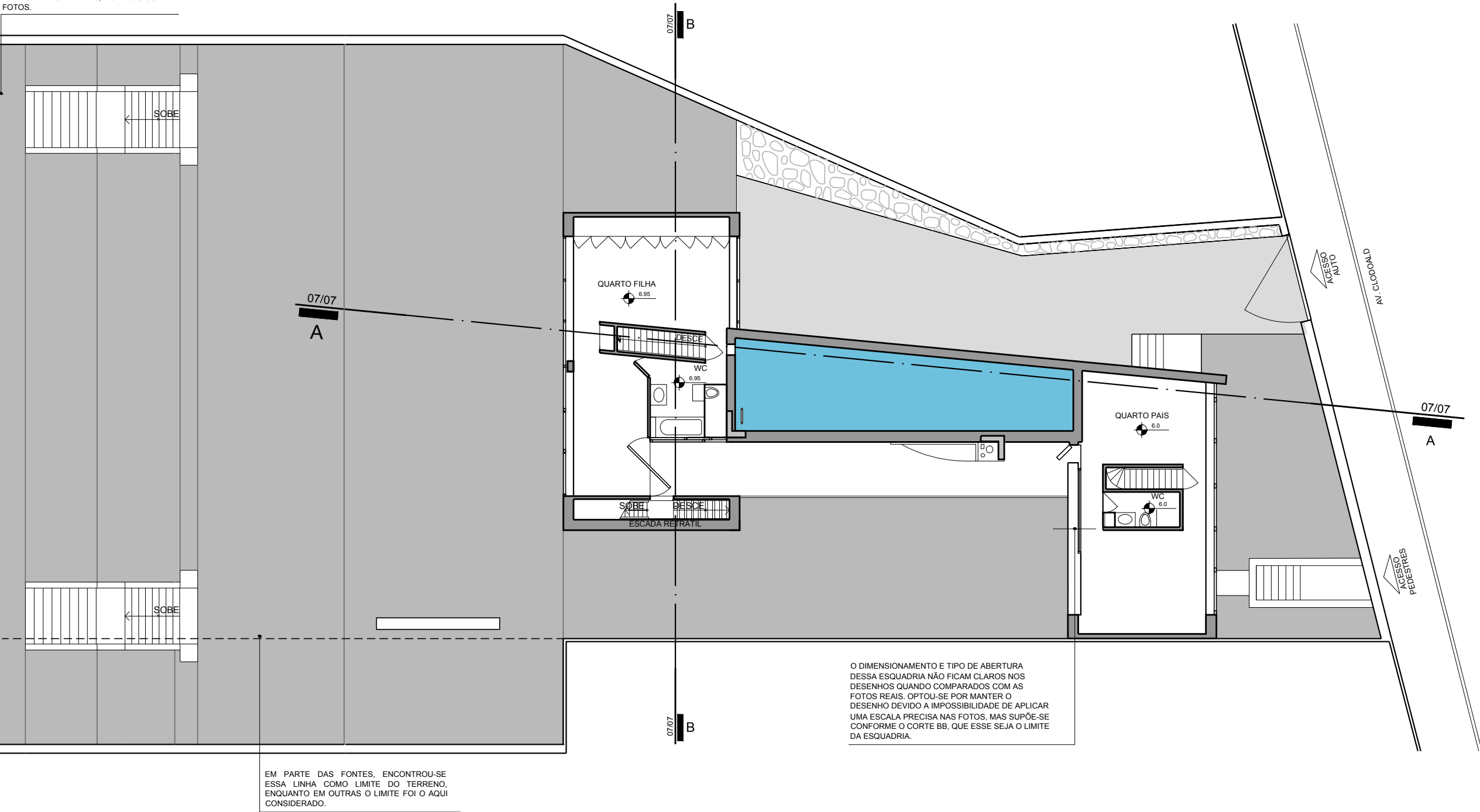
PROFESSOR: WYLNNA VIDAL

PRANCHA

04

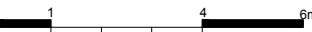
08

A CONFIGURAÇÃO E LOCALIZAÇÃO DO MURO DO LOTE NESTA FRENTE NÃO CONSTA EM NENHUMA DAS PLANTAS, MODELOS OU FOTOS.



PROJETO: VILLA DALL'AVA
ARQUITETURA: REM KOOLHAAS
LOCAL: PARIS, FRANÇA
ANO: 1985 - 1991

PLANTA BAIXA - 2º PAVIMENTO
ESCALA 1/150



HM+HC - LPPM - DA - UFPB

DISCIPLINA: H.A.U. IV

ALUNOS: ISABELA CAMPOS

RODRIGO ALCÂNTRA

YASMIN PEREGRINO

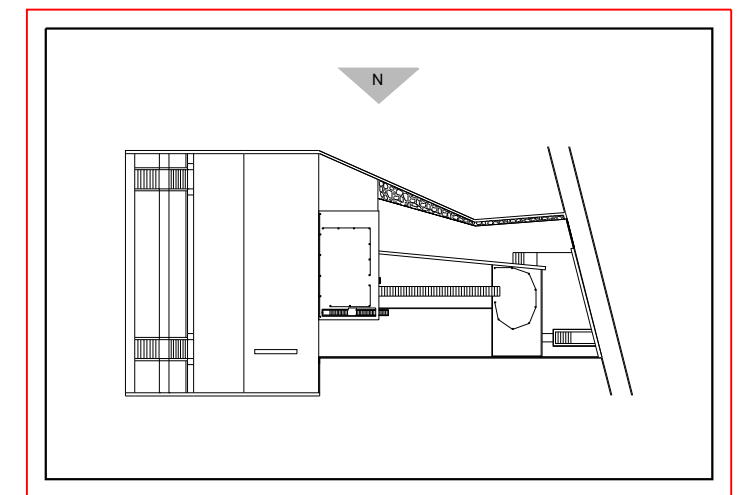
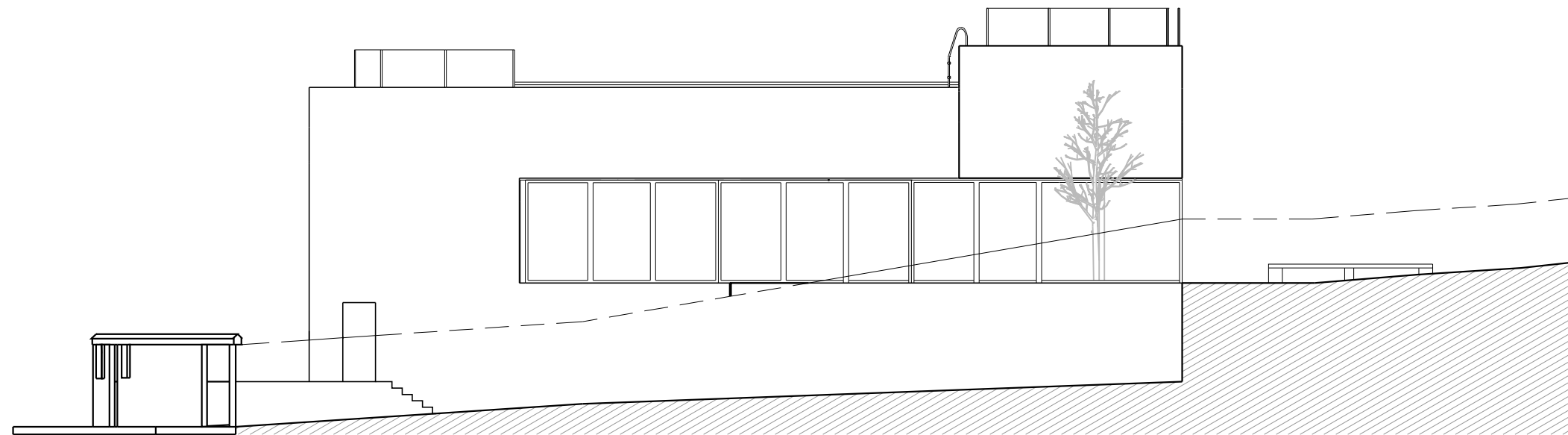
PERÍODO: 2012.1

PROFESSOR: WYLNNA VIDAL

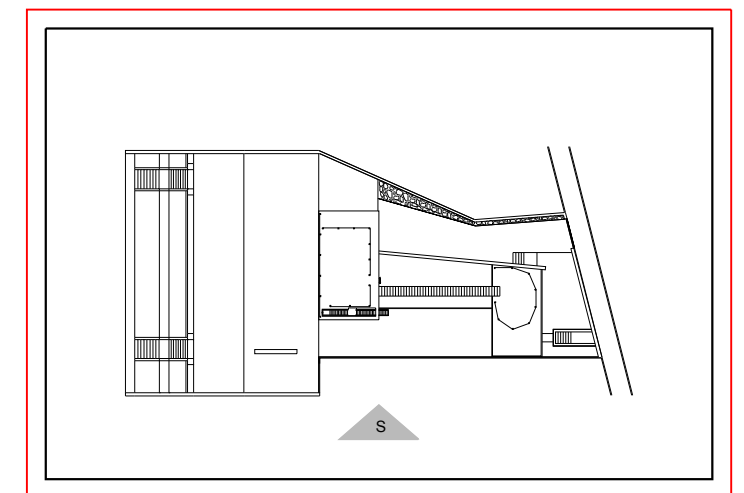
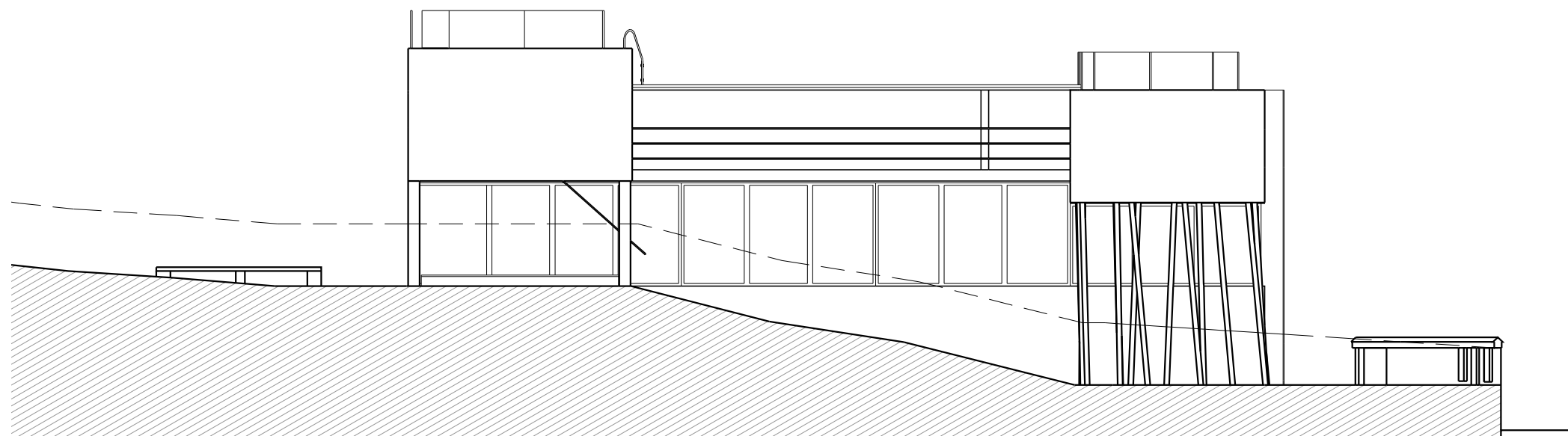
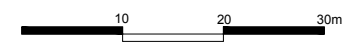
PRANCHA

05

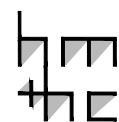
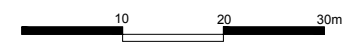
08



INDICAÇÃO FACHADA NORTE
ESCALA 1/750

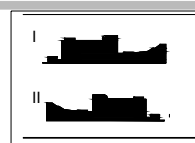


INDICAÇÃO FACHADA SUL
ESCALA 1/750



PROJETO: VILLA DALL'AVA
ARQUITETURA: REM KOOLHAAS
LOCAL: PARIS, FRANÇA
ANO: 1985 - 1991

I. FACHADA NORTE
ESCALA 1/150
II. FACHADA SUL
ESCALA 1/150
1 4 6m



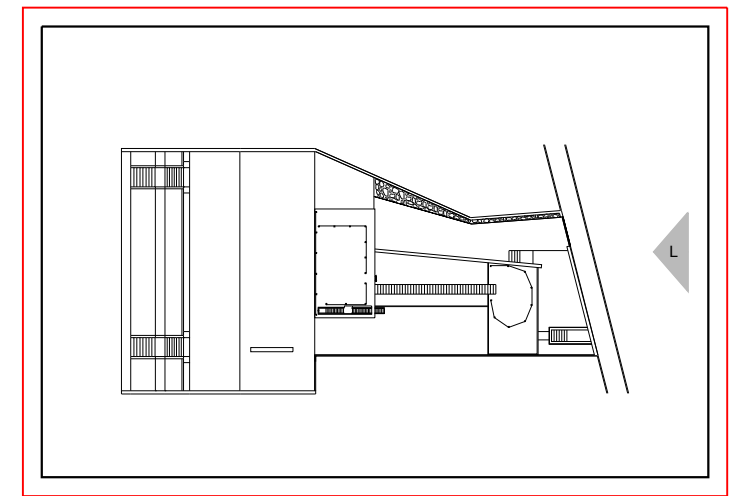
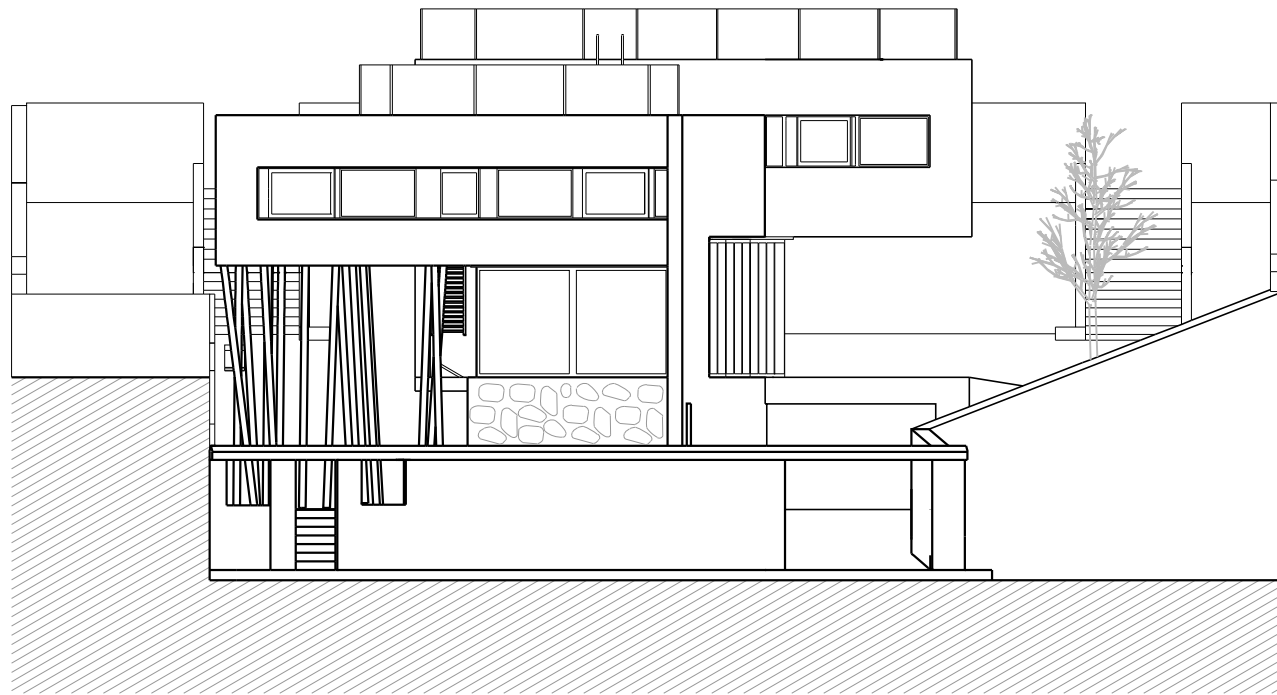
HM+HC - LPPM - DA - UFPB
DISCIPLINA: H.A.U. IV
ALUNOS: ISABELA CAMPOS
RODRIGO ALCÂNTRA

YASMIN PEREGRINO

PERÍODO: 2012.1
PROFESSOR: WYLNNA VIDAL

PRANCHA

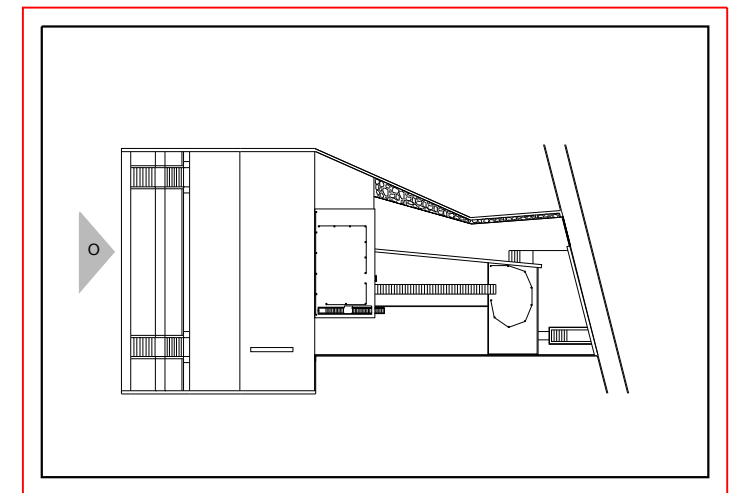
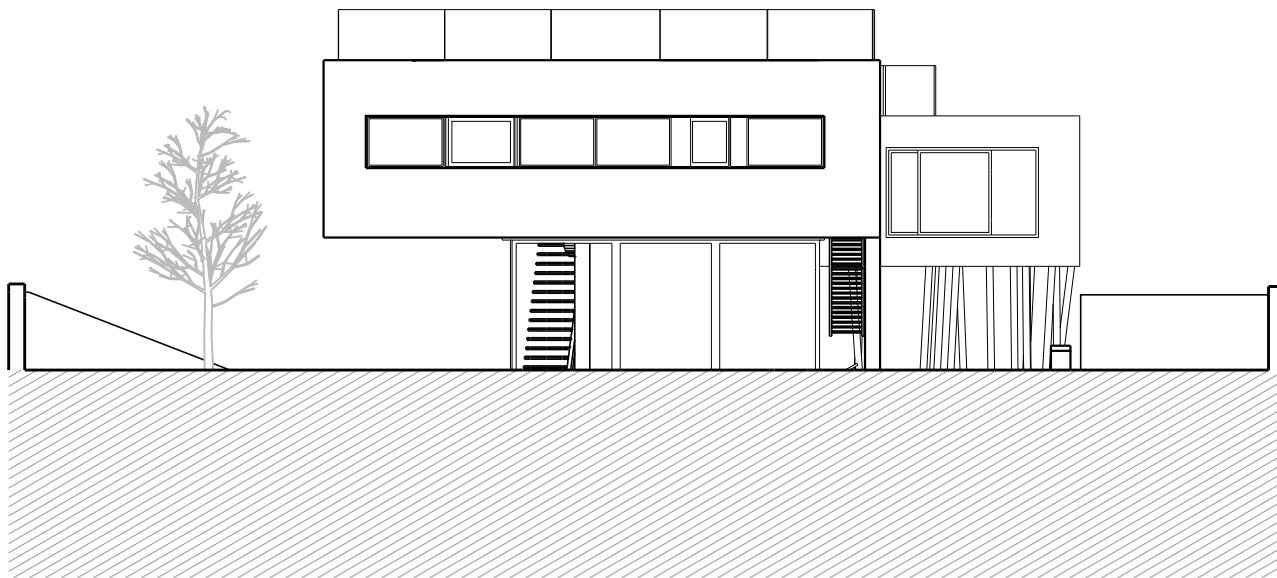
06
08



INDICAÇÃO FACHADA LESTE
ESCALA 1/750



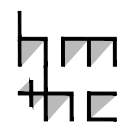
10 20 30m



INDICAÇÃO FACHADA OESTE
ESCALA 1/750

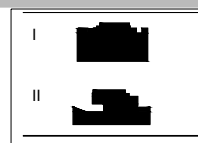


10 20 30m



PROJETO: VILLA DALL'AVA
ARQUITETURA: REM KOOLHAAS
LOCAL: PARIS, FRANÇA
ANO: 1985 - 1991

I. FACHADA LESTE
ESCALA 1/150
II. FACHADA OESTE
ESCALA 1/150
1 4 6m



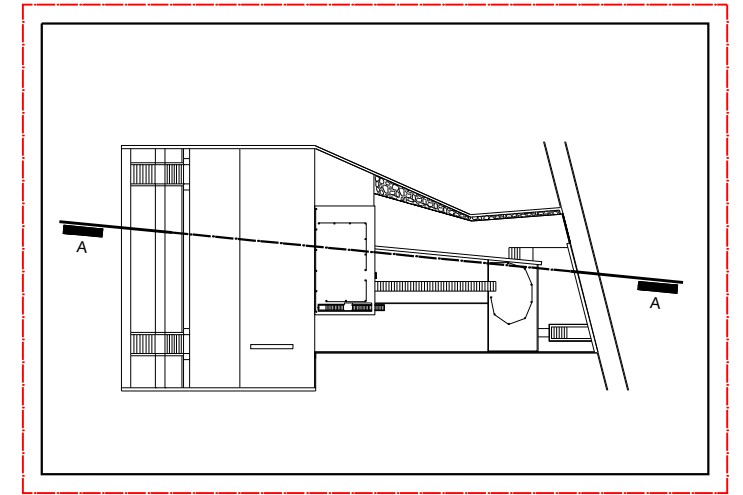
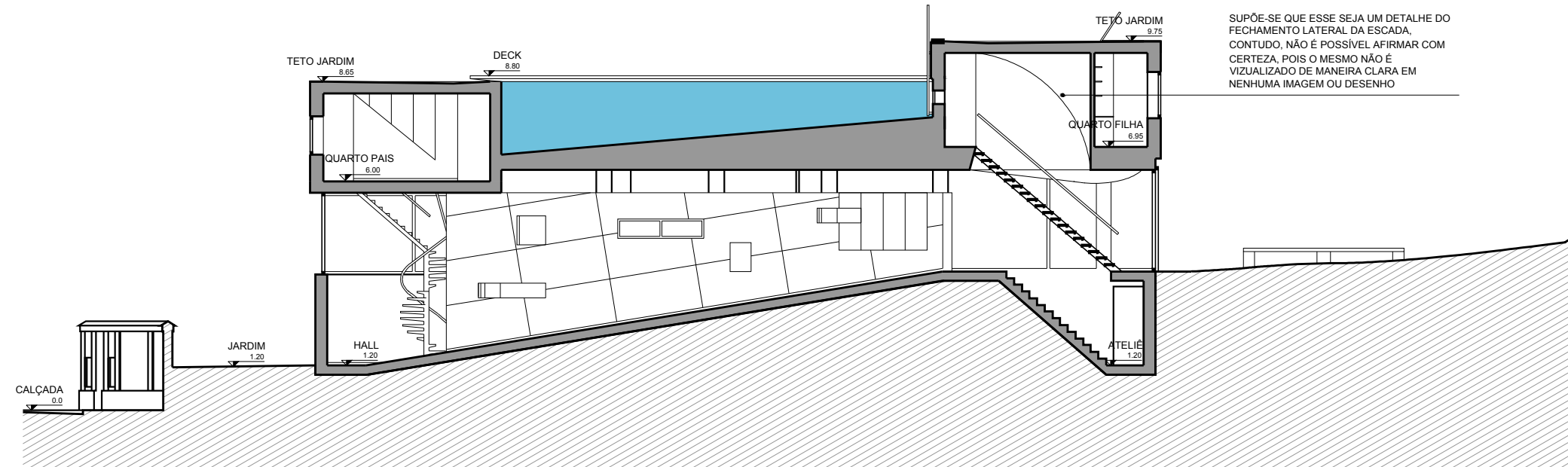
HM+HC - LPPM - DA - UFPB
DISCIPLINA: H.A.U. IV
ALUNOS: ISABELA CAMPOS
RODRIGO ALCÂNTRA

YASMIN PEREGRINO

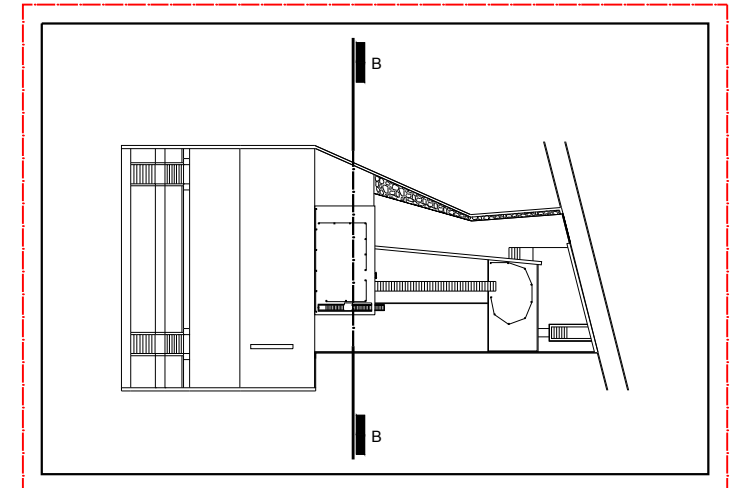
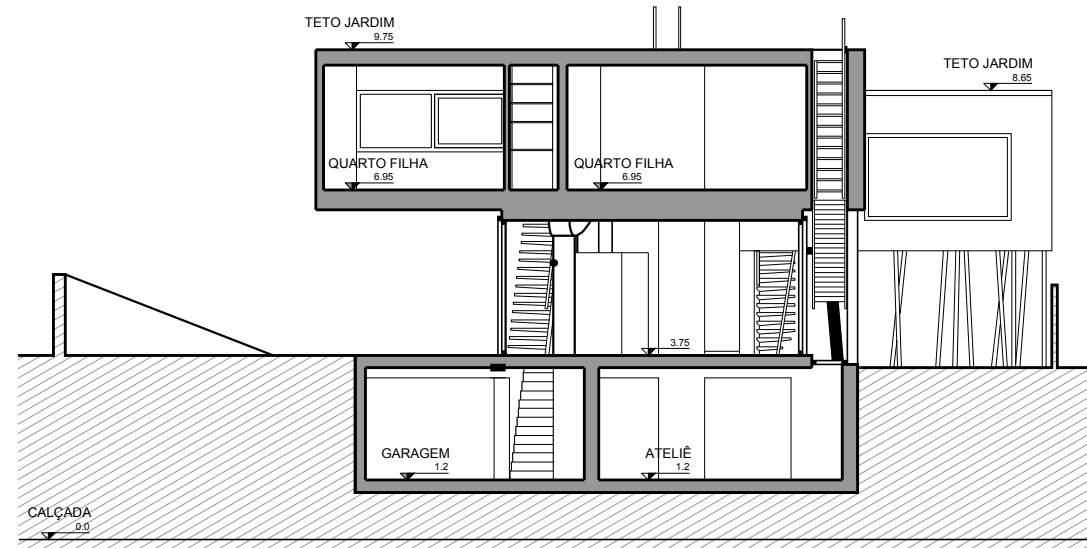
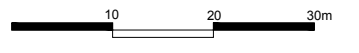
PERÍODO: 2012.1
PROFESSOR: WYLNNA VIDAL

PRANCHA

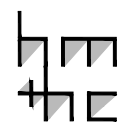
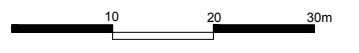
07
08



INDICAÇÃO CORTE AA
ESCALA 1/750

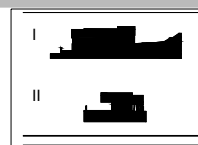


INDICAÇÃO CORTE BB
ESCALA 1/750



PROJETO: VILLA DALL'AVA
ARQUITETURA: REM KOOLHAAS
LOCAL: PARIS, FRANÇA
ANO: 1985 - 1991

I. CORTE AA
ESCALA 1/150
II. CORTE AA
ESCALA 1/150
1 4 6m



HM+HC - LPPM - DA - UFPB
DISCIPLINA: H.A.U. IV
ALUNOS: ISABELA CAMPOS
RODRIGO ALCÂNTRA

YASMIN PEREGRINO

PERÍODO: 2012.1
PROFESSOR: WYLNNA VIDAL

PRANCHA

08
08