

OCEANO ATLÂNTICO

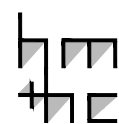
PRAIA DO CABO BRANCO

AVENIDA CABO BRANCO

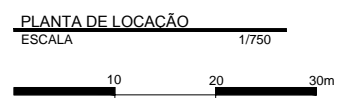
RUA EDVALDO B. CAVALCANTI PINHO

FALÉSIA

RUA MAJOR JOSÉ EUGÊNIO LINS



PROJETO: RESIDÊNCIA MÚCIO ANTÔNIO SOUTO SÁTIRO  
 ARQUITETURA: MÁRIO DI LÁSCIO  
 LOCAL: JOÃO PESSOA - PB  
 ANO: 1979

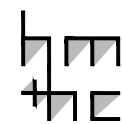
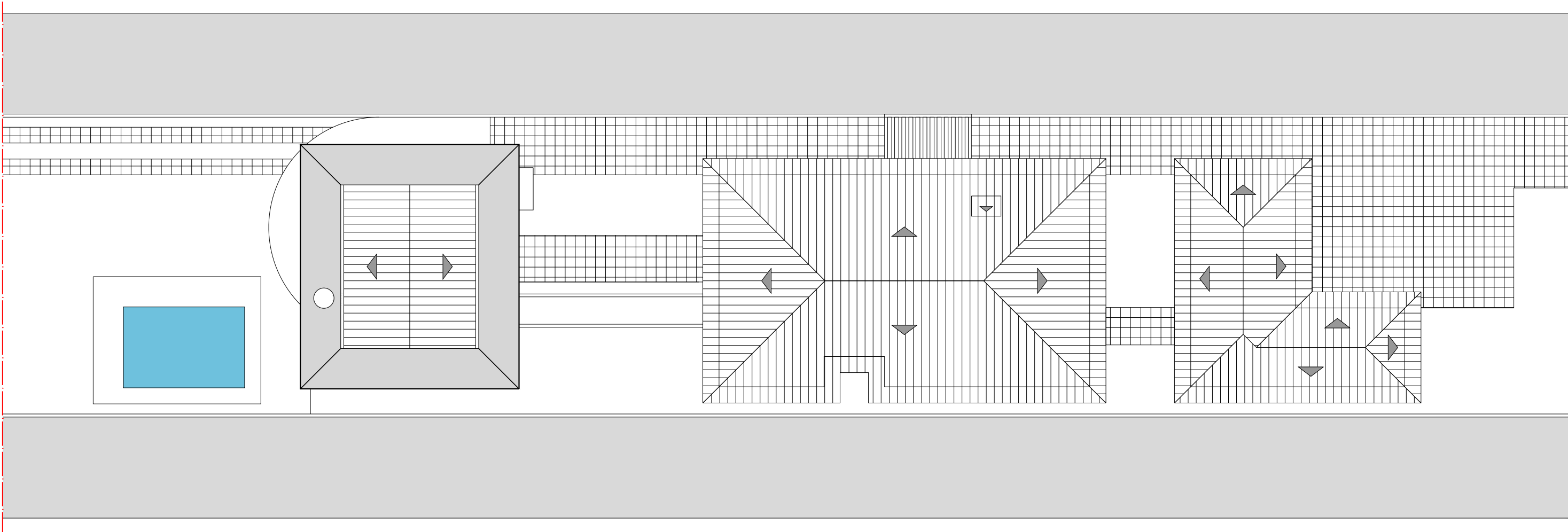


HM+HC - LPPM - DA - UFPB  
 DISCIPLINA: ESTÁGIO SUPERVISIONADO V  
 ALUNOS: DAVI PEREIRA LUCENA  
 FELIPE ALBUQUERQUE MIRANDA

PERÍODO: 2011.2  
 PROFESSOR: MARCIO COTRIM CUNHA

PRANCHA

01  
 09



PROJETO: RESIDÊNCIA MÚCIO ANTÔNIO SOUTO SÁTIRO  
ARQUITETURA: MÁRIO DI LÁSCIO  
LOCAL: JOÃO PESSOA - PB  
ANO: 1979

PLANTA DE COBERTA  
ESCALA 1/200



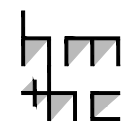
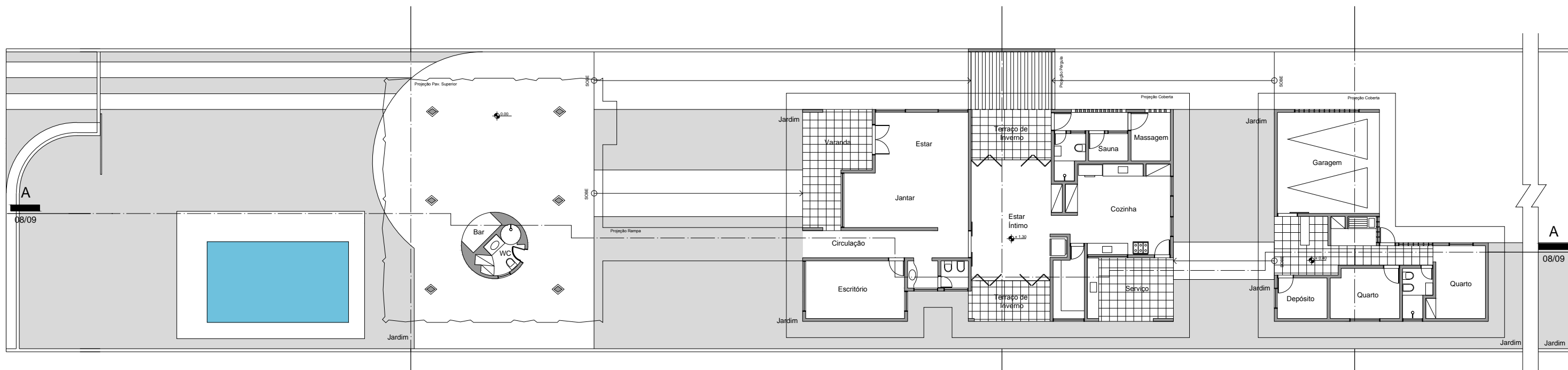
HM+HC - LPPM - DA - UFPB

DISCIPLINA: ESTÁGIO SUPERVISIONADO V  
ALUNOS: DAVI PEREIRA LUCENA  
FELIPE ALBUQUERQUE MIRANDA

PERÍODO: 2011.2  
PROFESSOR: MARCIO COTRIM CUNHA

PRANCHA

02  
09



PROJETO: RESIDÊNCIA MÚCIO ANTÔNIO SOUTO SÁTIRO  
 ARQUITETURA: MÁRIO DI LÁSCIO  
 LOCAL: JOÃO PESSOA - PB  
 ANO: 1979

PLANTA BAIXA - TÉRREO  
 ESCALA 1/200



HM+HC - LPPM - DA - UFPB

DISCIPLINA: ESTÁGIO SUPERVISIONADO V

ALUNOS: DAVI PEREIRA LUCENA

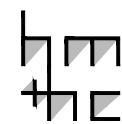
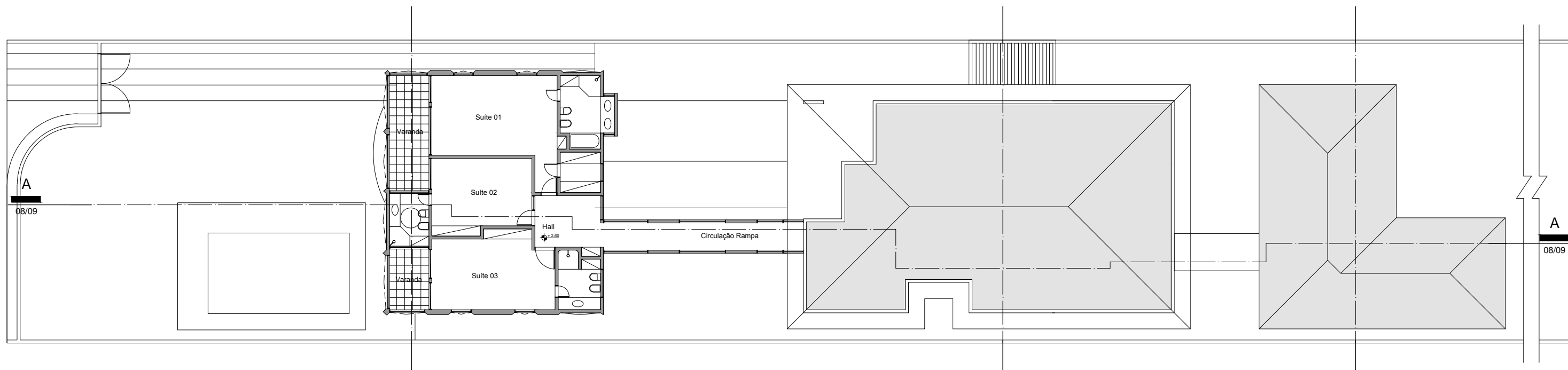
FELIPE ALBUQUERQUE MIRANDA

PERÍODO: 2011.2

PROFESSOR: MARCIO COTRIM CUNHA

PRANCHA

03  
09



PROJETO: RESIDÊNCIA MÚCIO ANTÔNIO SOUTO SÁTIRO  
 ARQUITETURA: MÁRIO DI LÁSCIO  
 LOCAL: JOÃO PESSOA - PB  
 ANO: 1979

PLANTA BAIXA - PAV. SUPERIOR  
 ESCALA 1/200



HM+HC - LPPM - DA - UFPB

DISCIPLINA: ESTÁGIO SUPERVISIONADO V

ALUNOS: DAVI PEREIRA LUCENA

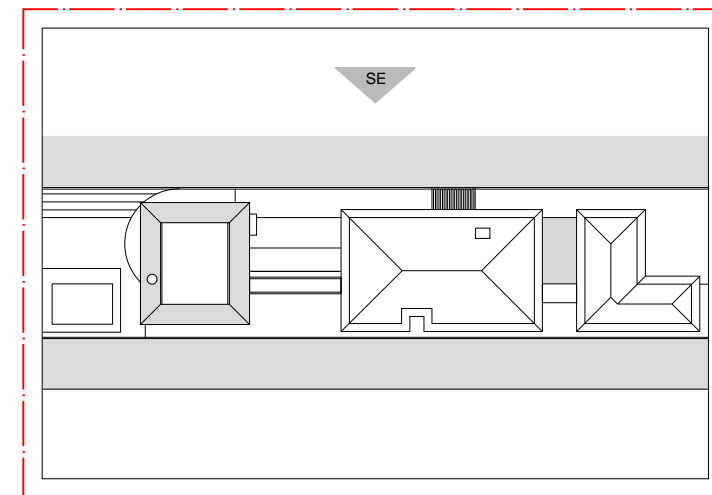
FELIPE ALBUQUERQUE MIRANDA

PERÍODO: 2011.2

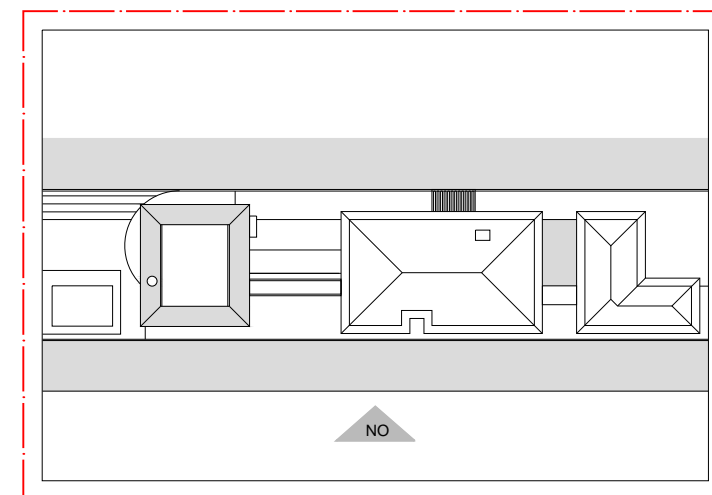
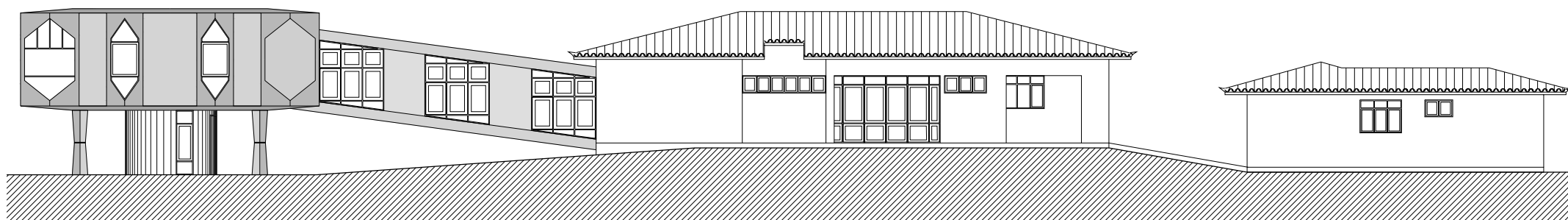
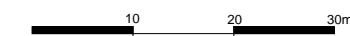
PROFESSOR: MARCIO COTRIM CUNHA

PRANCHA

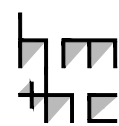
04  
09



INDICAÇÃO FACHADA SUDESTE  
ESCALA 1/750

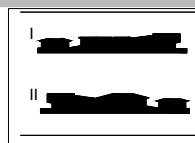


INDICAÇÃO FACHADA NOROESTE  
ESCALA 1/750



PROJETO: RESIDÊNCIA MÚCIO ANTÔNIO SOUTO SÁTIRO  
ARQUITETURA: MÁRIO DI LÁSCIO  
LOCAL: JOÃO PESSOA - PB  
ANO: 1979

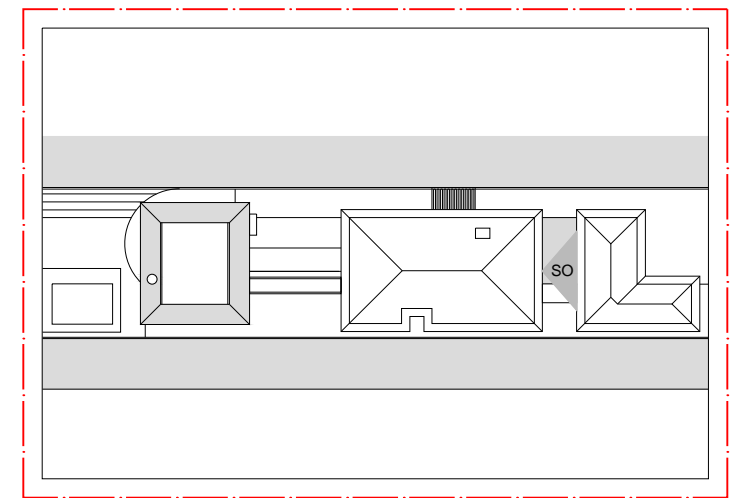
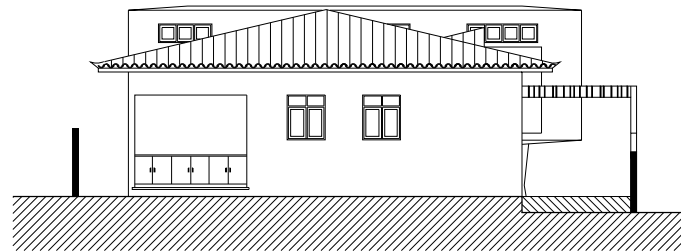
I. FACHADA SUDESTE  
ESCALA 1/200  
II. FACHADA NOROESTE  
ESCALA 1/200



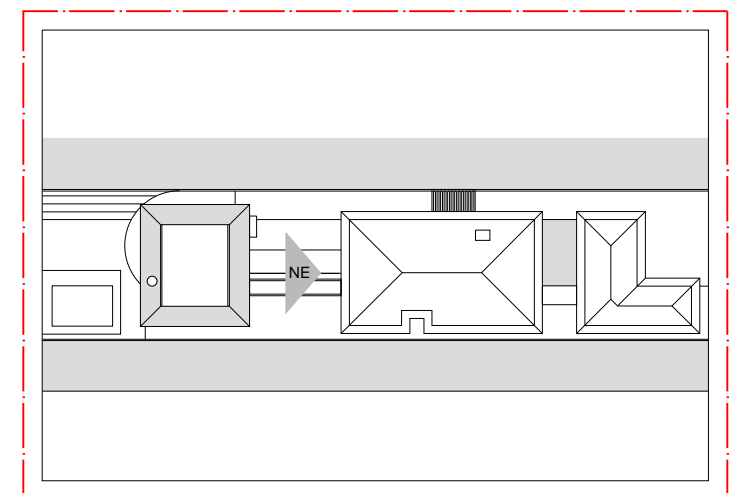
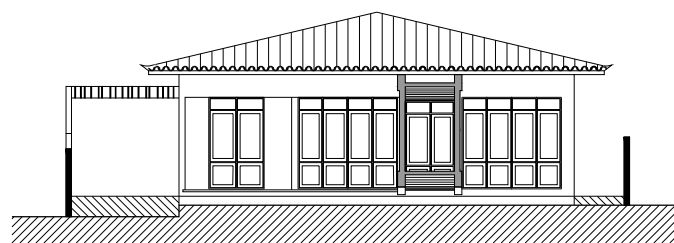
HM+HC - LPPM - DA - UFPB  
DISCIPLINA: ESTÁGIO SUPERVISIONADO V  
ALUNOS: DAVI PEREIRA LUCENA  
FELIPE ALBUQUERQUE MIRANDA

PERÍODO: 2011.2  
PROFESSOR: MARCIO COTRIM CUNHA

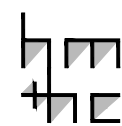
PRANCHA  
05  
09



INDICAÇÃO FACHADA SUDOESTE  
ESCALA 1/750

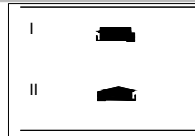


INDICAÇÃO FACHADA NORDESTE  
ESCALA 1/750



PROJETO: RESIDÊNCIA MÚCIO ANTÔNIO SOUTO SÁTIRO  
ARQUITETURA: MÁRIO DI LÁSCIO  
LOCAL: JOÃO PESSOA - PB  
ANO: 1979

I. FACHADA SUDOESTE  
ESCALA 1/200  
II. FACHADA NORDESTE  
ESCALA 1/200

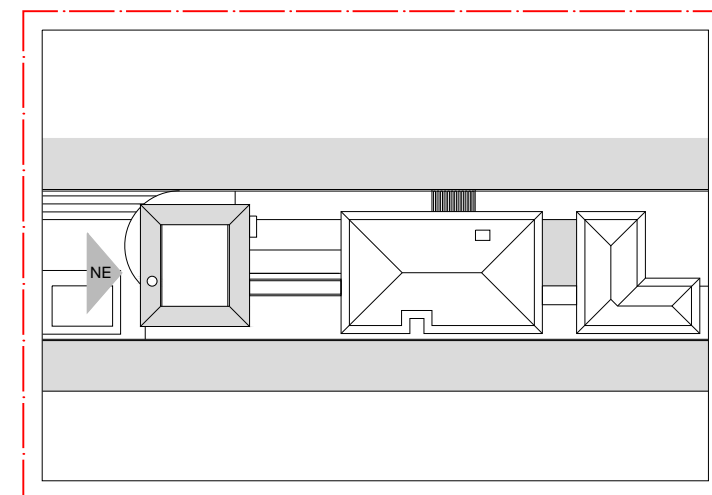
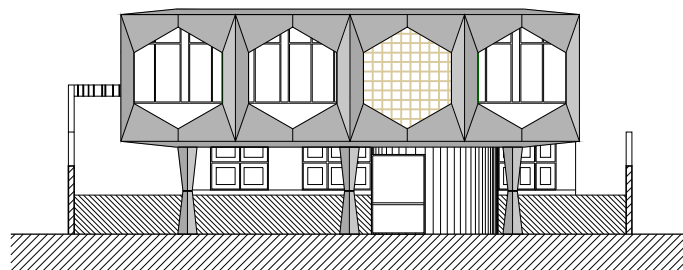


HM+HC - LPPM - DA - UFPB  
DISCIPLINA: ESTÁGIO SUPERVISIONADO V  
ALUNOS: DAVI PEREIRA LUCENA  
FELIPE ALBUQUERQUE MIRANDA

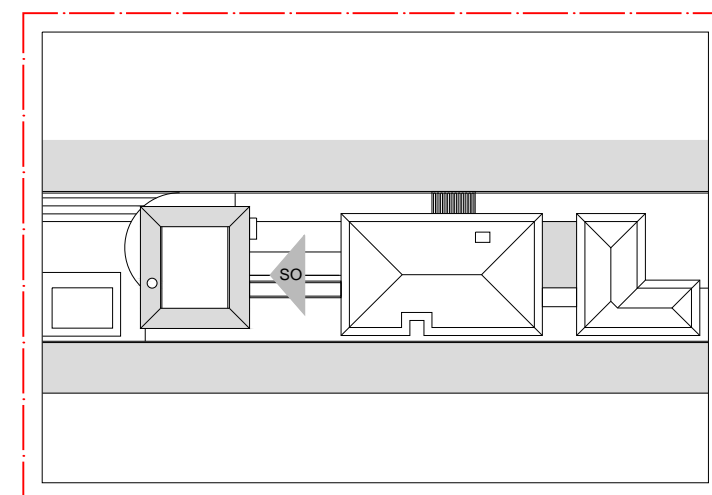
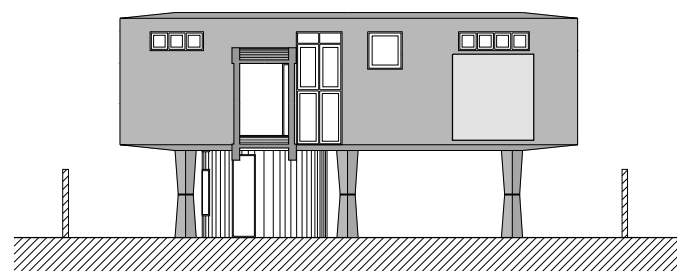
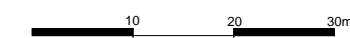
PERÍODO: 2011.2  
PROFESSOR: MARCIO COTRIM CUNHA

PRANCHA

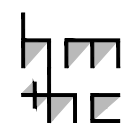
06  
09



INDICAÇÃO FACHADA NORDESTE  
ESCALA 1/750

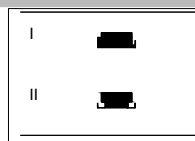


INDICAÇÃO FACHADA SUDOESTE  
ESCALA 1/750



PROJETO: RESIDÊNCIA MÚCIO ANTÔNIO SOUTO SÁTIRO  
ARQUITETURA: MÁRIO DI LÁSCIO  
LOCAL: JOÃO PESSOA - PB  
ANO: 1979

I. FACHADA NORDESTE  
ESCALA 1/200  
II. FACHADA SUDOESTE  
ESCALA 1/200

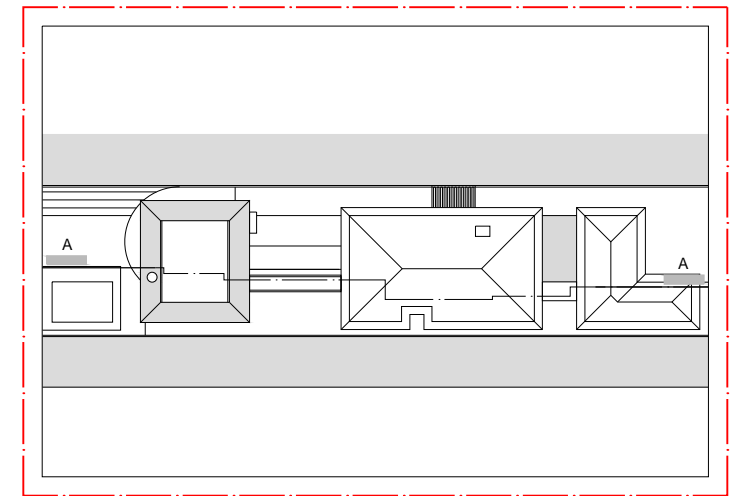
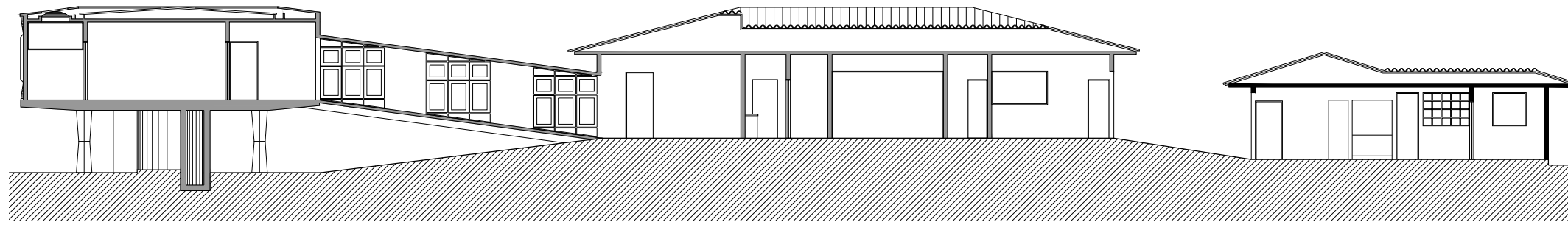


HM+HC - LPPM - DA - UFPB  
DISCIPLINA: ESTÁGIO SUPERVISIONADO V  
ALUNOS: DAVI PEREIRA LUCENA  
FELIPE ALBUQUERQUE MIRANDA

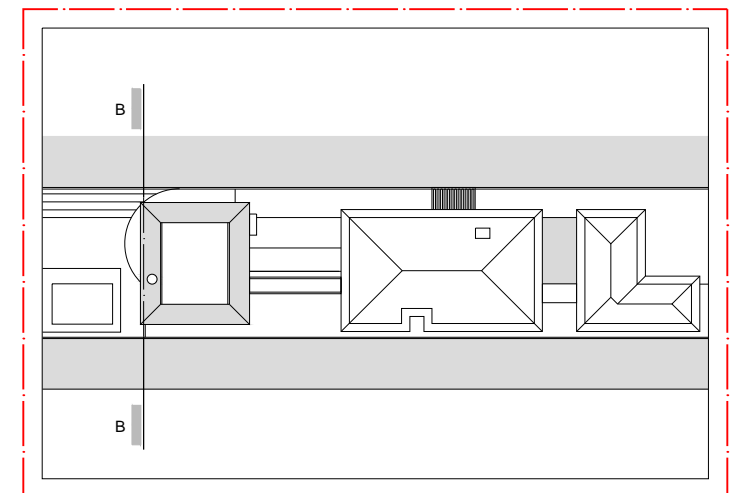
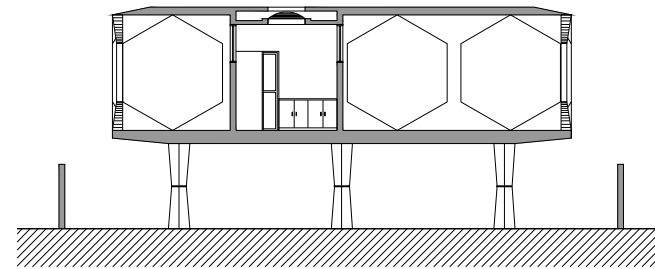
PERÍODO: 2011.2  
PROFESSOR: MARCIO COTRIM CUNHA

PRANCHA

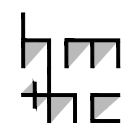
07  
09



INDICAÇÃO CORTE AA  
ESCALA 1/750

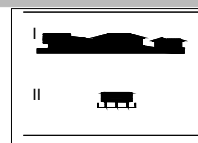


INDICAÇÃO CORTE AA  
ESCALA 1/750



PROJETO: RESIDÊNCIA MÚCIO ANTÔNIO SOUTO SÁTIRO  
ARQUITETURA: MÁRIO DI LÁSCIO  
LOCAL: JOÃO PESSOA - PB  
ANO: 1979

I. CORTE AA  
ESCALA 1/200  
II. CORTE BB  
ESCALA 1/200



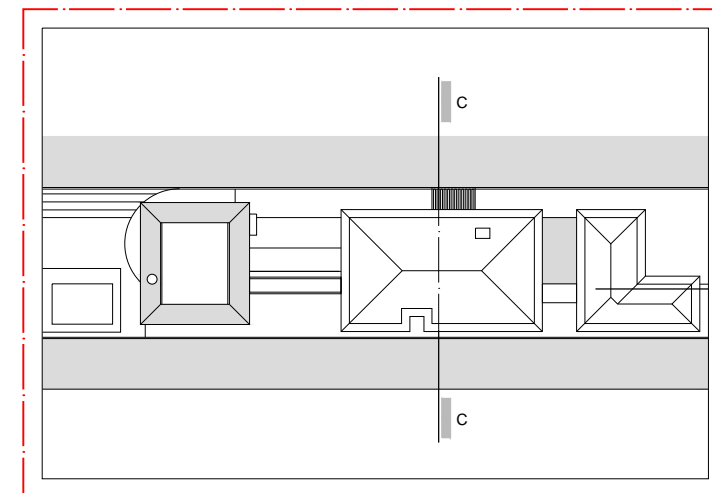
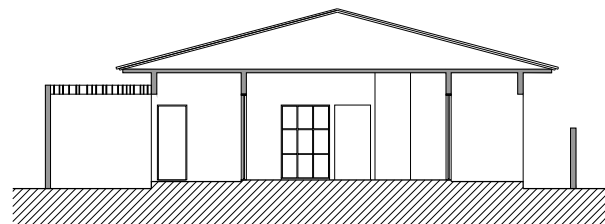
HM+HC - LPPM - DA - UFPB  
DISCIPLINA: ESTÁGIO SUPERVISIONADO V  
ALUNOS: DAVI PEREIRA LUCENA  
FELIPE ALBUQUERQUE MIRANDA

PERÍODO: 2011.2  
PROFESSOR: MARCIO COTRIM CUNHA

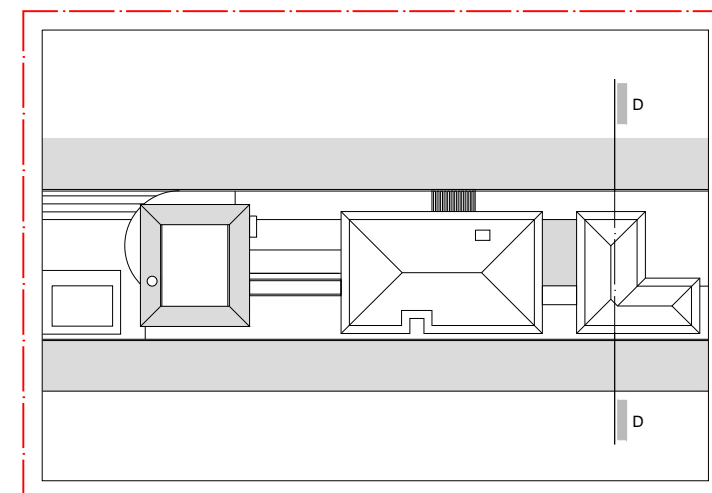
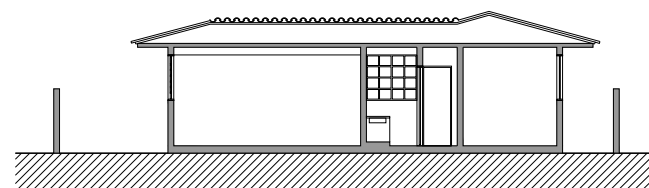
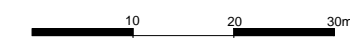
PRANCHA

08  
09

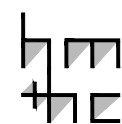




INDICAÇÃO CORTE CC  
ESCALA 1/750

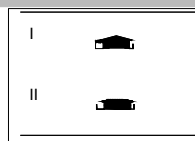


INDICAÇÃO CORTE DD  
ESCALA 1/750



PROJETO: RESIDÊNCIA MÚCIO ANTÔNIO SOUTO SÁTIRO  
ARQUITETURA: MÁRIO DI LÁSCIO  
LOCAL: JOÃO PESSOA - PB  
ANO: 1979

I. CORTE CC  
ESCALA 1/200  
II. CORTE DD  
ESCALA 1/200



HM+HC - LPPM - DA - UFPB  
DISCIPLINA: ESTÁGIO SUPERVISIONADO V  
ALUNOS: DAVI PEREIRA LUCENA  
FELIPE ALBUQUERQUE MIRANDA

PERÍODO: 2011.2  
PROFESSOR: MARCIO COTRIM CUNHA

PRANCHA

09  
09