

PROJETO: RES. ENG. JOÃO CELIDÔNIO G. REIS
 ARQUITETURA: VILANOVA ARTIGAS
 LOCAL: SÃO PAULO - SP
 ANO: 1977

PLANTA DE LOCAÇÃO E COBERTA
 ESCALA 1/150



HM+HC - LPPM - DA - UFPB

DISCIPLINA: H.A.U. III

ALUNOS: ÉRIKA FIGUEIRÊDO
 ISABELA CAMPOS

JAIME GALDINO
 KIARA DANTAS

YASMIN PEREGRINO

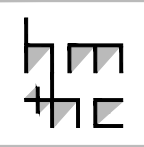
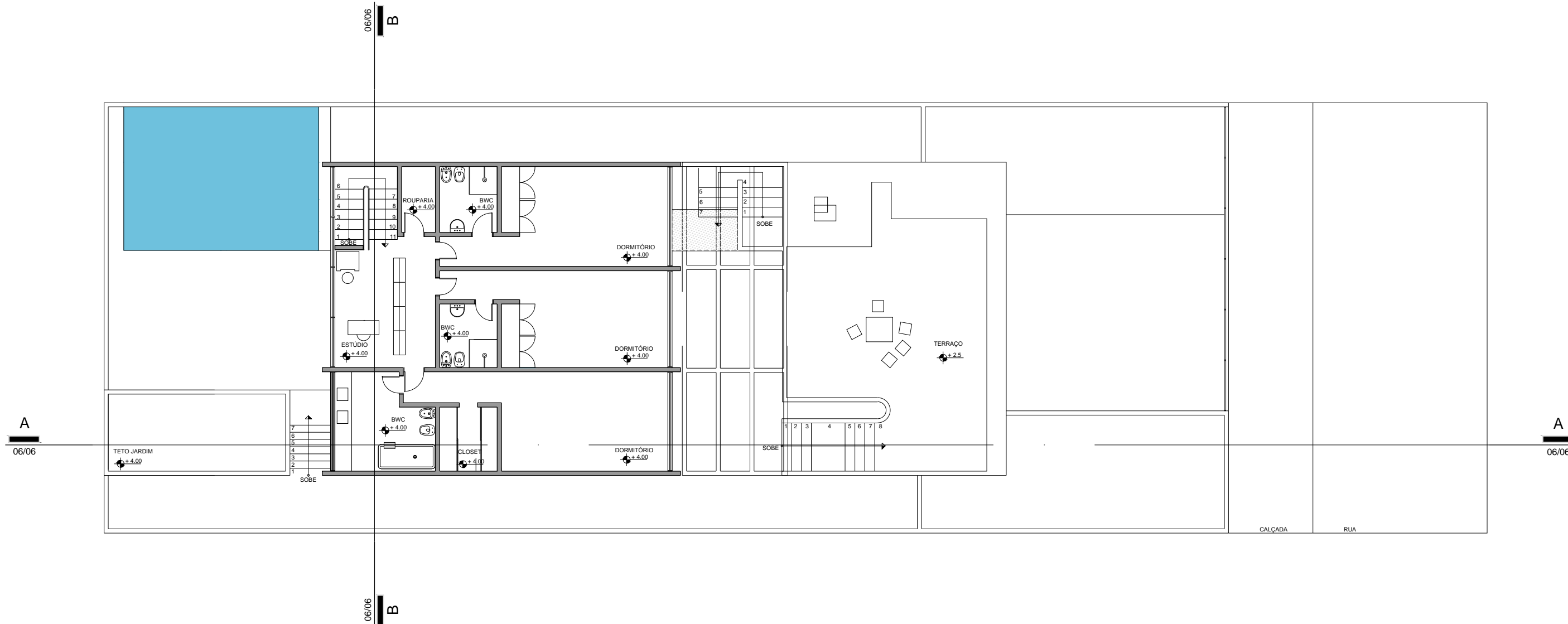
PERÍODO: 2011.2

PROFESSOR: MARCIO COTRIM CUNHA

PRANCHA

01

06



PROJETO: RES. ENG. JOÃO CELIDÔNIO G. REIS
 ARQUITETURA: VILANOVA ARTIGAS
 LOCAL: SÃO PAULO - SP
 ANO: 1977

PLANTA BAIXA - PAV. SUPERIOR
 ESCALA: 1/150

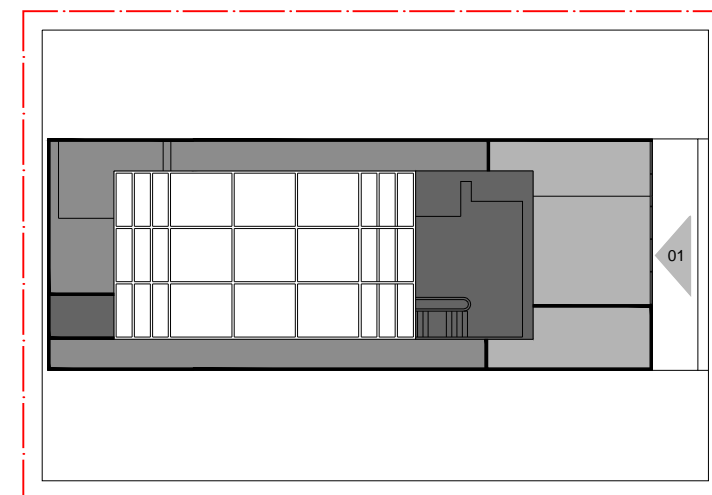
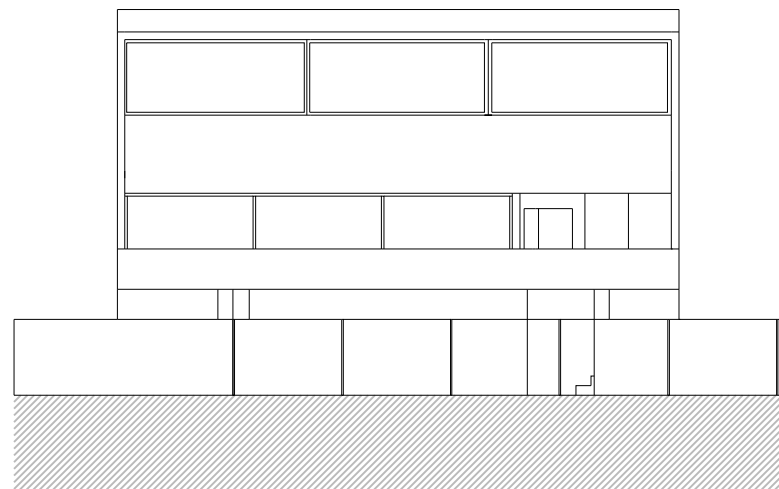
HM+HC - LPPM - DA - UFPB
 DISCIPLINA: H.A.U. III
 ALUNOS: ÉRIKA FIGUEIRÊDO
 ISABELA CAMPOS

JAIME GALDINO
 KIARA DANTAS

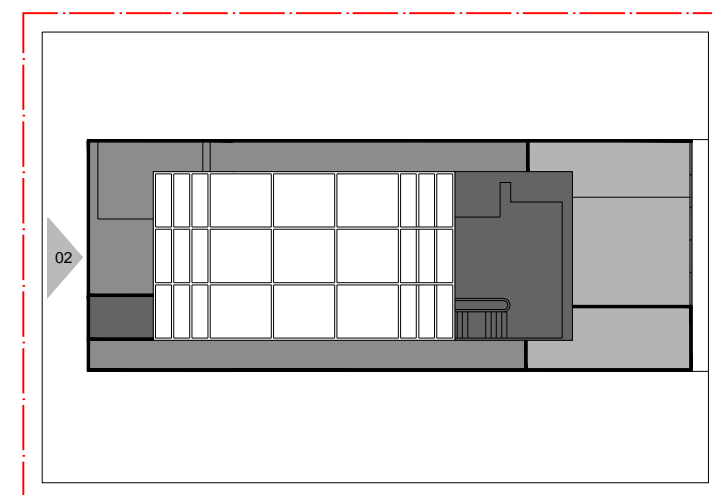
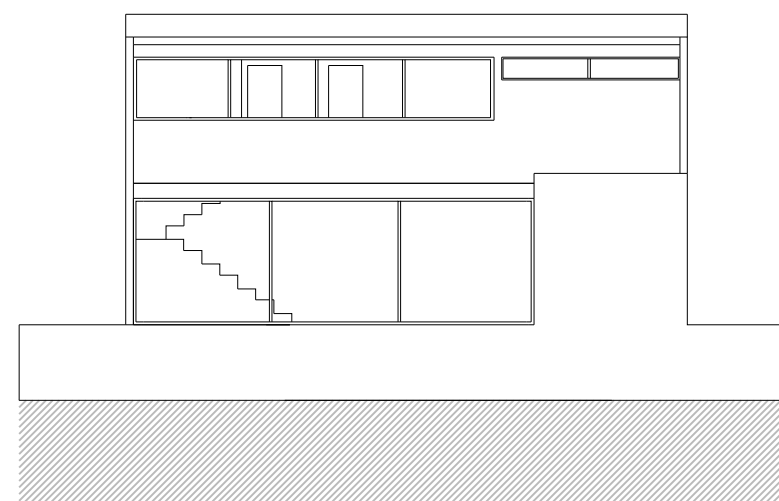
YASMIN PEREGRINO

PERÍODO: 2011.2
 PROFESSOR: MARCIO COTRIM CUNHA

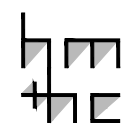
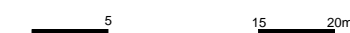
PRANCHA
03
06



INDICAÇÃO FACHADA 01
ESCALA 1/500

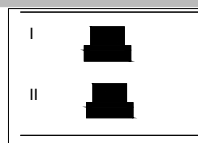


INDICAÇÃO FACHADA 02
ESCALA 1/500



PROJETO: RES. ENG. JOÃO CELIDÔNIO G. REIS
ARQUITETURA: VILANOVA ARTIGAS
LOCAL: SÃO PAULO - SP
ANO: 1977

I. FACHADA 01
ESCALA 1/150
II. FACHADA 02
ESCALA 1/150



HM+HC - LPPM - DA - UFPB

DISCIPLINA: H.A.U. III
ALUNOS: ÉRIKA FIGUEIRÊDO
ISABELA CAMPOS

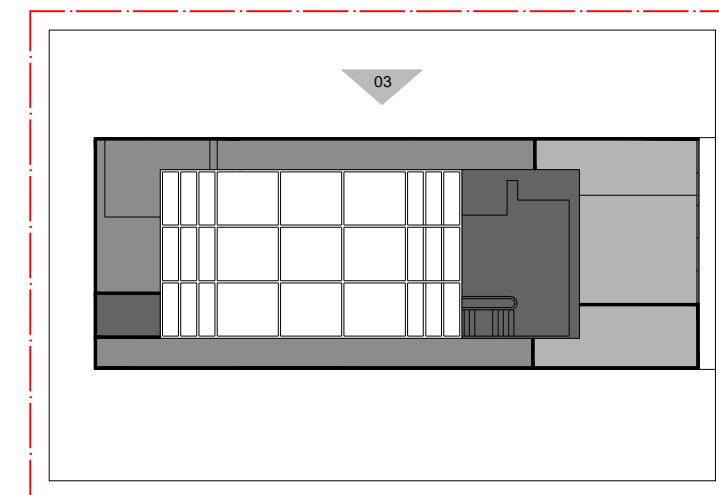
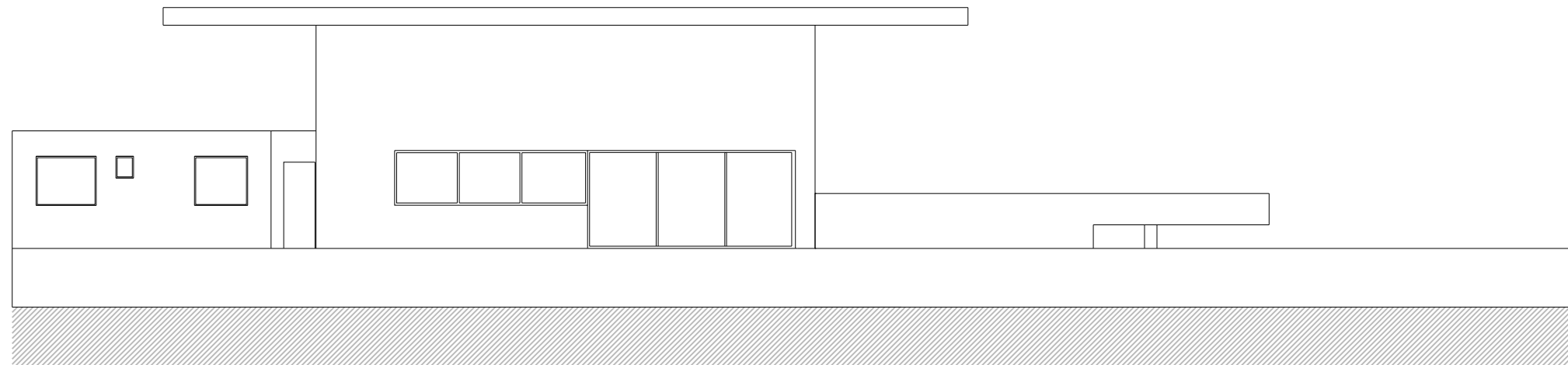
JAIME GALDINO
KIARA DANTAS

YASMIN PEREGRINO

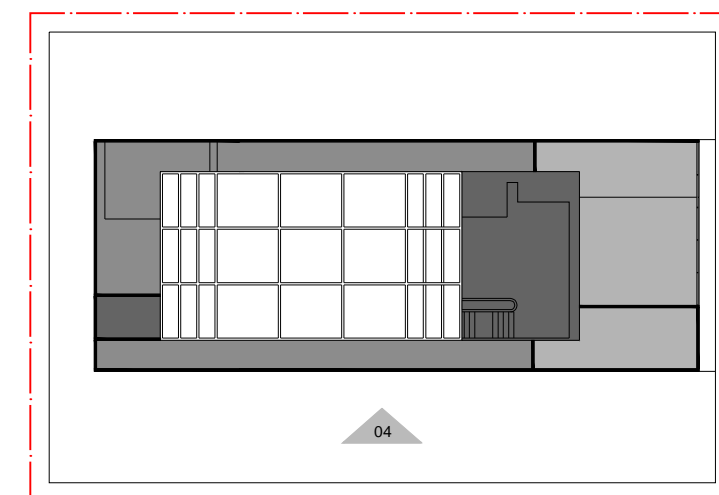
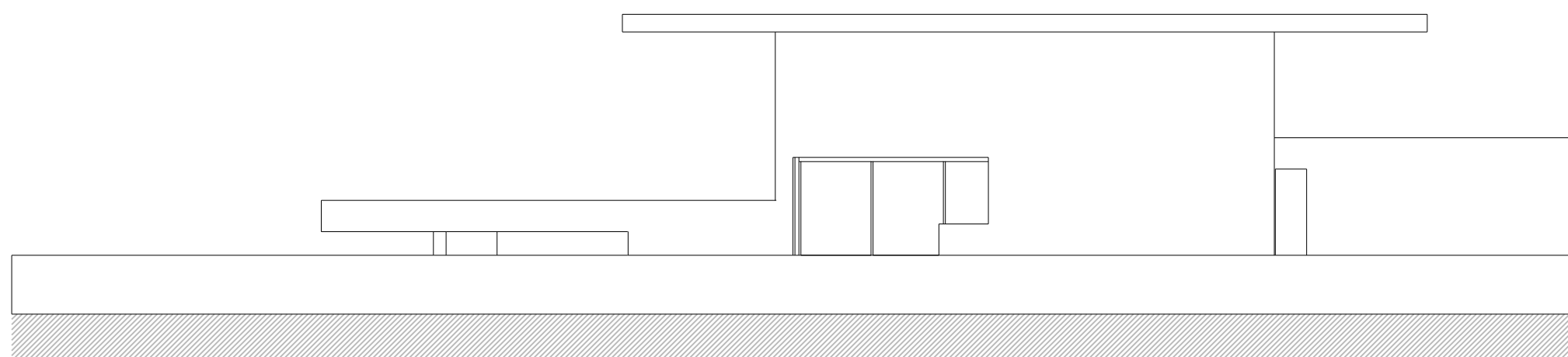
PERÍODO: 2011.2
PROFESSOR: MARCIO COTRIM CUNHA

PRANCHA

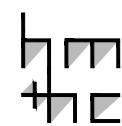
04
06



INDICAÇÃO FACHADA 03
ESCALA 1/500

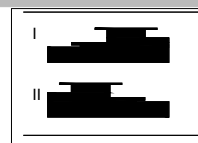


INDICAÇÃO FACHADA 04
ESCALA 1/500



PROJETO: RES. ENG. JOÃO CELIDÔNIO G. REIS
ARQUITETURA: VILANOVA ARTIGAS
LOCAL: SÃO PAULO - SP
ANO: 1977

I. FACHADA 03
ESCALA 1/150
II. FACHADA 04
ESCALA 1/150



HM+HC - LPPM - DA - UFPB

DISCIPLINA: H.A.U. III

ALUNOS: ÉRIKA FIGUEIRÊDO
ISABELA CAMPOS

JAIME GALDINO
KIARA DANTAS

YASMIN PEREGRINO

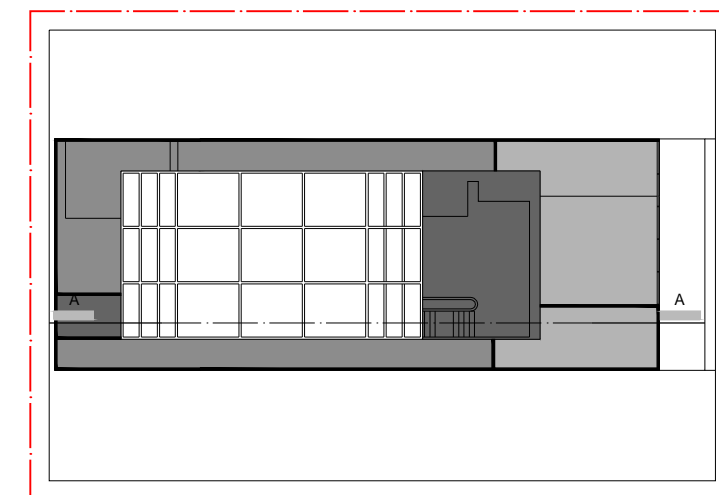
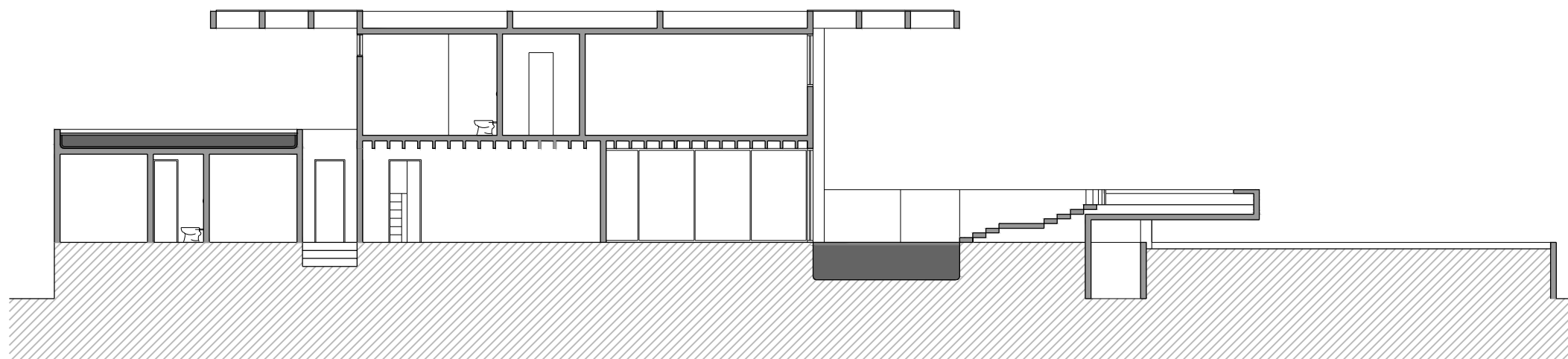
PERÍODO: 2011.2

PROFESSOR: MARCIO COTRIM CUNHA

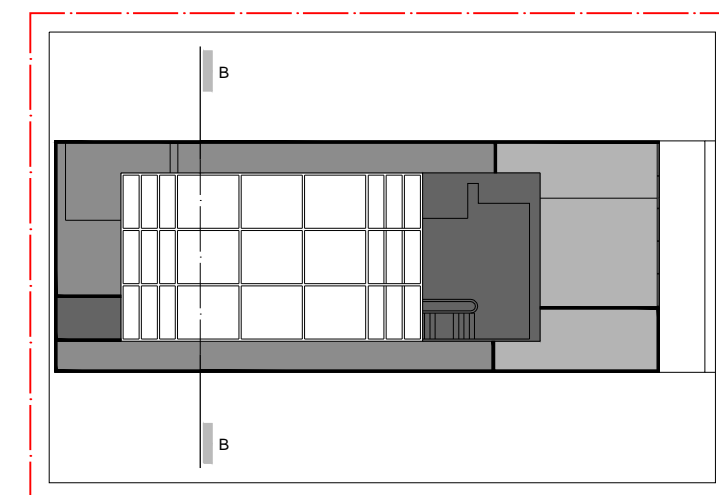
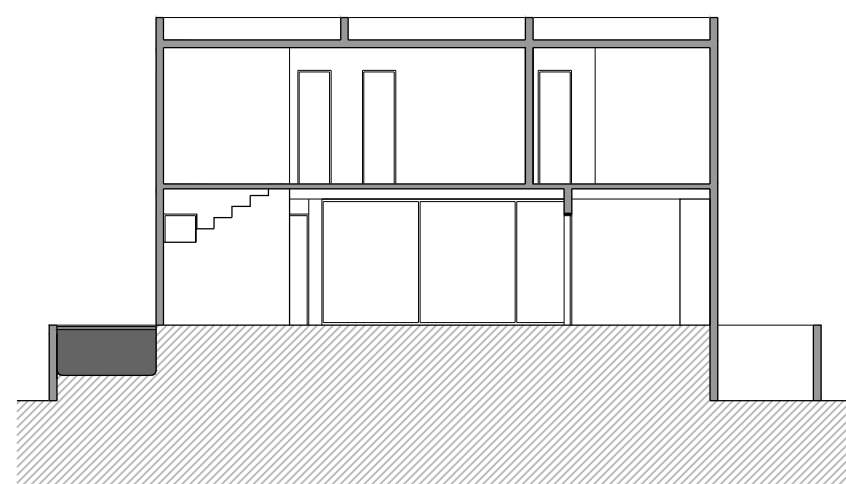
PRANCHA

05

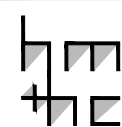
06



INDICAÇÃO CORTE AA
ESCALA 1/500



INDICAÇÃO CORTE BB
ESCALA 1/500



PROJETO: RES. ENG. JOÃO CELIDÔNIO G. REIS
ARQUITETURA: VILANOVA ARTIGAS
LOCAL: SÃO PAULO - SP
ANO: 1977

I. CORTE AA
ESCALA 1/150
II. CORTE BB
ESCALA 1/150



HM+HC - LPPM - DA - UFPB

DISCIPLINA: H.A.U. III

ALUNOS: ÉRIKA FIGUEIRÊDO
ISABELA CAMPOS

JAIME GALDINO
KIARA DANTAS

YASMIN PEREGRINO

PERÍODO: 2011.2

PROFESSOR: MARCIO COTRIM CUNHA

PRANCHA

06

06