

PROJETO: HOOPER HOUSE II
 ARQUITETURA: MARCEL BREUER
 LOCAL: BALTIMORE COUNTY, MARYLAND
 ANO: 1958-60

PLANTA DE LOCALIZAÇÃO
 ESCALA 1/400

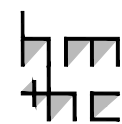
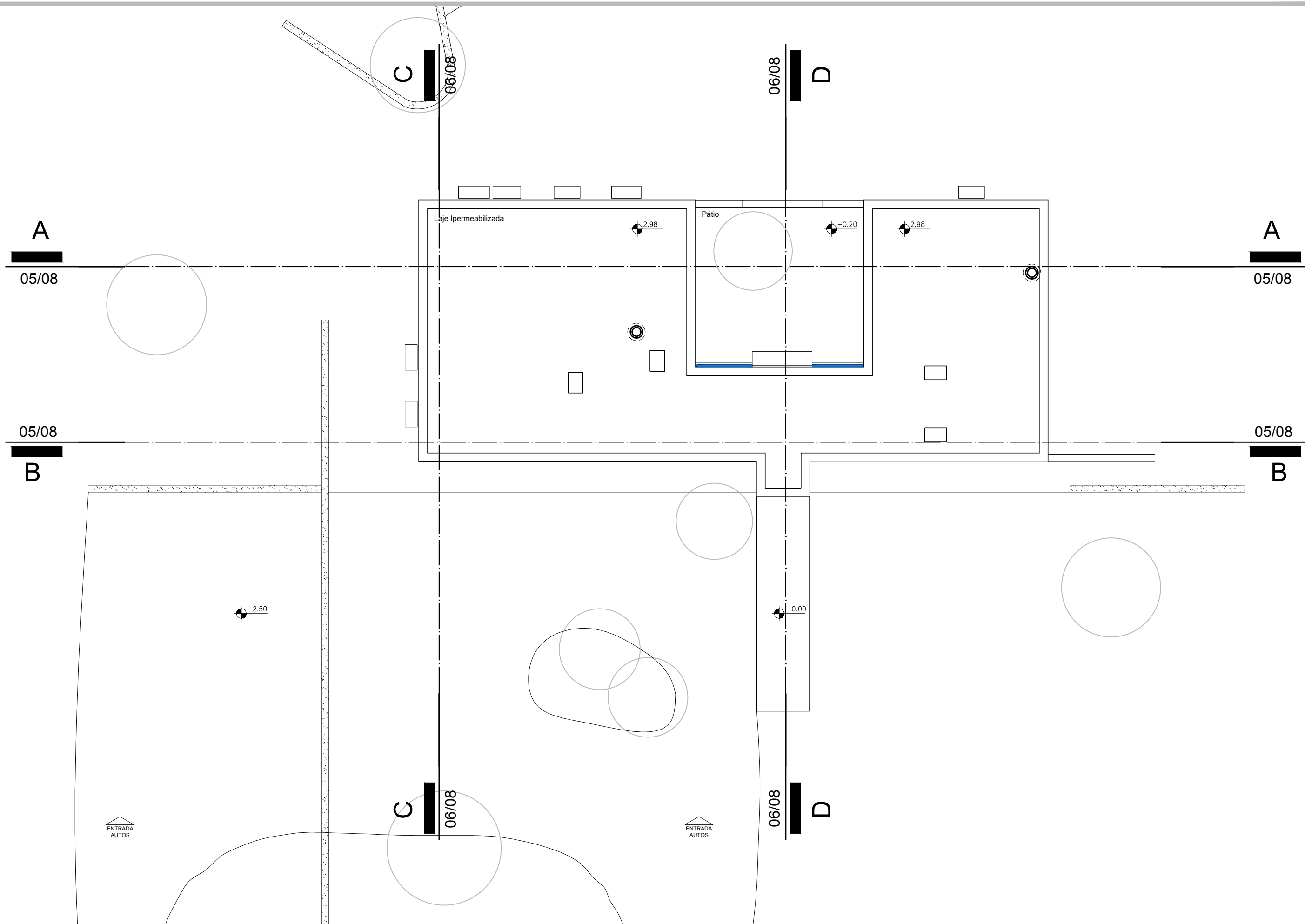


HM+HC - LPPM - DA - UFPB
 DISCIPLINA: ESTÁGIO SUPERVISIONADO V
 ALUNOS: ISABELLA CARTAXO
 GABRIELA ROCHA

PERÍODO: 2012.1
 PROFESSOR: MARCIO COTRIM CUNHA

PRANCHA

01
08



PROJETO: HOOPER HOUSE II
 ARQUITETURA: MARCEL BREUER
 LOCAL: BALTIMORE COUNTY, MARYLAND
 ANO: 1958-60

PLANTA DE COBERTA
 ESCALA 1/200

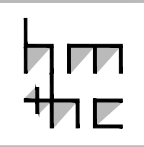
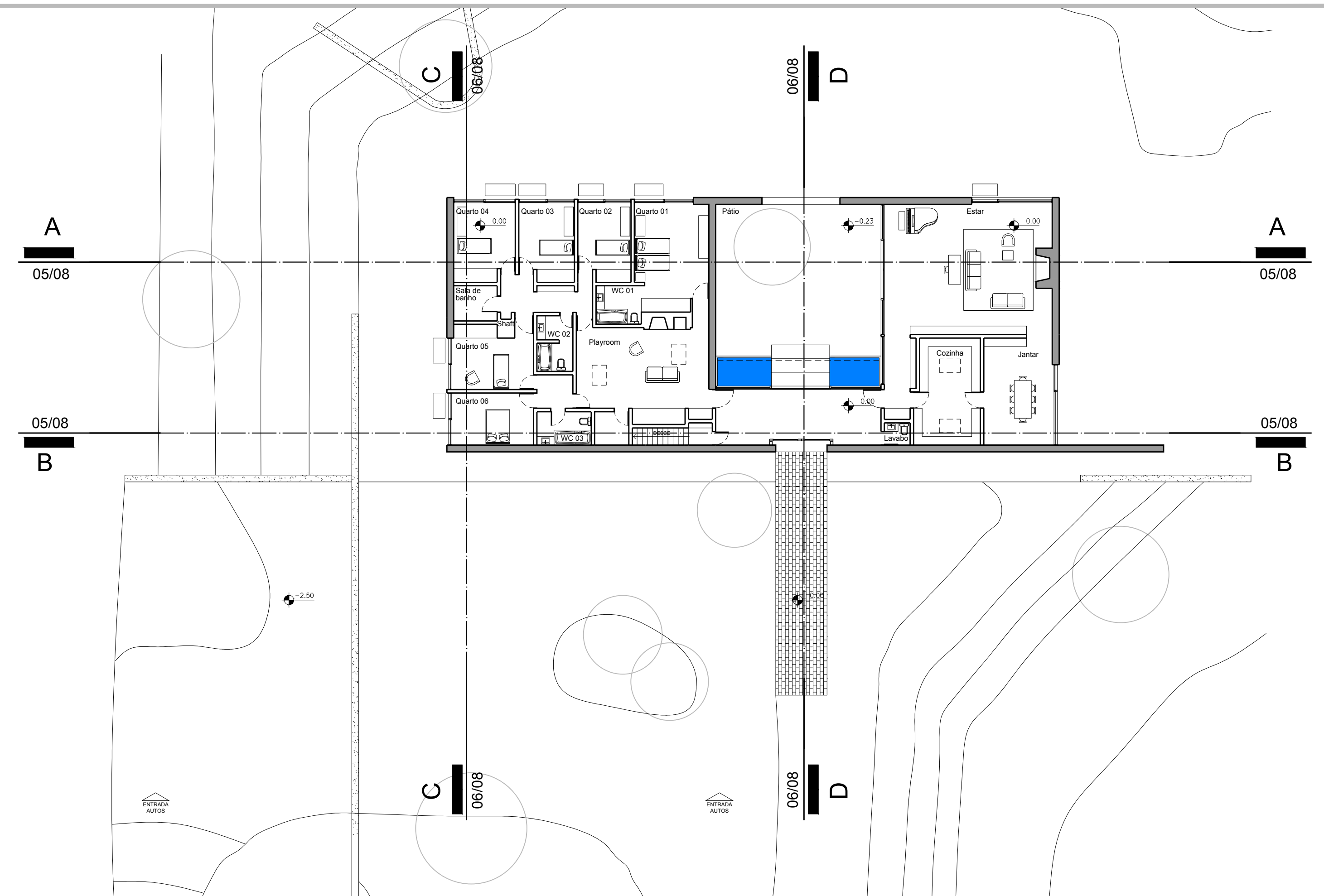


HM+HC - LPPM - DA - UFPB
 DISCIPLINA: ESTÁGIO SUPERVISIONADO V
 ALUNOS: ISABELLA CARTAXO
 GABRIELA ROCHA

PERÍODO: 2012.1
 PROFESSOR: MARCIO COTRIM CUNHA

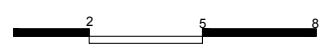
PRANCHA

02
08



PROJETO: HOOPER HOUSE II
 ARQUITETURA: MARCEL BREUER
 LOCAL: BALTIMORE COUNTY, MARYLAND
 ANO: 1958-60

PLANTA BAIXA - NÍVEL 0.00
 ESCALA 1/200



HM+HC - LPPM - DA - UFPB
 DISCIPLINA: ESTÁGIO SUPERVISIONADO V
 ALUNOS: ISABELLA CARTAXO
 GABRIELA ROCHA

PERÍODO: 2012.1
 PROFESSOR: MARCIO COTRIM CUNHA

PRANCHA
03
 08

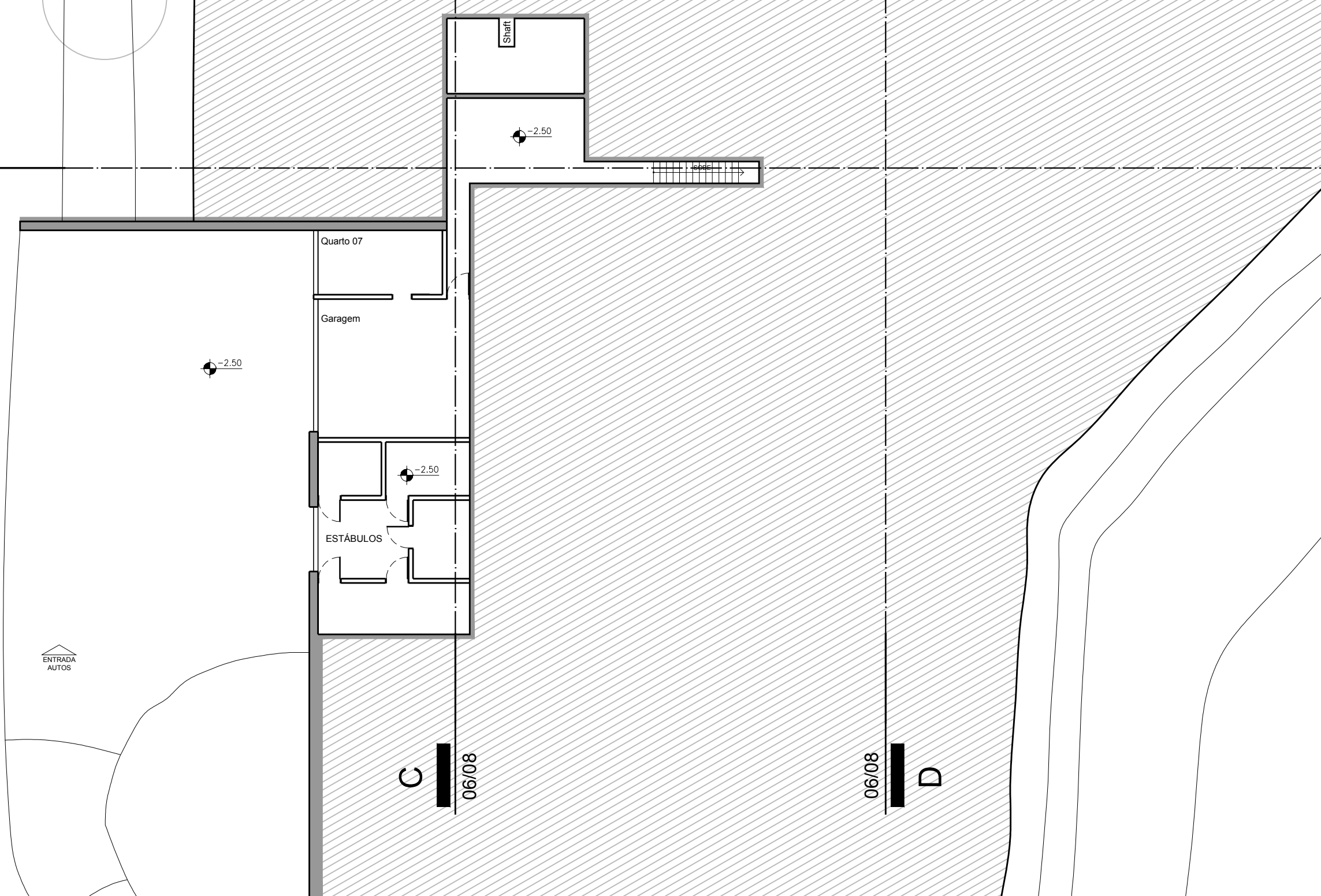
A
05/08

05/08
B

C
06/08

06/08
D

NÃO TEMOS MA
LINHA TOUCH COURO OFF-WHITE
30x60cm REF. 95446



ENTRADA
AUTOS

-2.50

C
06/08

06/08
D

-2.50

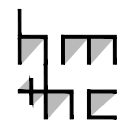
Shaft

-2.50

Quarto 07

Garagem

ESTÁBULOS



PROJETO: HOOPER HOUSE II
ARQUITETURA: MARCEL BREUER
LOCAL: BALTIMORE COUNTY, MARYLAND
ANO: 1958-60

PLANTA BAIXA - NÍVEL -2.50m
ESCALA 1/200

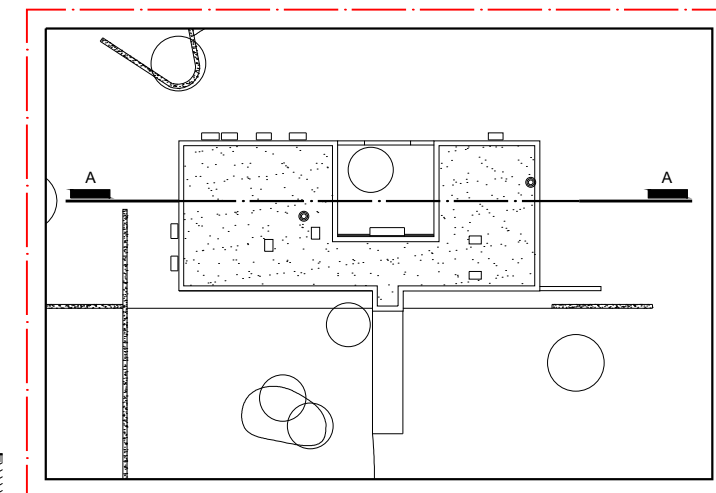
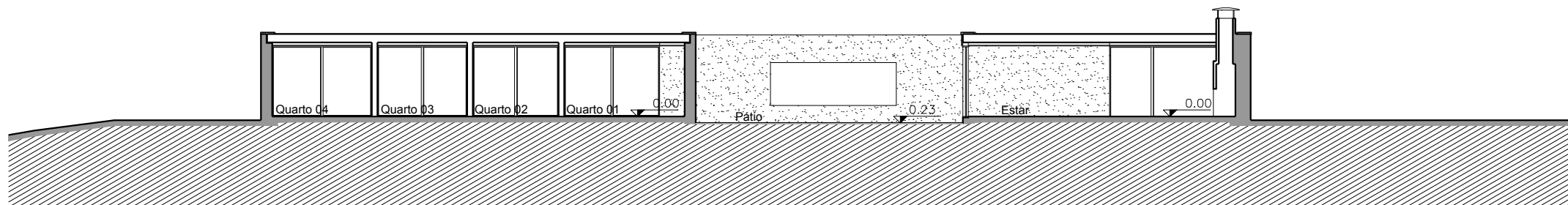


HM+HC - LPPM - DA - UFPB
DISCIPLINA: ESTÁGIO SUPERVISIONADO V
ALUNOS: ISABELLA CARTAXO
GABRIELA ROCHA

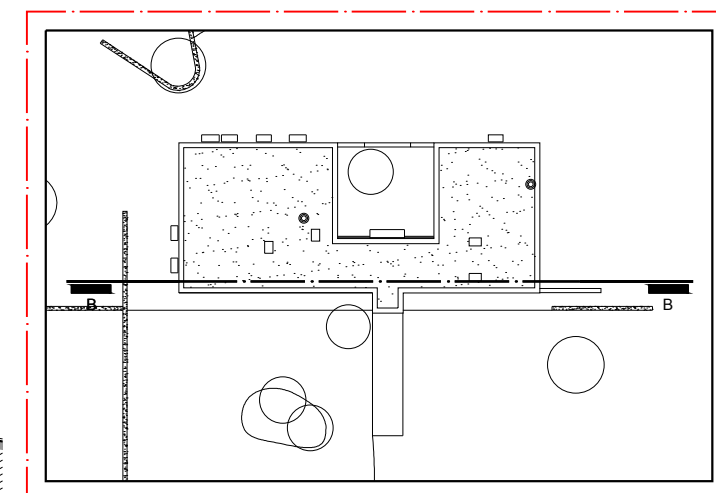
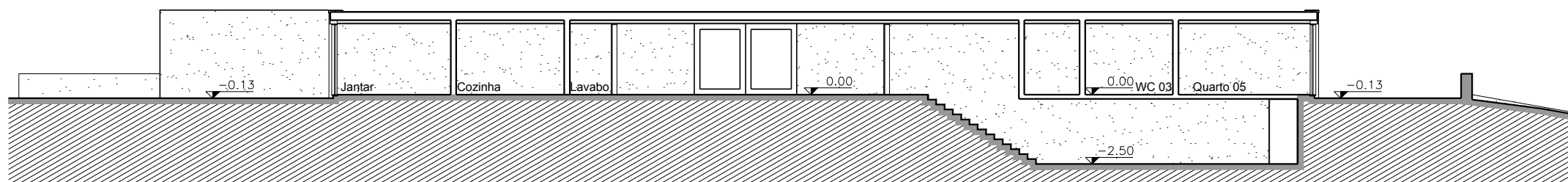
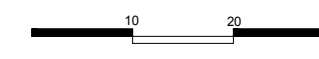
PERÍODO: 2012.1
PROFESSOR: MARCIO COTRIM CUNHA

PRANCHA

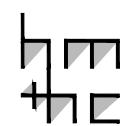
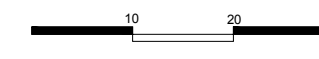
04
08



INDICAÇÃO CORTE AA
ESCALA 1/750

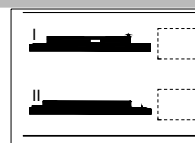


INDICAÇÃO CORTE BB
ESCALA 1/750



PROJETO: HOOPER HOUSE II
ARQUITETURA: MARCEL BREUER
LOCAL: BALTIMORE COUNTY, MARYLAND
ANO: 1958-60

I. CORTE AA
ESCALA 1/200
II. CORTE BB
ESCALA 1/200

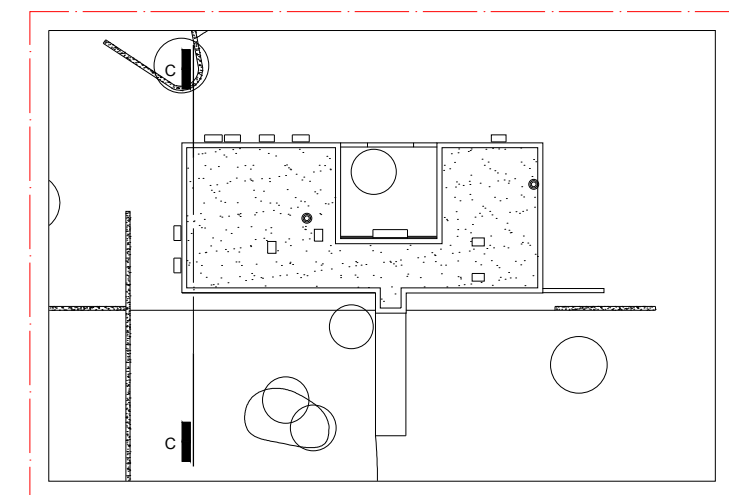
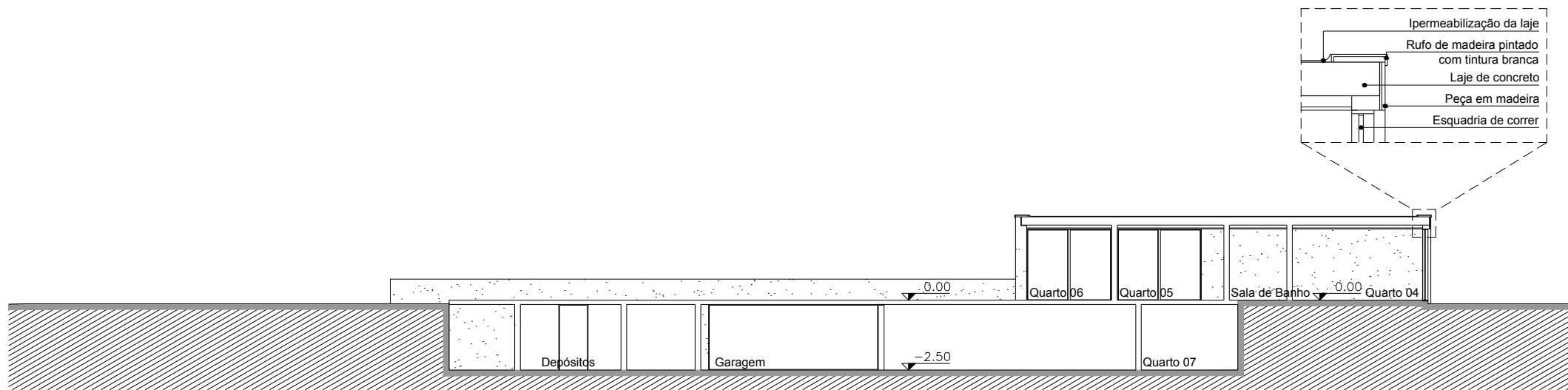


HM+HC - LPPM - DA - UFPB
DISCIPLINA: ESTÁGIO SUPERVISIONADO V
ALUNOS: ISABELLA CARTAXO
GABRIELA ROCHA

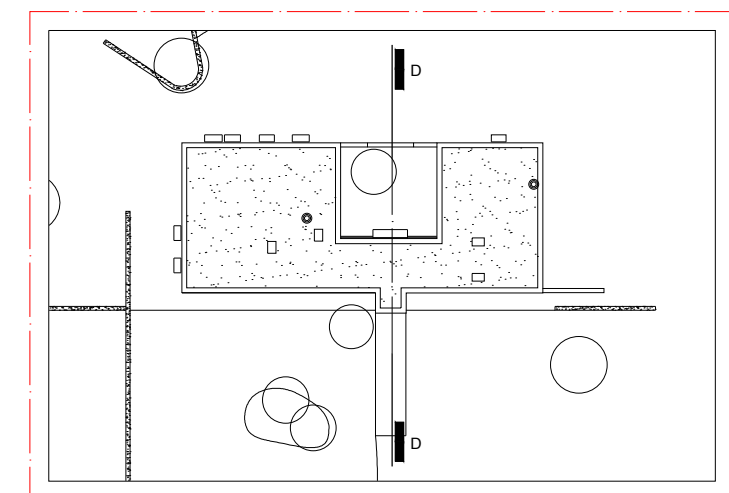
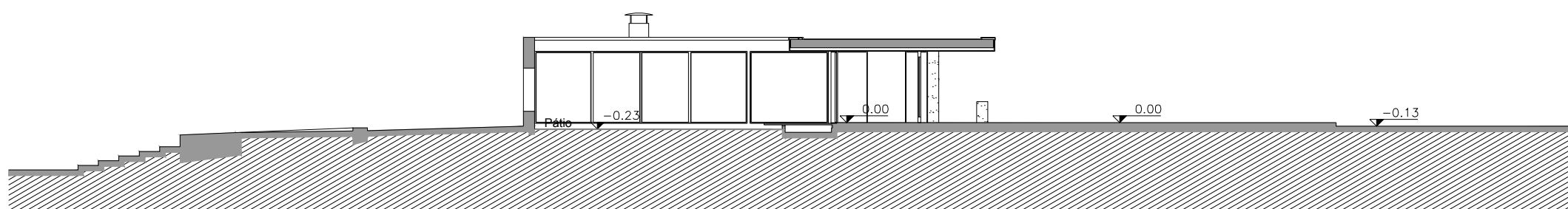
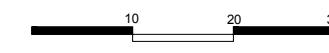
PERÍODO: 2012.1
PROFESSOR: MARCIO COTRIM CUNHA

PRANCHA

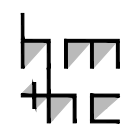
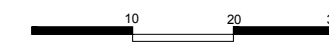
05
08



INDICAÇÃO CORTE CC
ESCALA 1/750

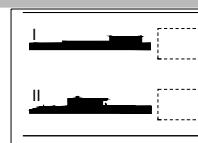


INDICAÇÃO CORTE DD
ESCALA 1/750



PROJETO: HOOPER HOUSE II
ARQUITETURA: MARCEL BREUER
LOCAL: BALTIMORE COUNTY, MARYLAND
ANO: 1958-60

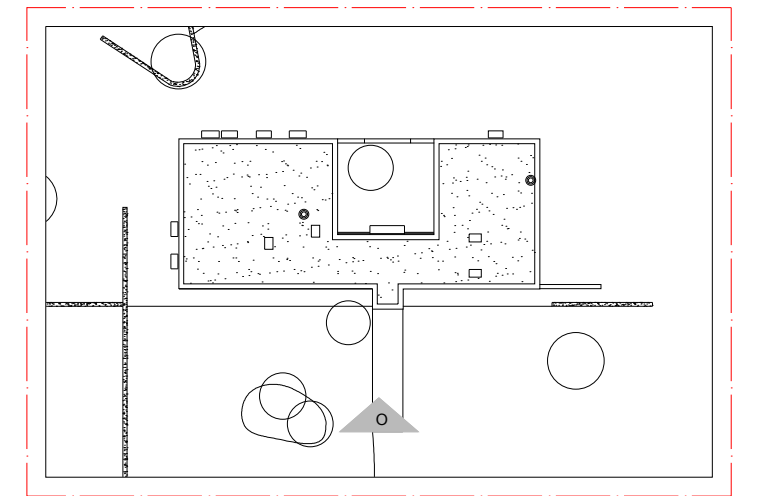
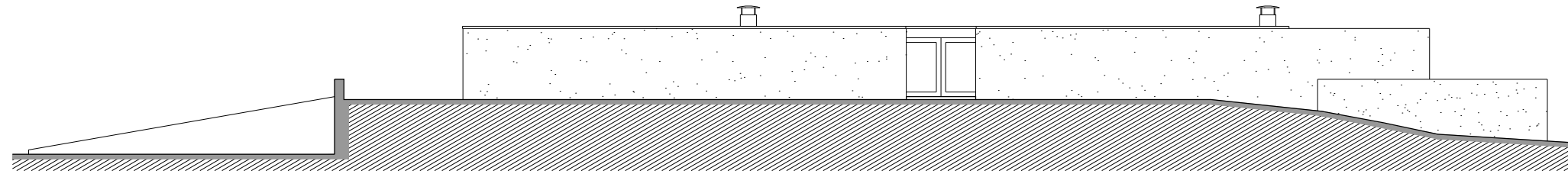
I. CORTE CC
ESCALA 1/200
II. CORTE DD
ESCALA 1/200



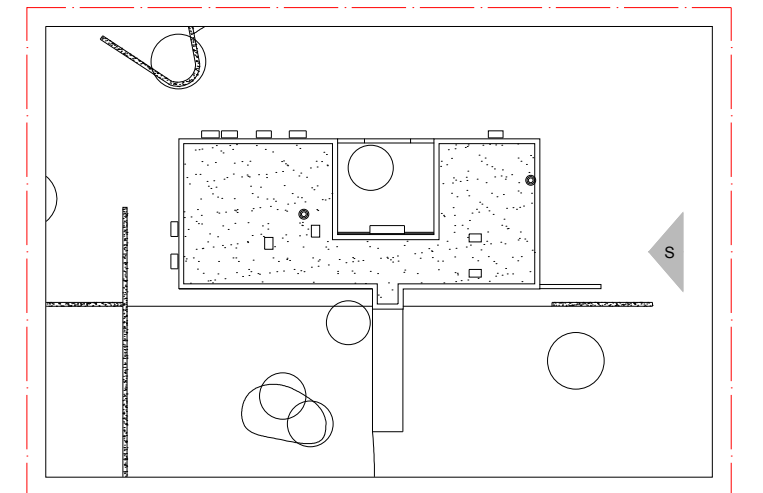
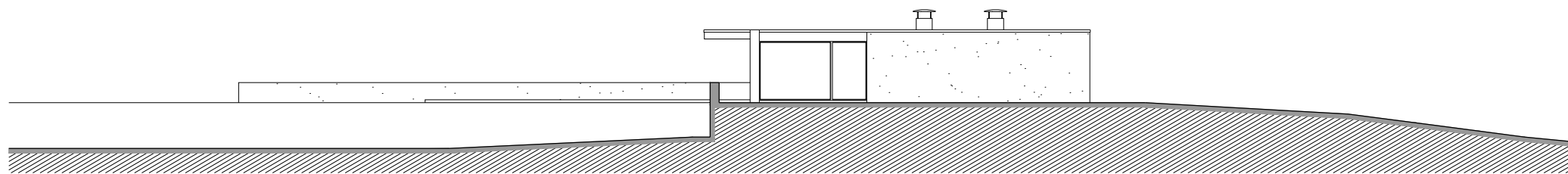
HM+HC - LPPM - DA - UFPB
DISCIPLINA: ESTÁGIO SUPERVISIONADO V
ALUNOS: ISABELLA CARTAXO
GABRIELA ROCHA

PERÍODO: 2012.1
PROFESSOR: MARCIO COTRIM CUNHA

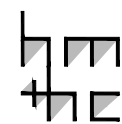
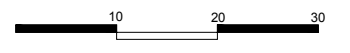
PRANCHA
06
08



INDICAÇÃO FACHADA OESTE
ESCALA 1/750

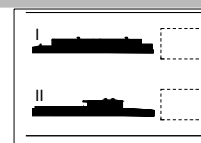
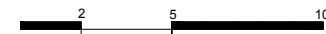


INDICAÇÃO FACHADA SUL
ESCALA 1/750



PROJETO: HOOPER HOUSE II
ARQUITETURA: MARCEL BREUER
LOCAL: BALTIMORE COUNTY, MARYLAND
ANO: 1958-60

I. FACHADA OESTE
ESCALA 1/250
II. FACHADA SUL
ESCALA 1/250

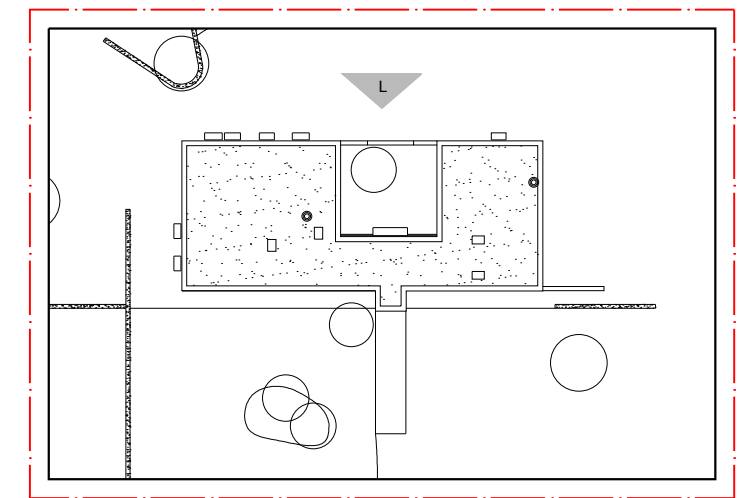
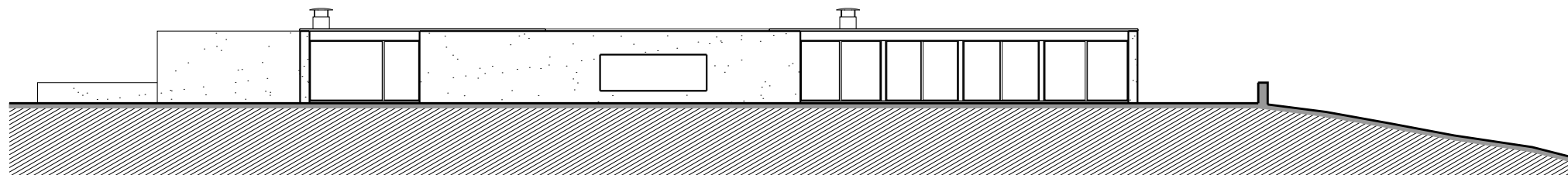


HM+HC - LPPM - DA - UFPB
DISCIPLINA: ESTÁGIO SUPERVISIONADO V
ALUNOS: ISABELLA CARTAXO
GABRIELA ROCHA

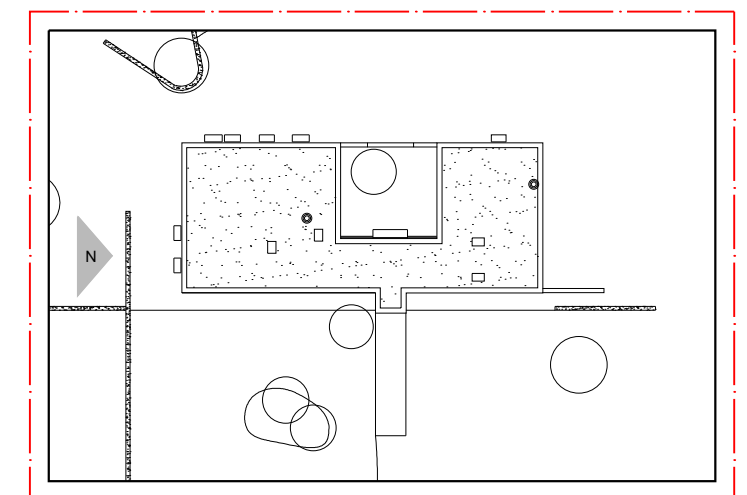
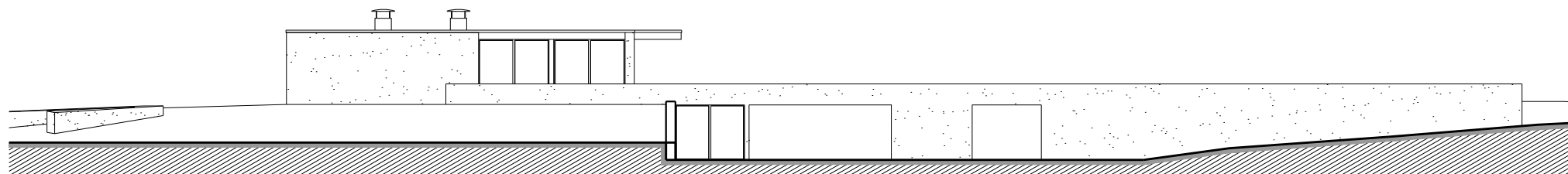
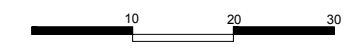
PERÍODO: 2012.1
PROFESSOR: MARCIO COTRIM CUNHA

PRANCHA

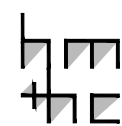
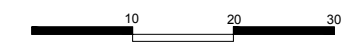
07
08



INDICAÇÃO FACHADA LESTE
ESCALA 1/750

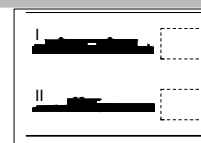
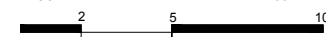


INDICAÇÃO FACHADA NORTE
ESCALA 1/750



PROJETO: HOOPER HOUSE II
ARQUITETURA: MARCEL BREUER
LOCAL: BALTIMORE COUNTY, MARYLAND
ANO: 1958-60

I. FACHADA LESTE
ESCALA 1/250
II. FACHADA NORTE
ESCALA 1/250



HM+HC - LPPM - DA - UFPB
DISCIPLINA: ESTÁGIO SUPERVISIONADO V
ALUNOS: ISABELLA CARTAXO
GABRIELA ROCHA

PERÍODO: 2012.1
PROFESSOR: MARCIO COTRIM CUNHA

PRANCHA

08
08