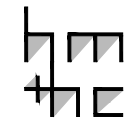


B
05/05

B
05/05

A
05/05

A
05/05



PROJETO: STUDY HOUSE #9
 ARQUITETURA: CHARLES EAMES - EERO SAARINEN
 LOCAL: LOS ANGELES - EUA
 ANO: 1949

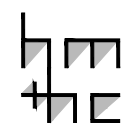
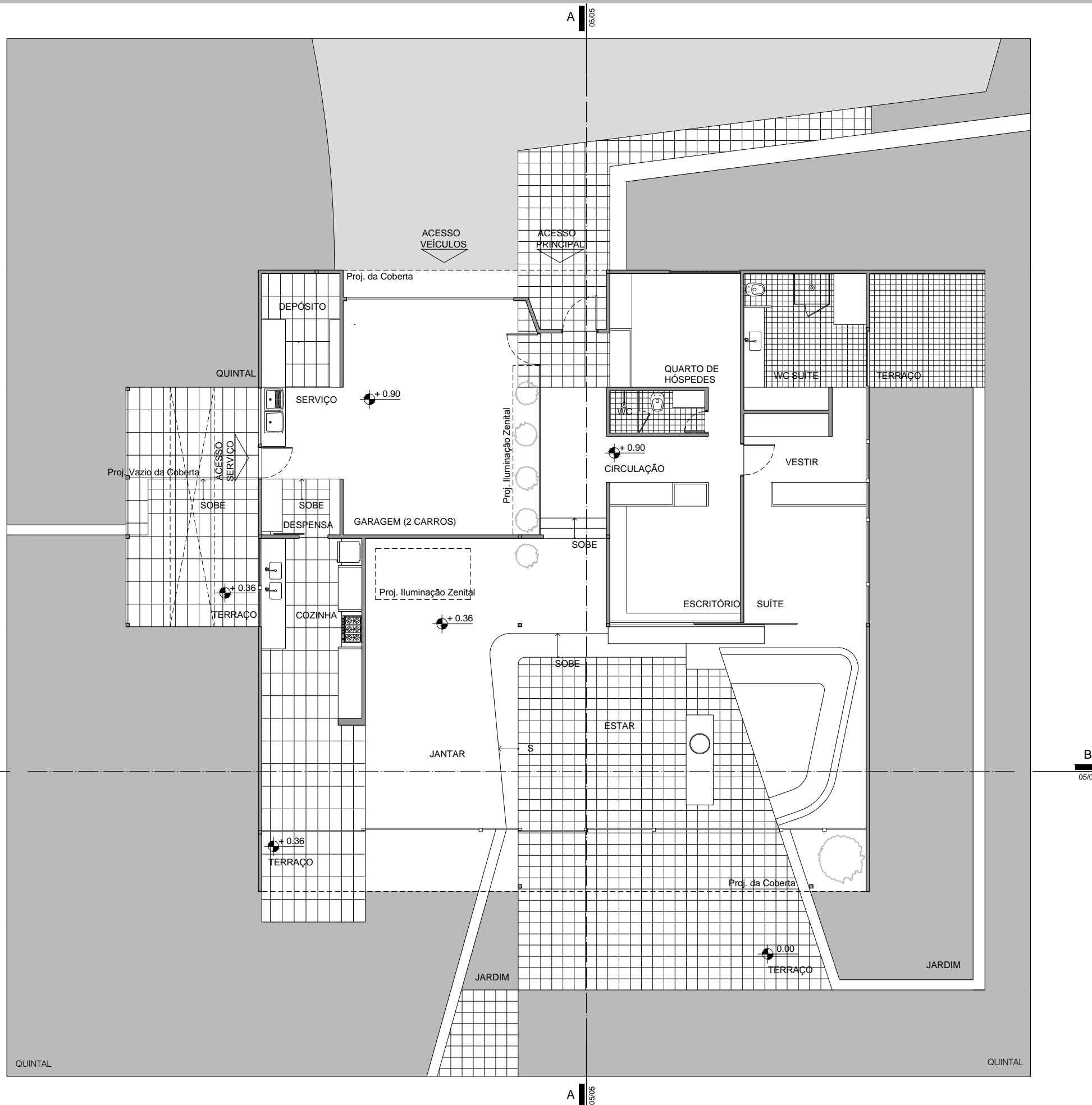
PLANTA DE LOCAÇÃO E COBERTA
 ESCALA 1/125



HM+HC - LPPM - DA - UFPB
 DISCIPLINA: H.A.U. IV
 ALUNOS: KRISHNAMURTY MOHANDAS

PERÍODO: 2011.2
 PROFESSOR: WYLNNA VIDAL

PRANCHA
01
 05



PROJETO: STUDY HOUSE #9
 ARQUITETURA: CHARLES EAMES - EERO SAARINEN
 LOCAL: LOS ANGELES - EUA
 ANO: 1949

PLANTA DE LOCAÇÃO E COBERTA
 ESCALA 1/125

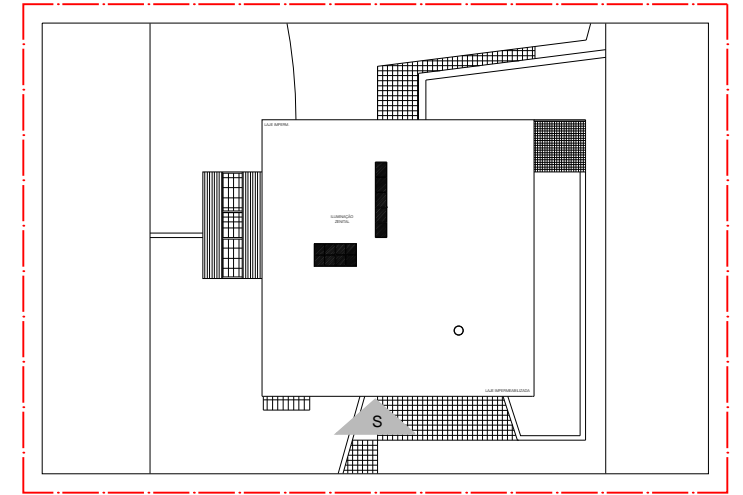
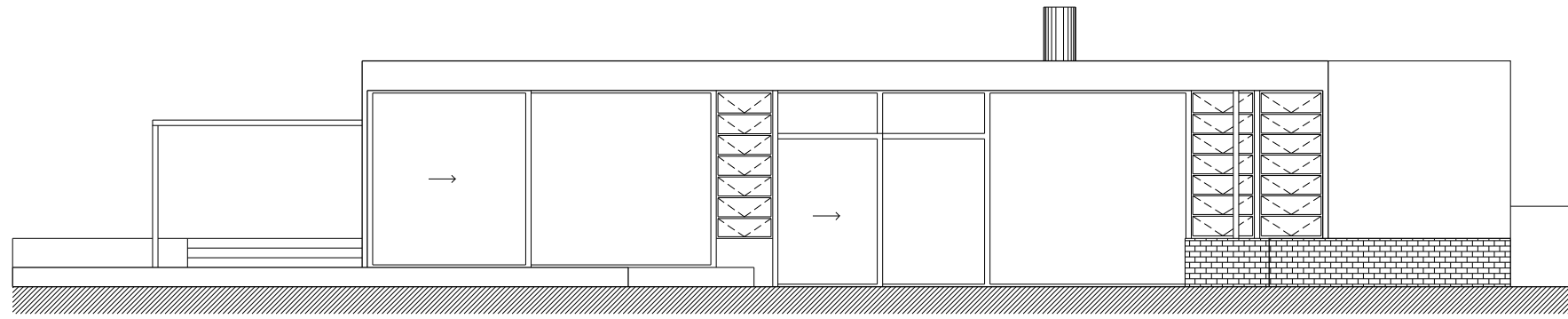


HM+HC - LPPM - DA - UFPB
 DISCIPLINA: H.A.U. IV
 ALUNOS: KRISHNAMURTY MOHANDAS

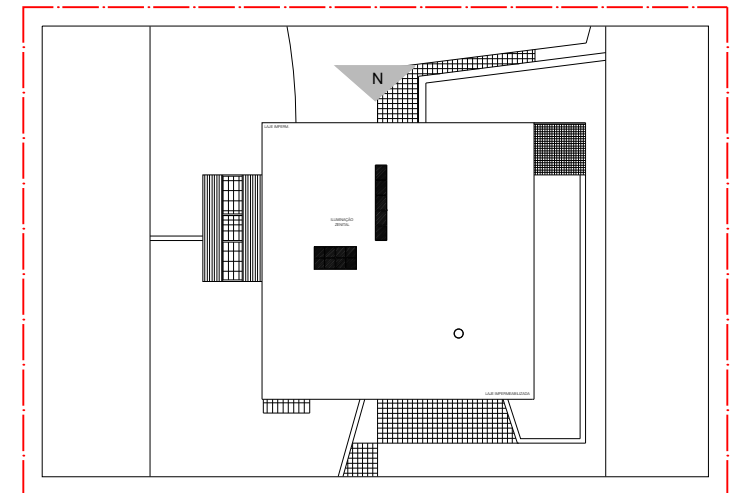
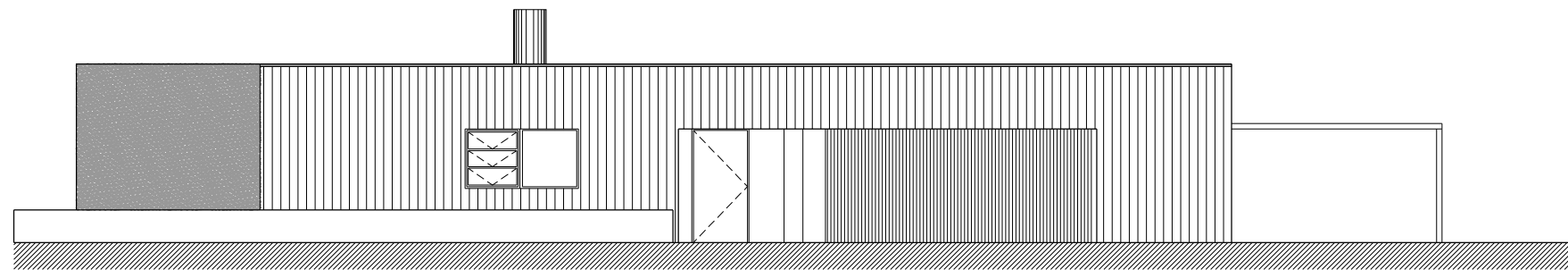
PERÍODO: 2011.2
 PROFESSOR: WYLNNA VIDAL

PRANCHA

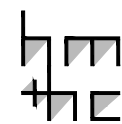
02
05



INDICAÇÃO FACHADA SUL
ESCALA 1/500

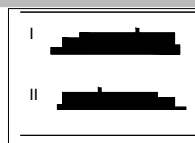


INDICAÇÃO FACHADA NORTE
ESCALA 1/500



PROJETO: STUDY HOUSE #9
ARQUITETURA: CHARLES EAMES - EERO SAARINEN
LOCAL: LOS ANGELES - EUA
ANO: 1949

I. FACHADA SUL
ESCALA 1/125
II. CORTE AA
ESCALA X/XXX

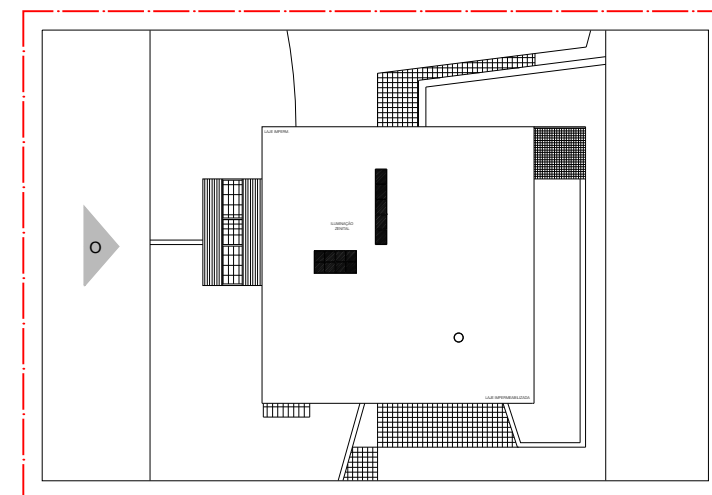
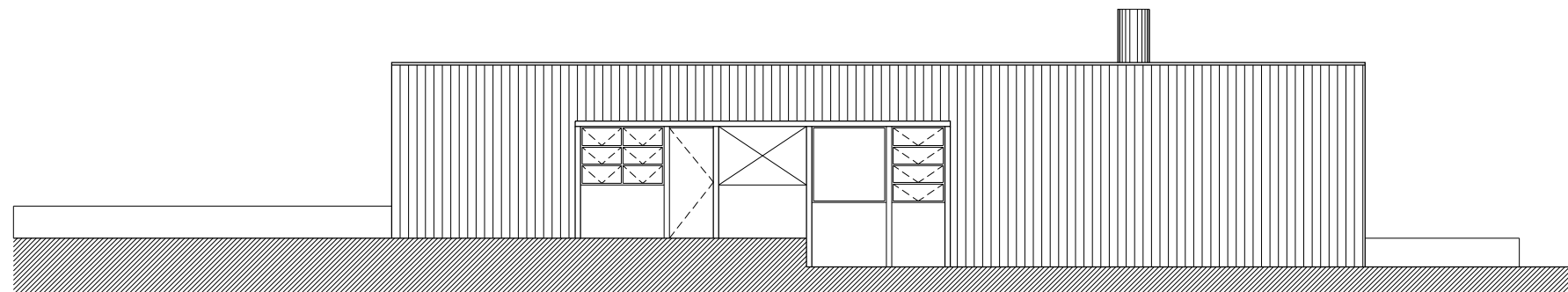


HM+HC - LPPM - DA - UFPB
DISCIPLINA: H.A.U. IV
ALUNOS: KRISHNAMURTY MOHANDAS

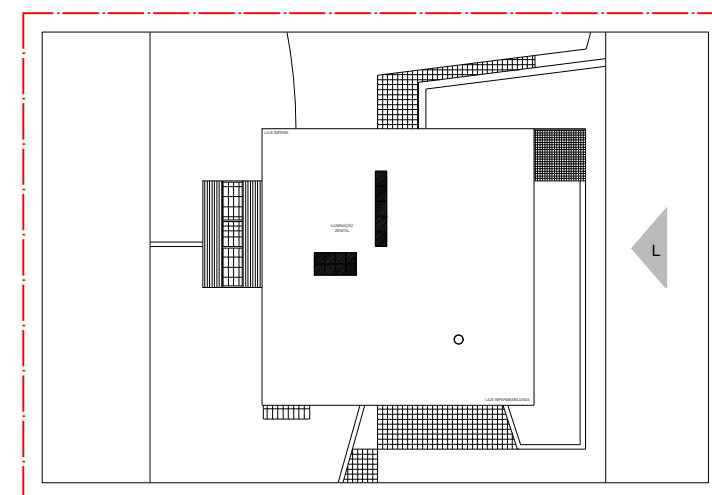
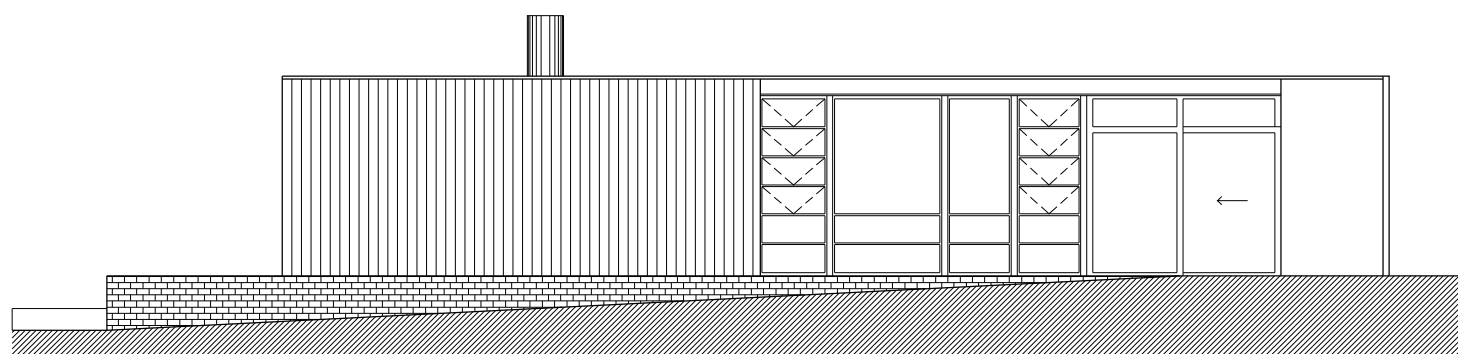
PERÍODO: 2011.2
PROFESSOR: WYLNNA VIDAL

PRANCHA

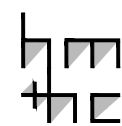
03
05



INDICAÇÃO FACHADA OESTE
ESCALA 1/500

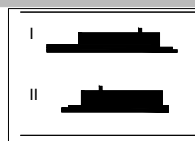


INDICAÇÃO FACHADA LESTE
ESCALA 1/500



PROJETO: STUDY HOUSE #9
ARQUITETURA: CHARLES EAMES - EERO SAARINEN
LOCAL: LOS ANGELES - EUA
ANO: 1949

I. FACHADA OESTE
ESCALA 1/125
II. CORTE LESTE
ESCALA 1/125



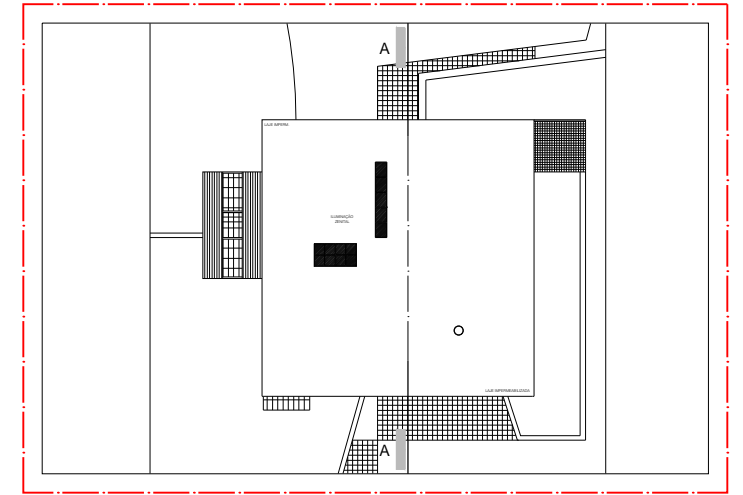
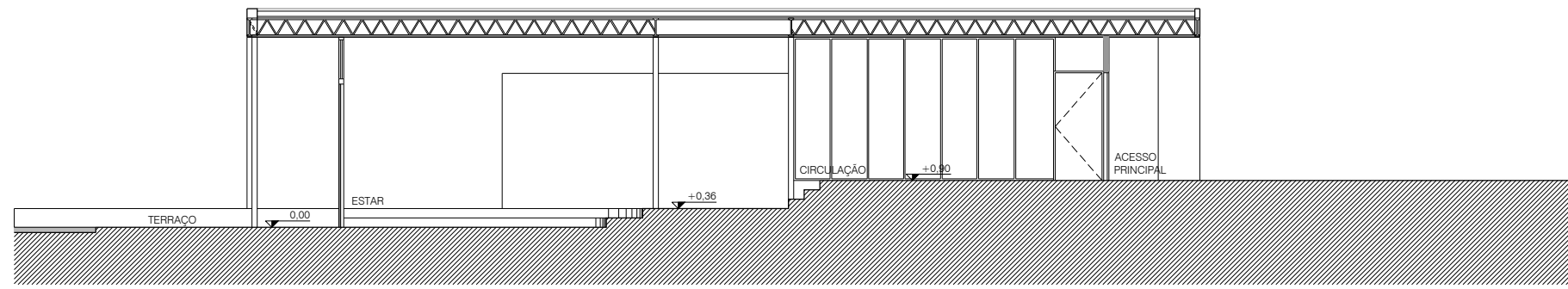
HM+HC - LPPM - DA - UFPB
DISCIPLINA: H.A.U. IV
ALUNOS: KRISHNAMURTY MOHANDAS

PERÍODO: 2011.2
PROFESSOR: WYLNNA VIDAL

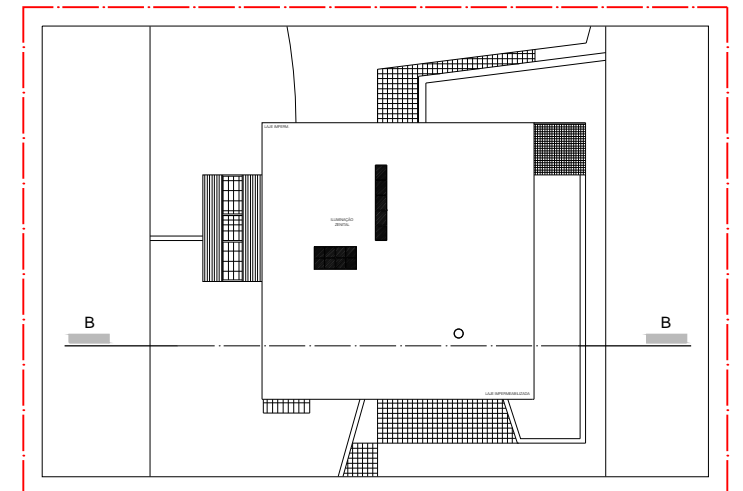
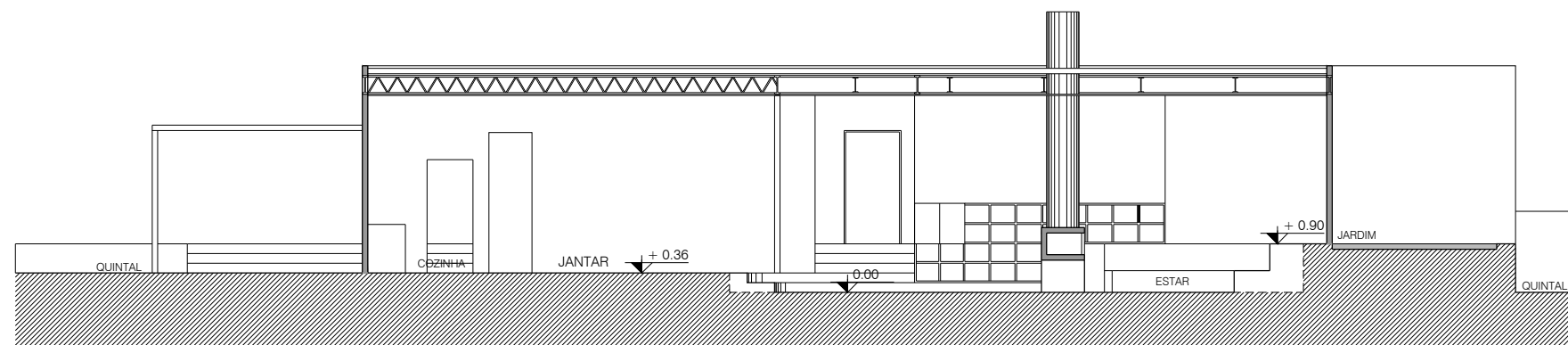
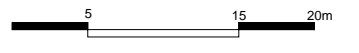
PRANCHA

04

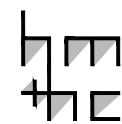
05



INDICAÇÃO CORTE AA
ESCALA 1/500

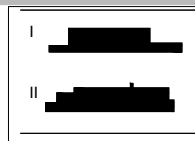


INDICAÇÃO CORTE BB
ESCALA 1/500



PROJETO: STUDY HOUSE #9
ARQUITETURA: CHARLES EAMES - EERO SAARINEN
LOCAL: LOS ANGELES - EUA
ANO: 1949

I. CORTE AA
ESCALA 1/125
II. CORTE BB
ESCALA 1/125



HM+HC - LPPM - DA - UFPB
DISCIPLINA: H.A.U. IV
ALUNOS: KRISHNAMURTY MOHANDAS

PERÍODO: 2011.2
PROFESSOR: WYLNNA VIDAL

PRANCHA
05
05