

PROJETO: CASA GERICKE
 ARQUITETURA: MIES VAN DER ROHE
 LOCAL: BERLIM, ALEMANHA
 ANO: 1932

PLANTA DE COBERTA
 ESCALA 1/150

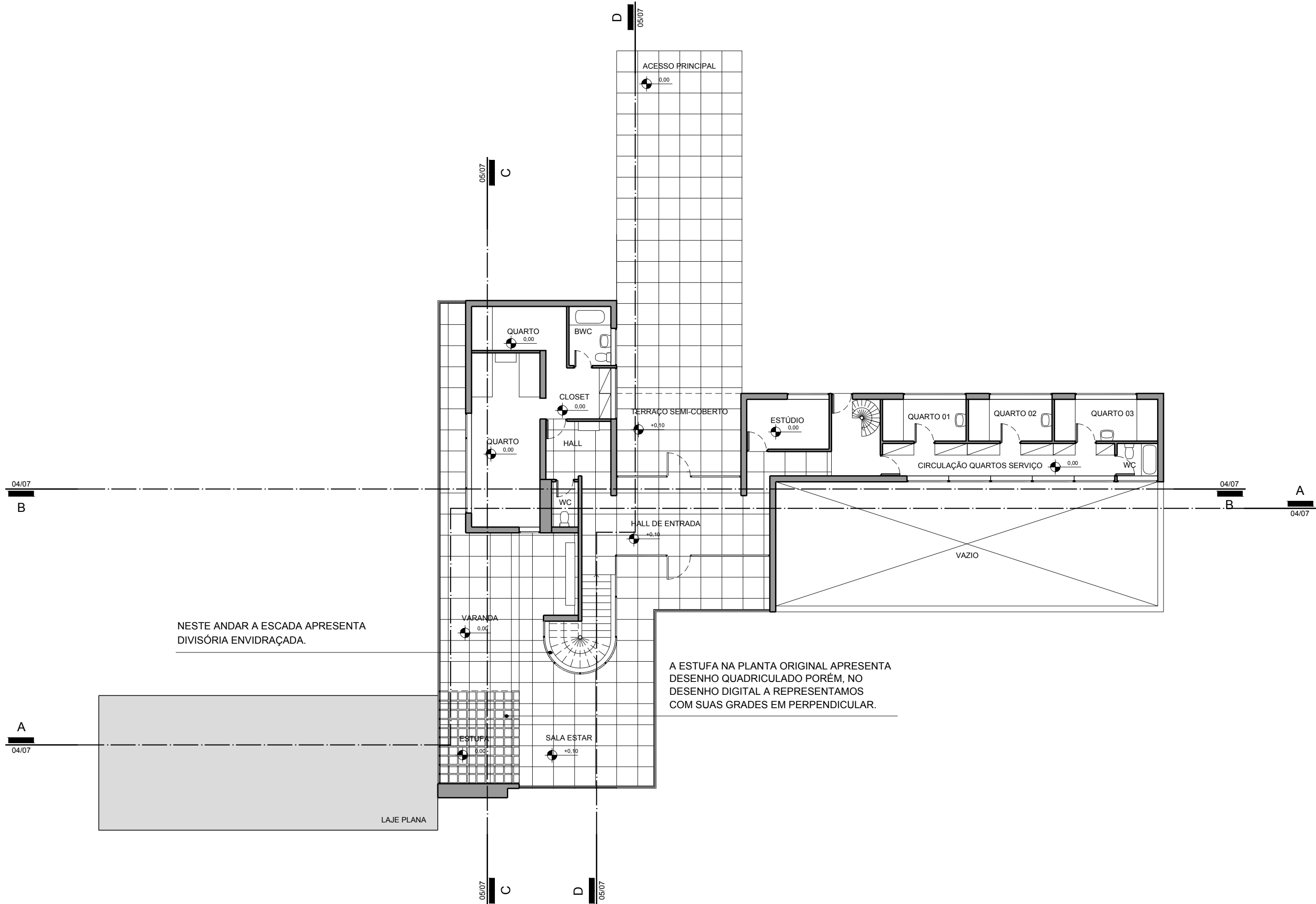


HM+HC - LPPM - DA - UFPB
 DISCIPLINA: H.A.U. III
 ALUNOS: SABRINA LIRA
 SABRINA HOLANDA

PERÍODO: 2012.2
 PROFESSOR: MARCIO COTRIM

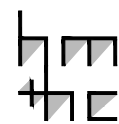
PRANCHA

01
07



NESTE ANDAR A ESCADA APRESENTA DIVISÓRIA ENVIDRAÇADA.

A ESTUFA NA PLANTA ORIGINAL APRESENTA DESENHO QUADRICULADO PORÉM, NO DESENHO DIGITAL A REPRESENTAMOS COM SUAS GRADES EM PERPENDICULAR.



PROJETO: CASA GERICKE
 ARQUITETURA: MIES VAN DER ROHE
 LOCAL: BERLIM, ALEMANHA
 ANO: 1932

PLANTA BAIXA - NÍVEL ZERO
 ESCALA 1/150

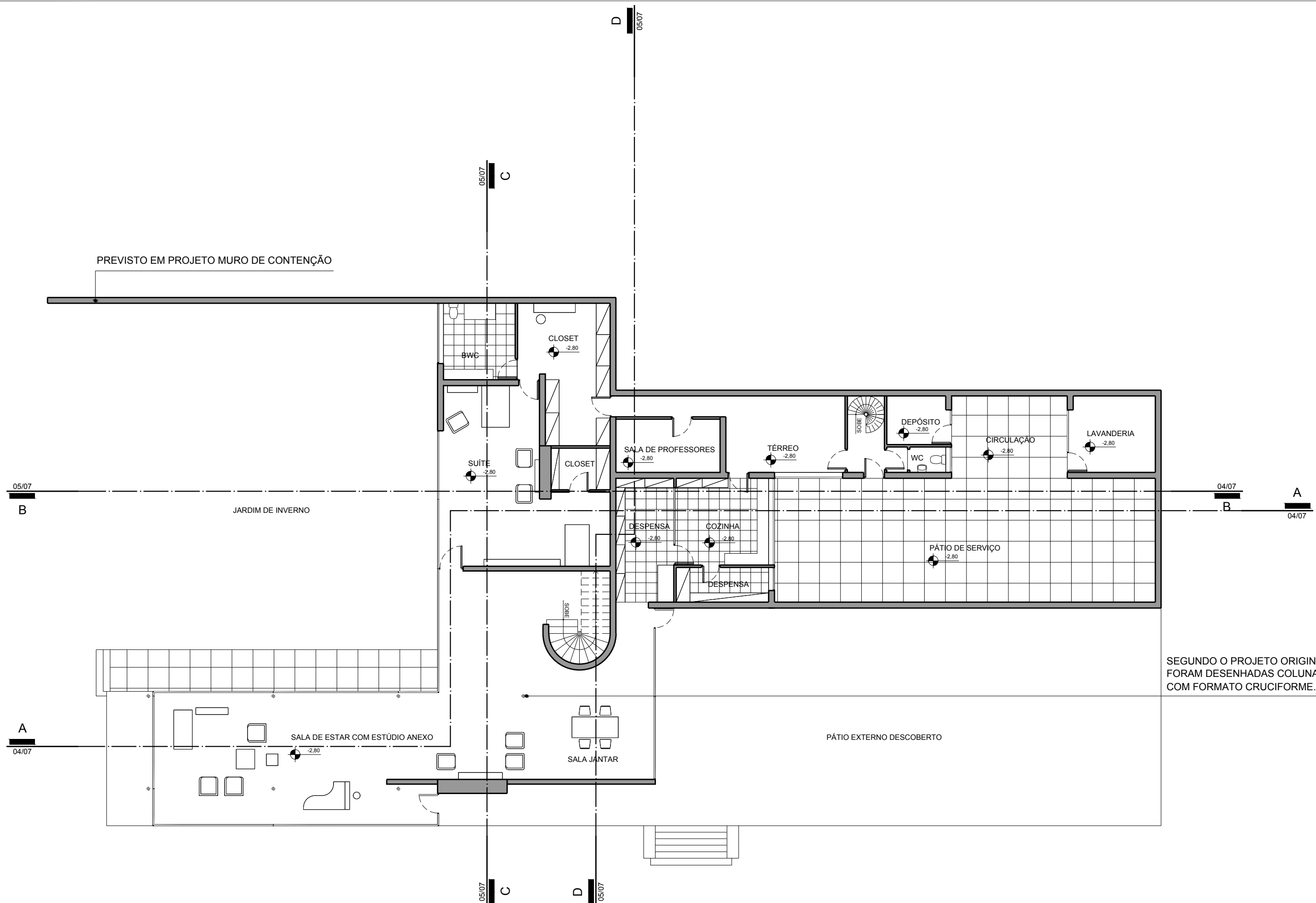


HM+HC - LPPM - DA - UFPB
 DISCIPLINA: H.A.U. III
 ALUNOS: SABRINA LIRA
 SABRINA HOLANDA

PERÍODO: 2012.2
 PROFESSOR: MARCIO COTRIM

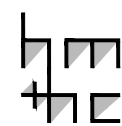
PRANCHA

02
 07



PREVISTO EM PROJETO MURO DE CONTENÇÃO

SEGUNDO O PROJETO ORIGINAL FORAM DESENHADAS COLUNAS COM FORMATO CRUCIFORME.



PROJETO: CASA GERICKE
 ARQUITETURA: MIES VAN DER ROHE
 LOCAL: BERLIM, ALEMANHA
 ANO: 1932

PLANTA BAIXA - NÍVEL -2.80 m
 ESCALA 1/150

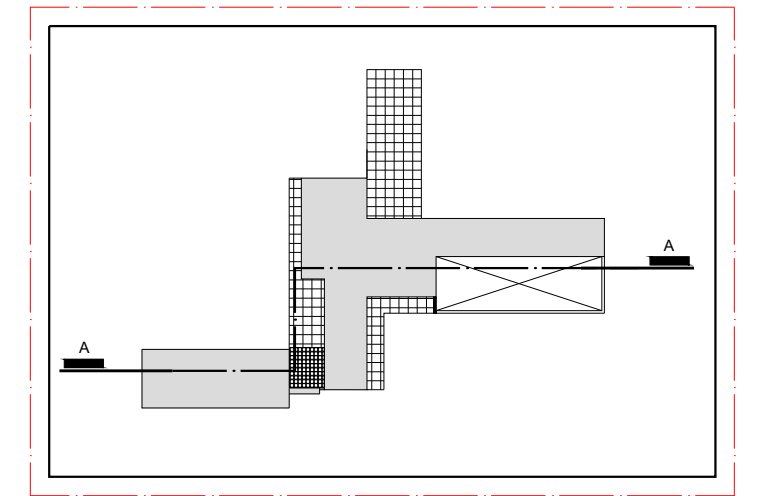
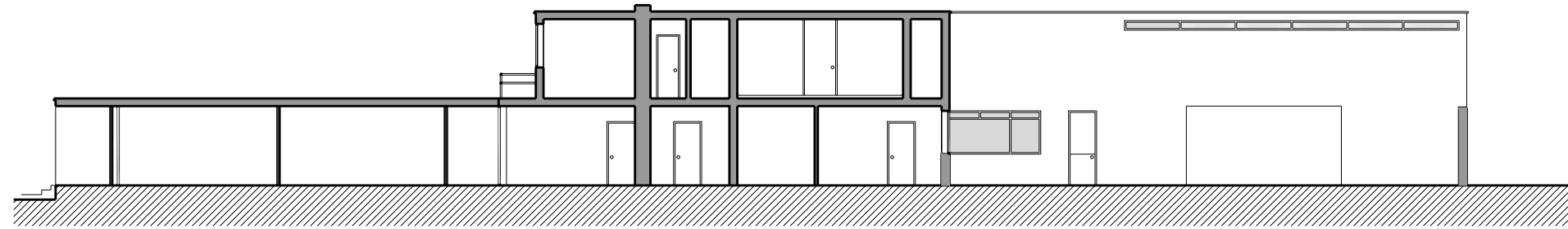


HM+HC - LPPM - DA - UFPB
 DISCIPLINA: H.A.U. III
 ALUNOS: SABRINA LIRA
 SABRINA HOLANDA

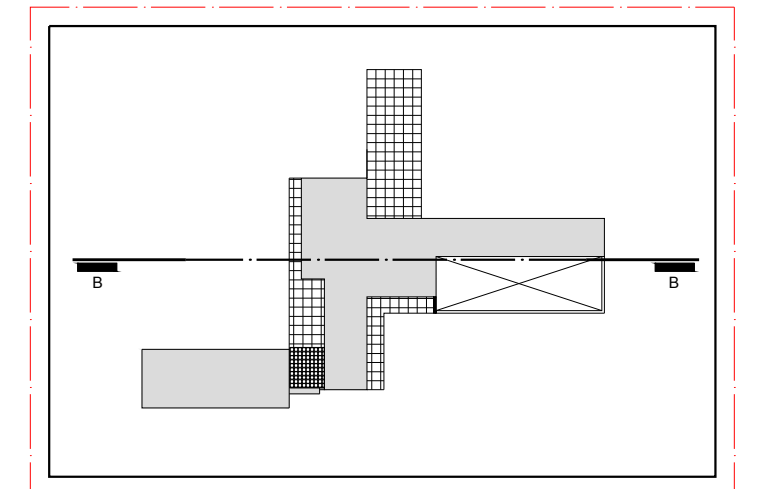
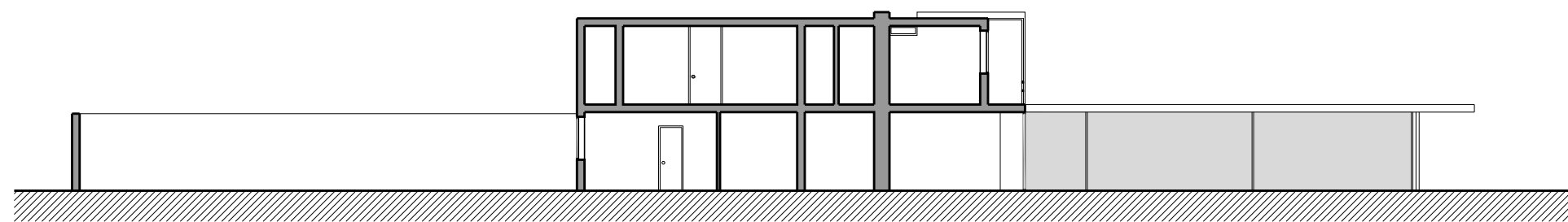
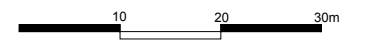
PERÍODO: 2012.2
 PROFESSOR: MARCIO COTRIM

PRANCHA

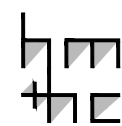
03
 07



INDICAÇÃO CORTE AA
ESCALA 1/750

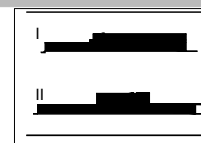


INDICAÇÃO CORTE BB
ESCALA 1/750



PROJETO: CASA GERCKE
ARQUITETURA: MIES VAN DER ROHE
LOCAL: BERLIM, ALEMANHA
ANO: 1932

I. CORTE AA
ESCALA 1/200
II. CORTE BB
ESCALA 1/200

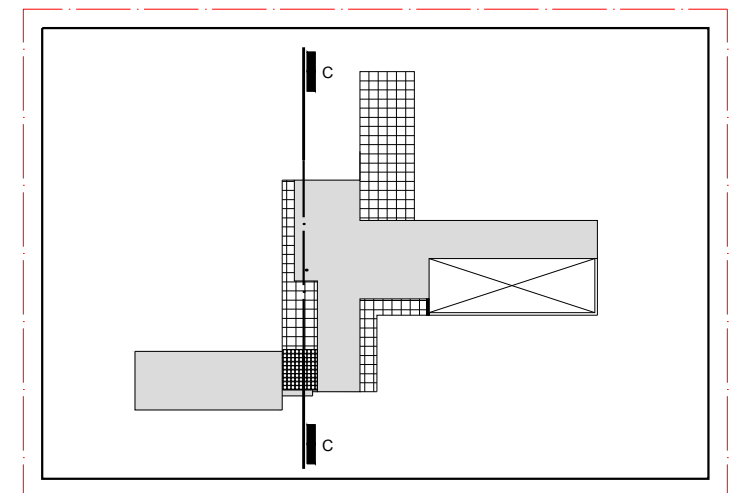
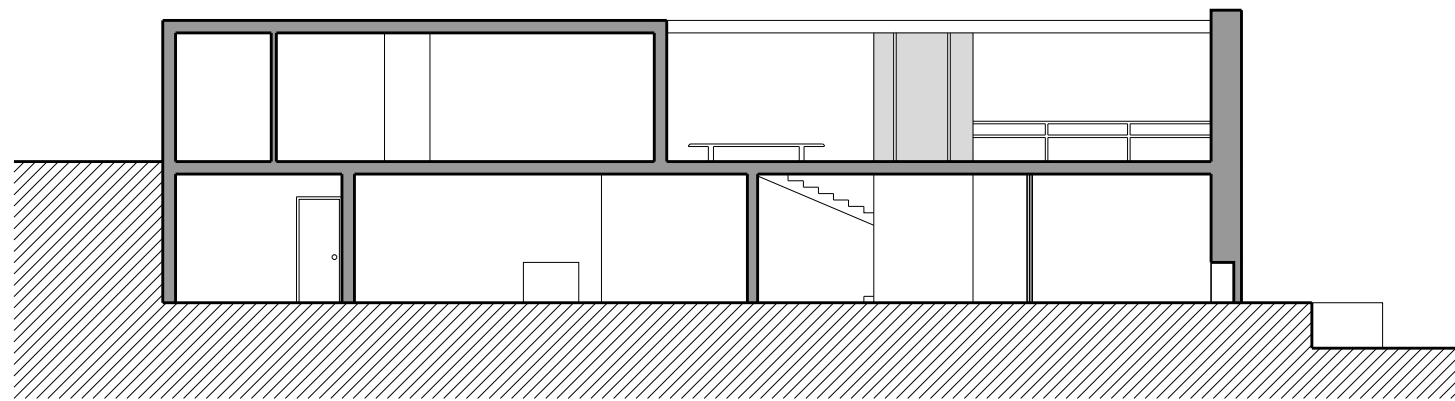


HM+HC - LPPM - DA - UFPB
DISCIPLINA: H.A.U. III
ALUNOS: SABRINA LIRA
SABRINA HOLANDA

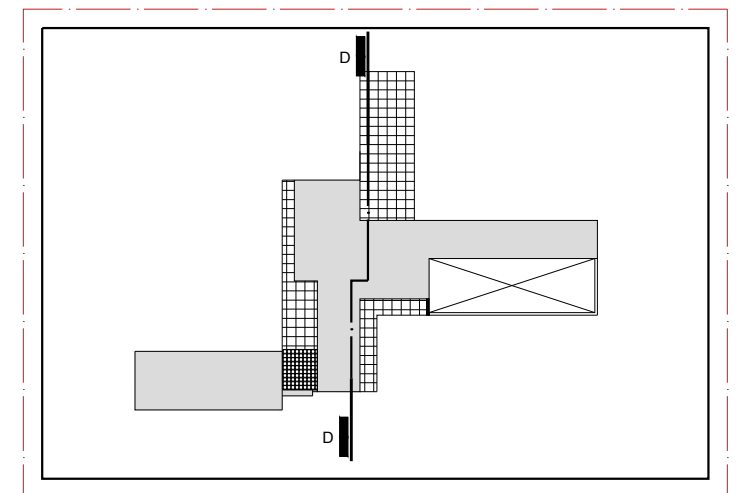
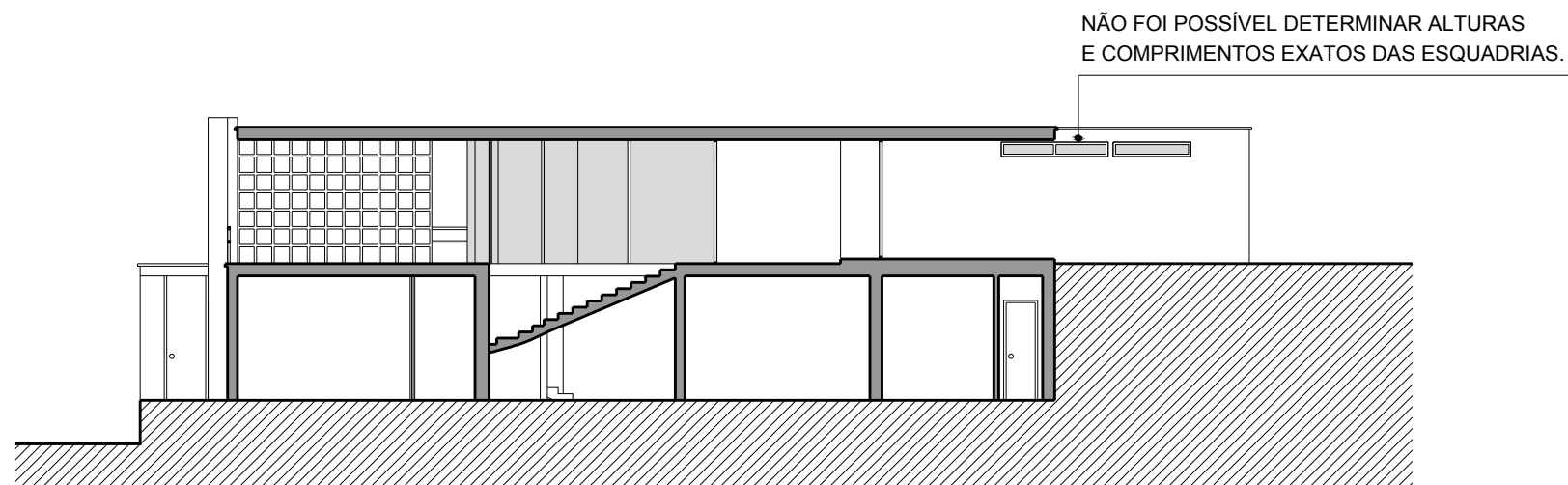
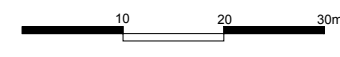
PERÍODO: 2012.2
PROFESSOR: MARCIO COTRIM

PRANCHA

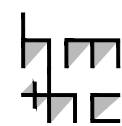
04
07



INDICAÇÃO CORTE CC
ESCALA 1/750



INDICAÇÃO CORTE DD
ESCALA 1/750



PROJETO: CASA GERICKE
ARQUITETURA: MIES VAN DER ROHE
LOCAL: BERLIM, ALEMANHA
ANO: 1932

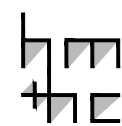
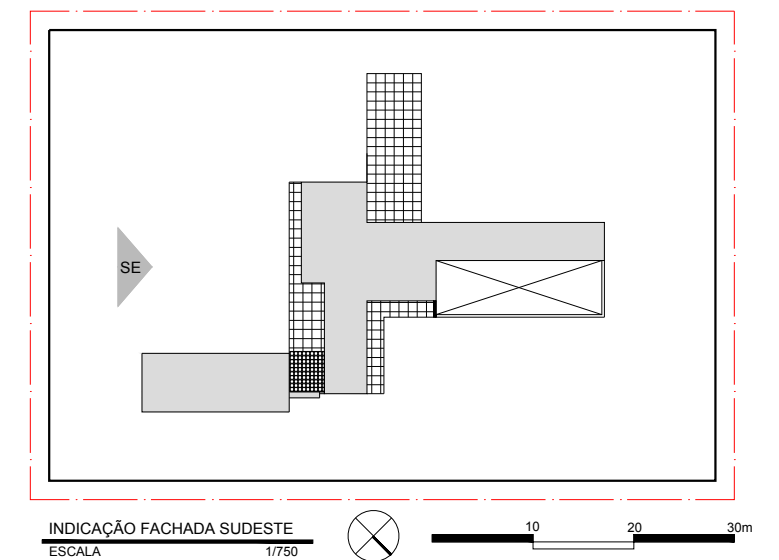
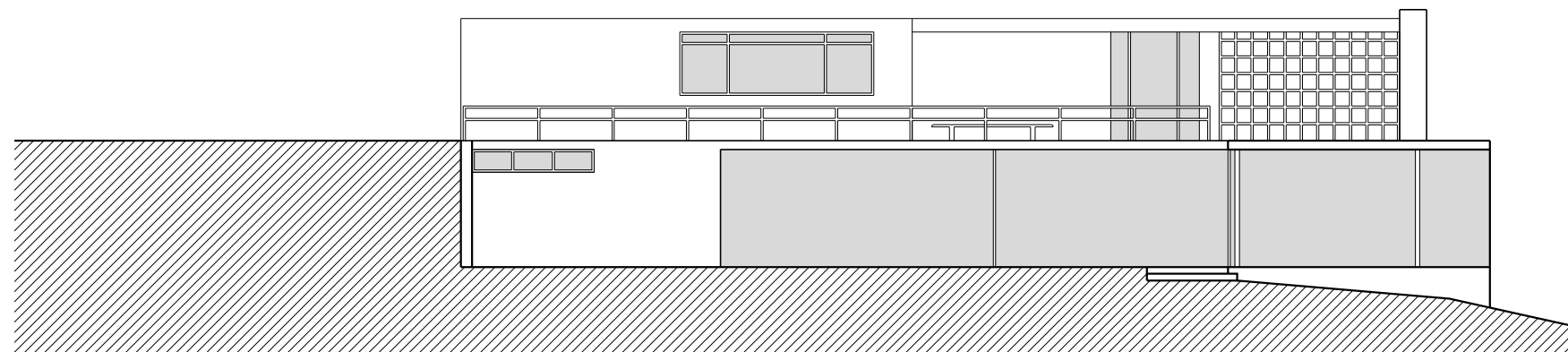
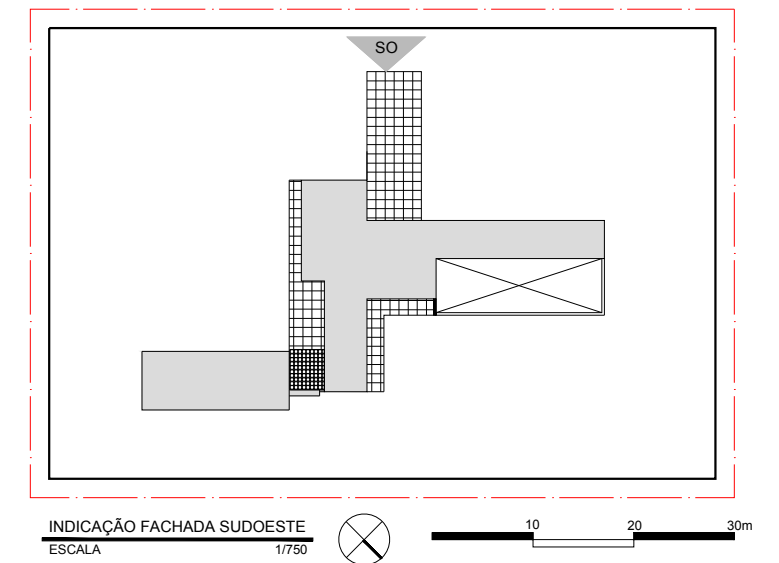
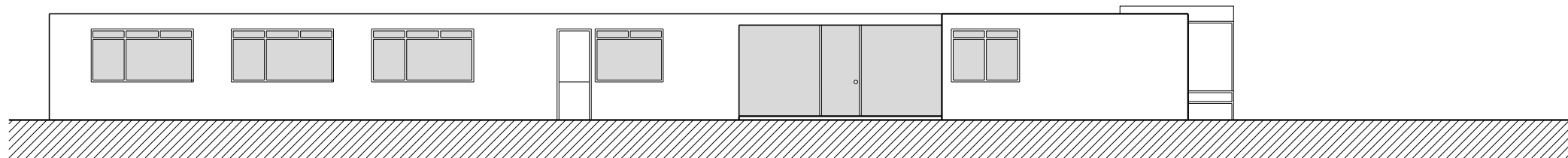
I. CORTE CC
ESCALA 1/150
II. CORTE DD
ESCALA 1/150



HM+HC - LPPM - DA - UFPB
DISCIPLINA: H.A.U. III
ALUNOS: SABRINA LIRA
SABRINA HOLANDA

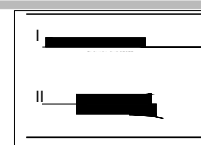
PERÍODO: 2012.2
PROFESSOR: MARCIO COTRIM

PRANCHA
05
07



PROJETO: CASA GERICKE
 ARQUITETURA: MIES VAN DER ROHE
 LOCAL: BERLIM, ALEMANHA
 ANO: 1932

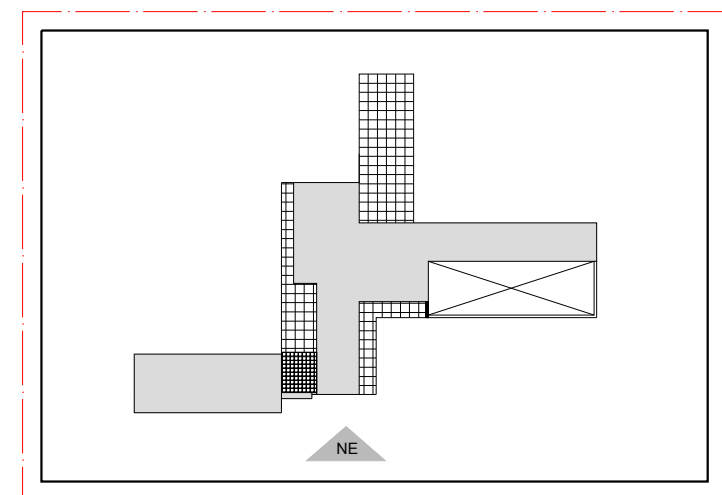
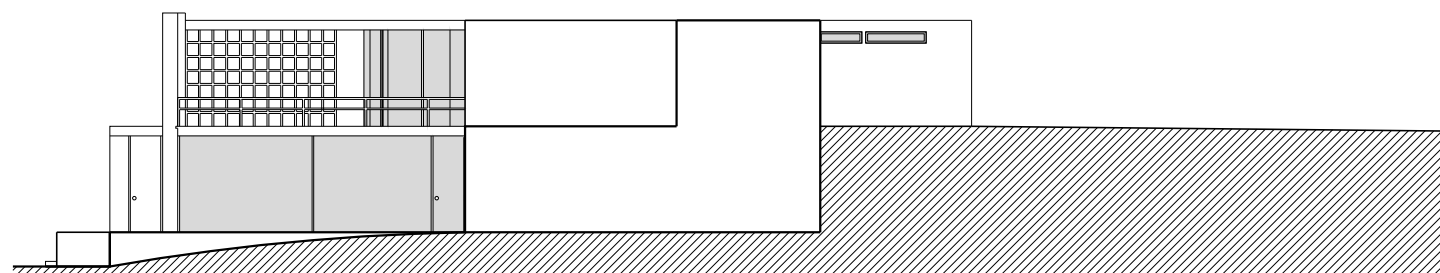
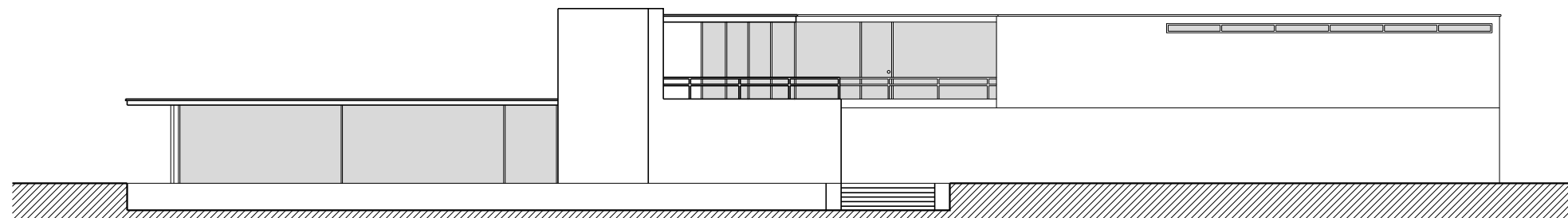
I. FACHADA SUDOESTE
 ESCALA 1/150
 II. FACHADA SUDESTE
 ESCALA 1/150



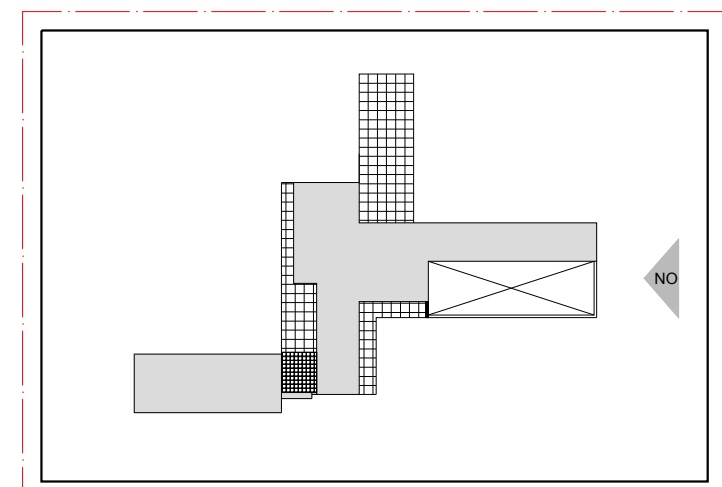
HM+HC - LPPM - DA - UFPB
 DISCIPLINA: H.A.U. III
 ALUNOS: SABRINA LIRA
 SABRINA HOLANDA

PERÍODO: 2012.2
 PROFESSOR: MARCIO COTRIM

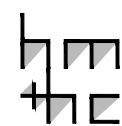
PRANCHA
06
 07



INDICAÇÃO FACHADA NORDESTE
ESCALA 1/750



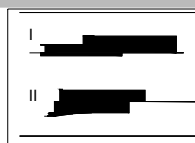
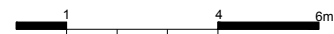
INDICAÇÃO FACHADA NOROESTE
ESCALA 1/750



PROJETO: CASA GERICKE
ARQUITETURA: MIES VAN DER ROHE
LOCAL: BERLIM, ALEMANHA
ANO: 1932

I. FACHADA NORDESTE
ESCALA 1/200

II. FACHADA NOROESTE
ESCALA 1/200



HM+HC - LPPM - DA - UFPB
DISCIPLINA: H.A.U. III
ALUNOS: SABRINA LIRA
SABRINA HOLANDA

PERÍODO: 2012.2
PROFESSOR: MARCIO COTRIM

PRANCHA

07

07