

PROJETO: CASA DO ARQUITETO EM NANCY
 ARQUITETURA: JEAN PROUVÉ
 LOCAL: NANCY, FRANÇA
 ANO: 1954

IMPLANTACÃO

ESCALA 1/500



HM+HC - LPPM - DA - UFPB

DISCIPLINA: ESTÁGIO SUPERVISIONADO VI

ALUNOS: AMANDA ANDREGHETTI DANTAS

RAYSSA DE CARVALHO MARQUES

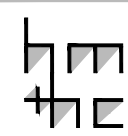
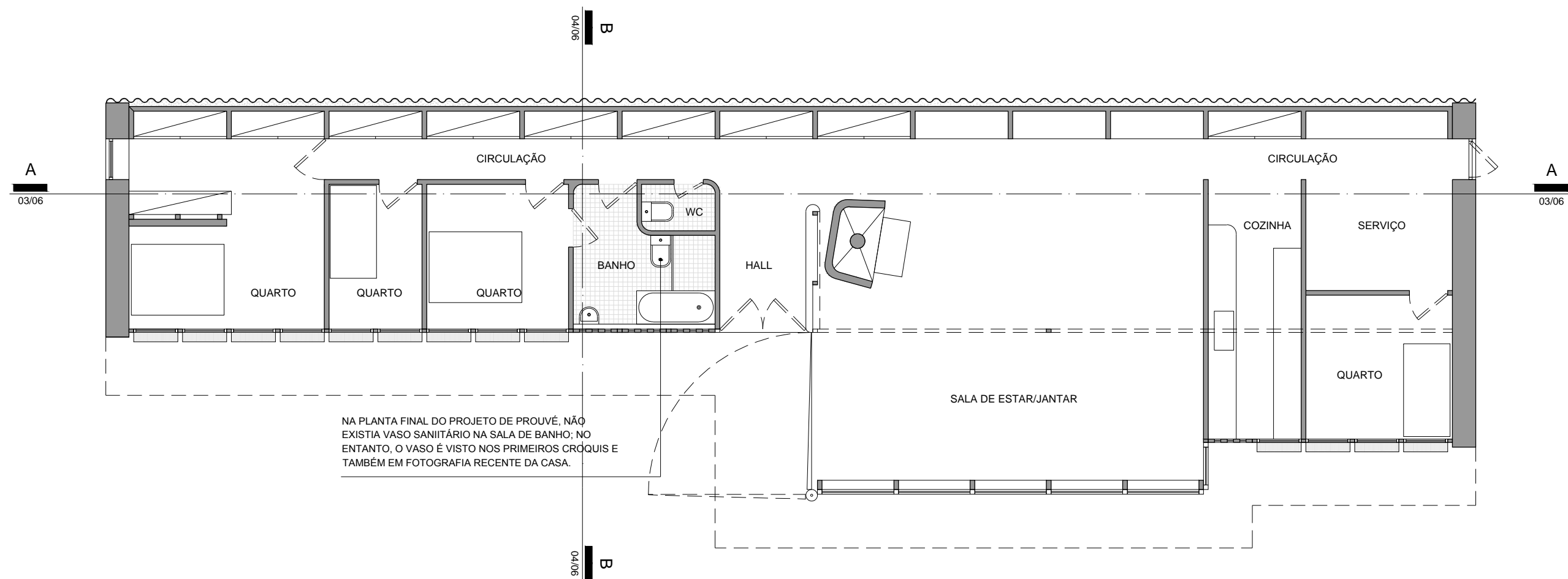
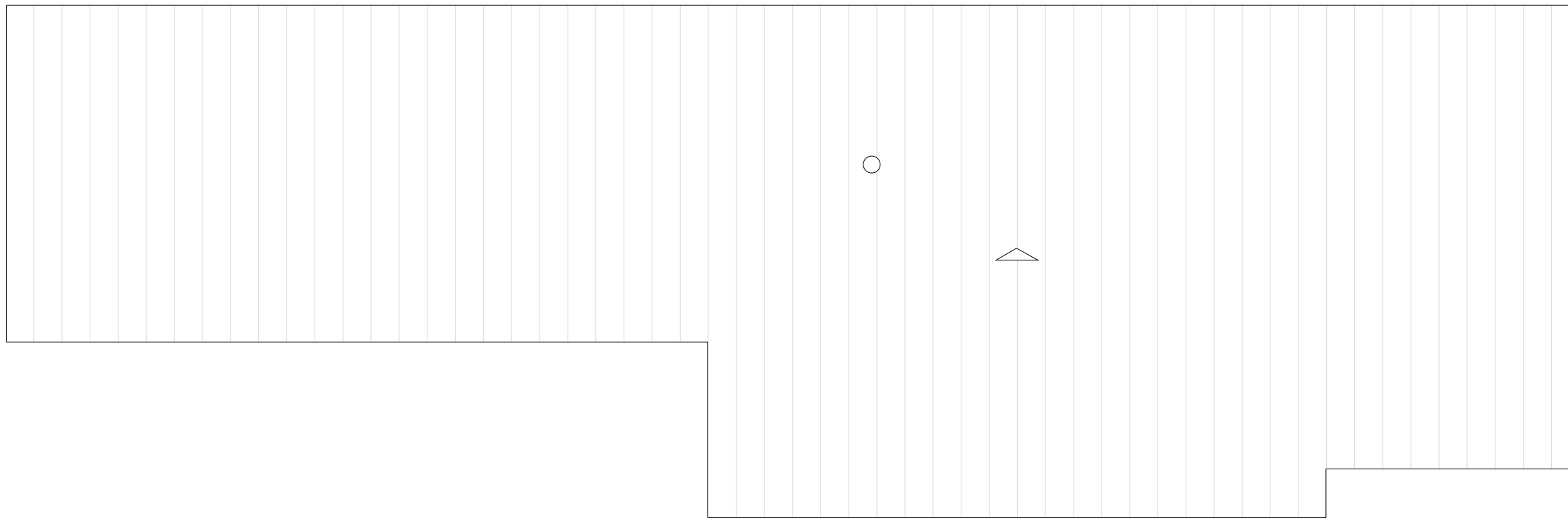
PERÍODO: 2013.1

PROFESSOR: WYLNNA VIDAL

PRANCHA

01

06



PROJETO: CASA DO ARQUITETO EM NANCY
 ARQUITETURA: JEAN PROUVÉ
 LOCAL: NANCY, FRANÇA
 ANO: 1954

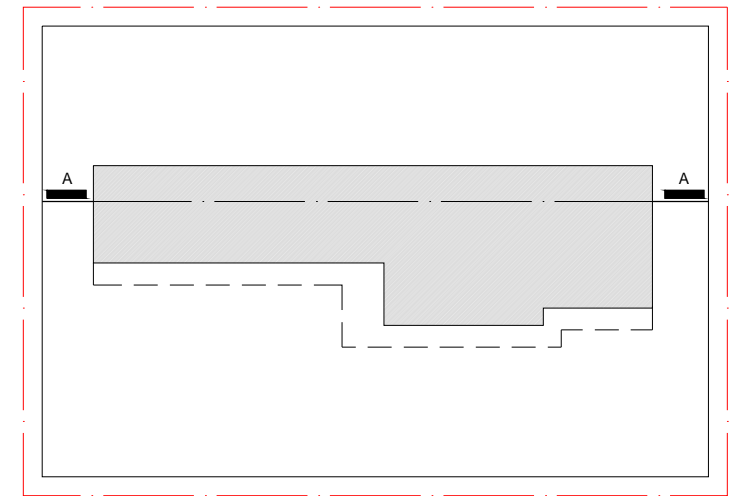
I. PLANTA DE COBERTA
 ESCALA 1/100
 II. PLANTA BAIXA
 ESCALA 1/100



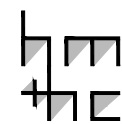
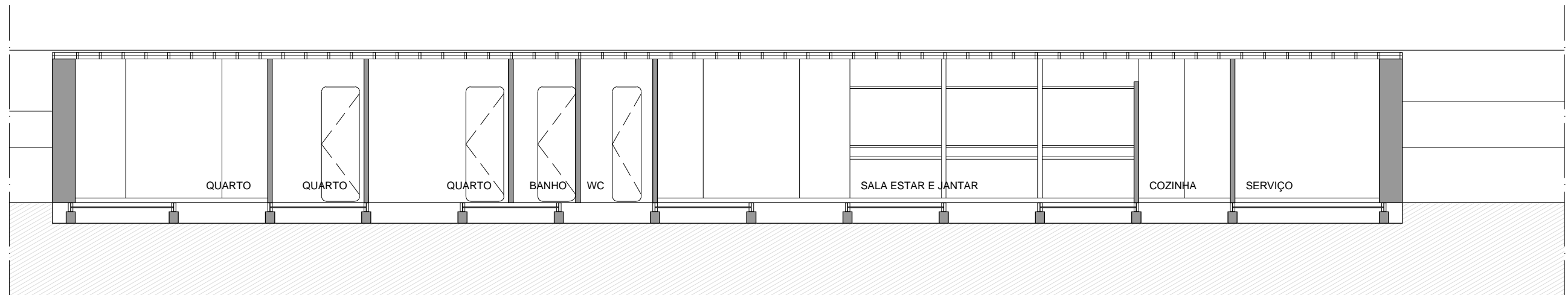
HM+HC - LPPM - DA - UFPB
 DISCIPLINA: ESTÁGIO SUPERVISIONADO VI
 ALUNOS: AMANDA ANDREGHETTI DANTAS
 RAYSSA DE CARVALHO MARQUES

PERÍODO: 2013.1
 PROFESSOR: WYLNNA VIDAL

PRANCHA
02
06

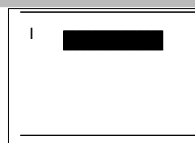


INDICAÇÃO CORTE AA
ESCALA 1/400



PROJETO: CASA DO ARQUITETO EM NANCY
ARQUITETURA: JEAN PROUVÉ
LOCAL: NANCY, FRANÇA
ANO: 1954

I. CORTE AA
ESCALA 1/100

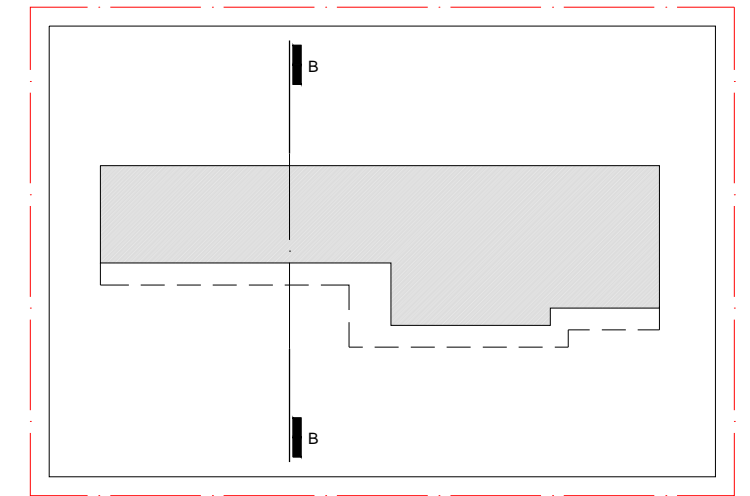
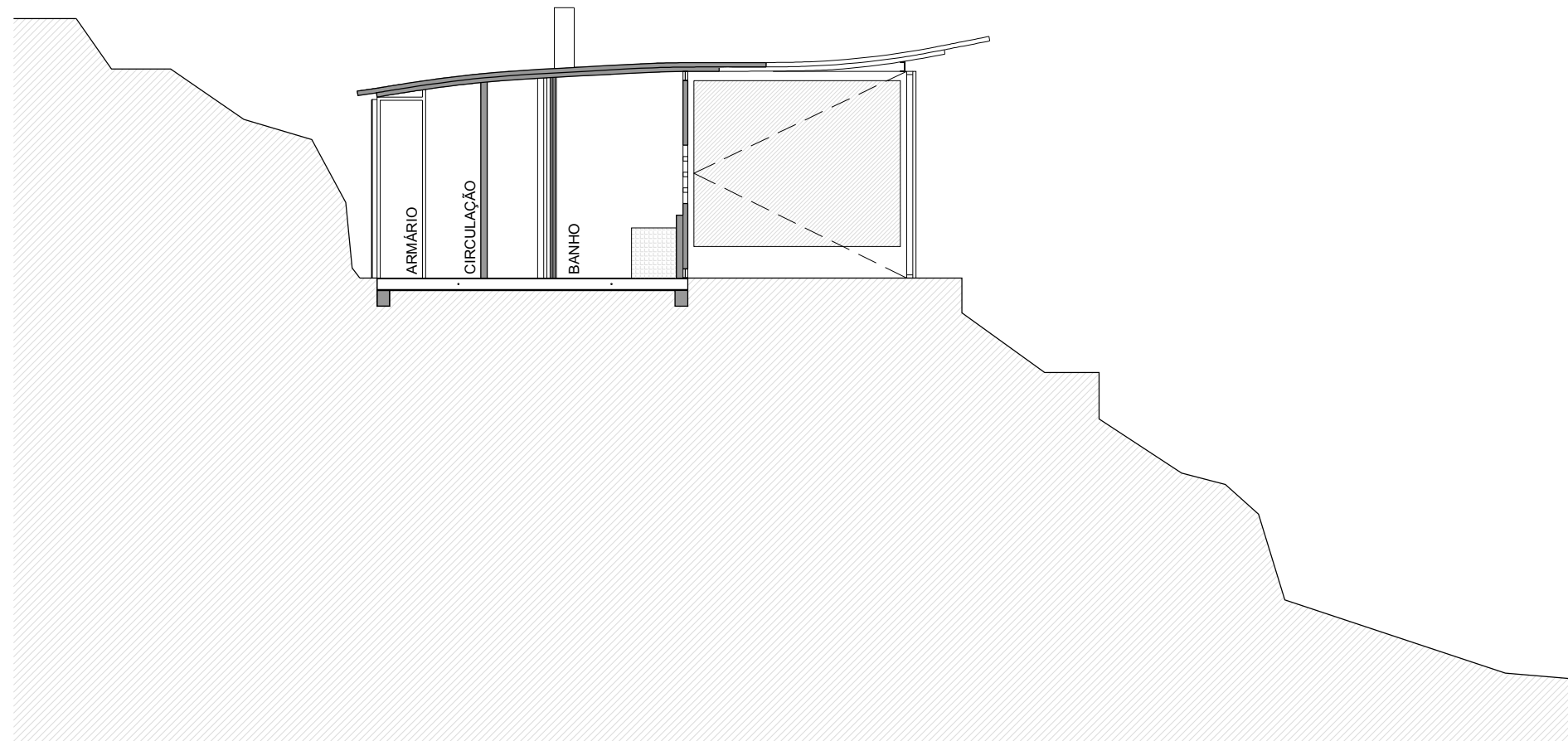


HM+HC - LPPM - DA - UFPB
DISCIPLINA: ESTÁGIO SUPERVISIONADO VI
ALUNOS: AMANDA ANDREGHETTI DANTAS
RAYSSA DE CARVALHO MARQUES

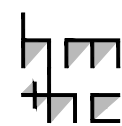
PERÍODO: 2013.1
PROFESSOR: WYLNNA VIDAL

PRANCHA

03
06

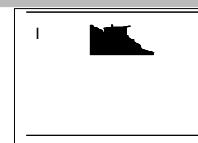


INDICAÇÃO CORTE BB
ESCALA 1/400



PROJETO: CASA DO ARQUITETO EM NANCY
ARQUITETURA: JEAN PROUVÉ
LOCAL: NANCY, FRANÇA
ANO: 1954

I. CORTE BB
ESCALA 1/100

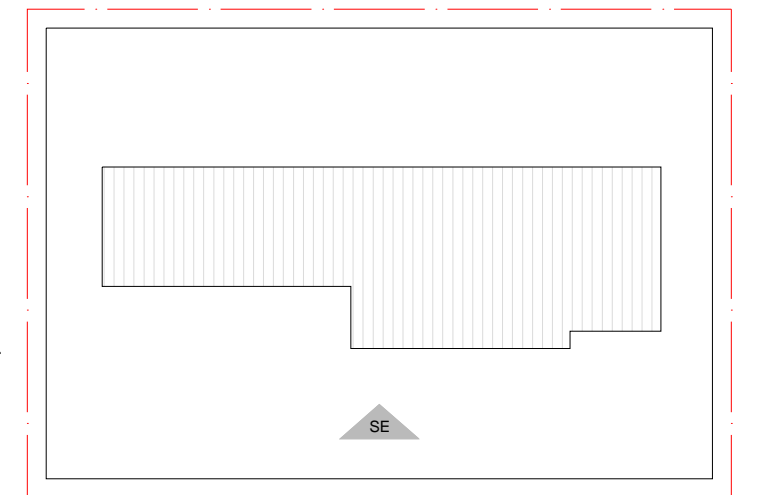
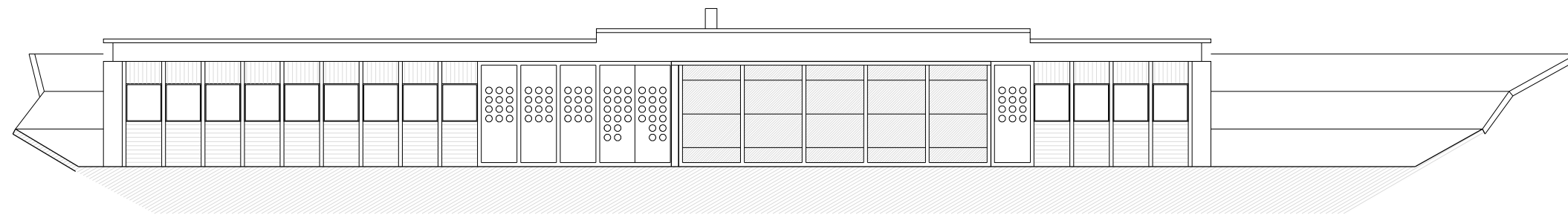


HM+HC - LPPM - DA - UFPB
DISCIPLINA: ESTÁGIO SUPERVISIONADO VI
ALUNOS: AMANDA ANDREGHETTI DANTAS
RAYSSA DE CARVALHO MARQUES

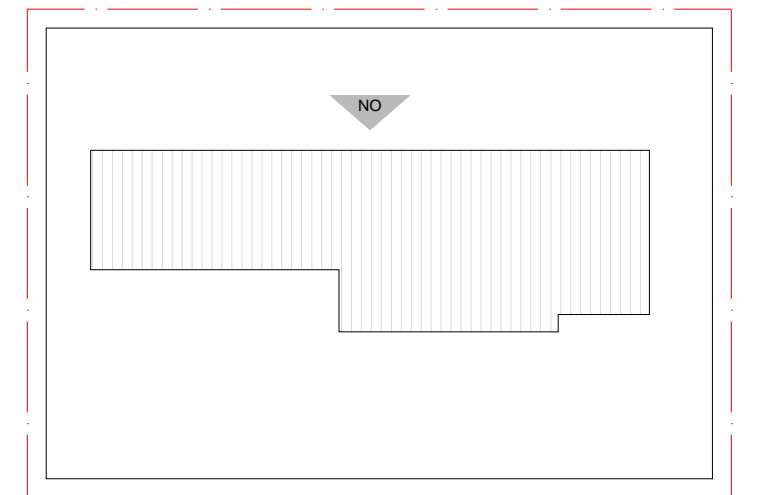
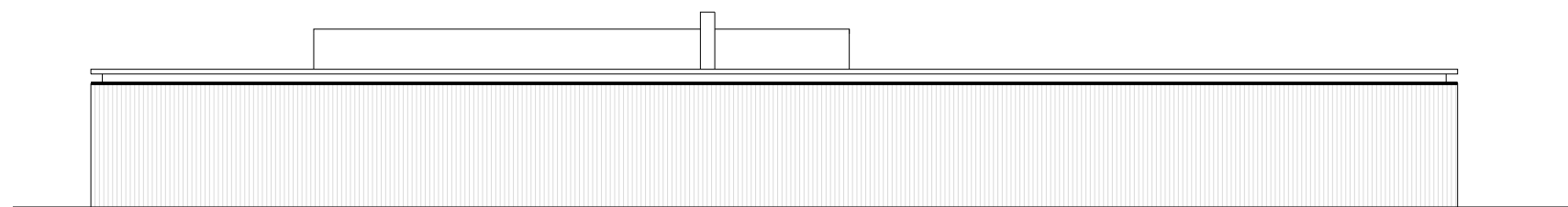
PERÍODO: 2013.1
PROFESSOR: WYLNNA VIDAL

PRANCHA

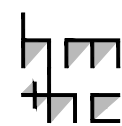
04
06



INDICAÇÃO FACHADA SUDESTE
ESCALA 1/400



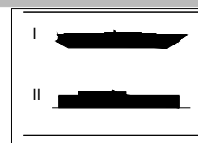
INDICAÇÃO FACHADA NOROESTE
ESCALA 1/400



PROJETO: CASA DO ARQUITETO EM NANCY
ARQUITETURA: JEAN PROUVÉ
LOCAL: NANCY, FRANÇA
ANO: 1954

I. FACHADA SUDESTE
ESCALA 1/150

II. FACHADA NOROESTE
ESCALA 1/150

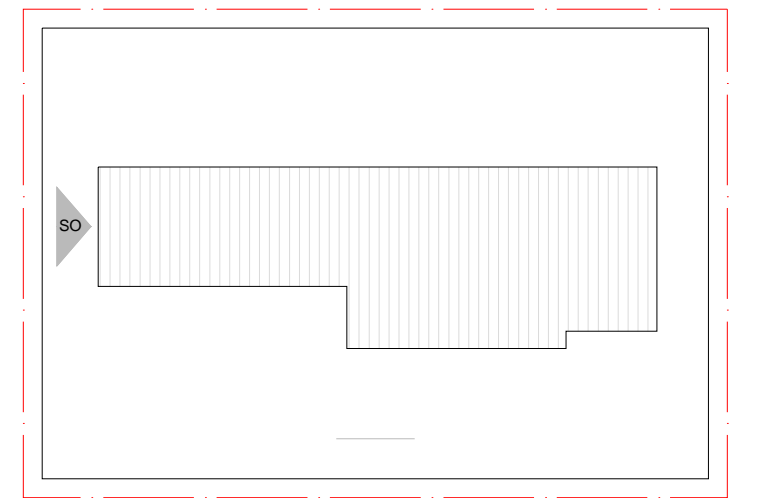
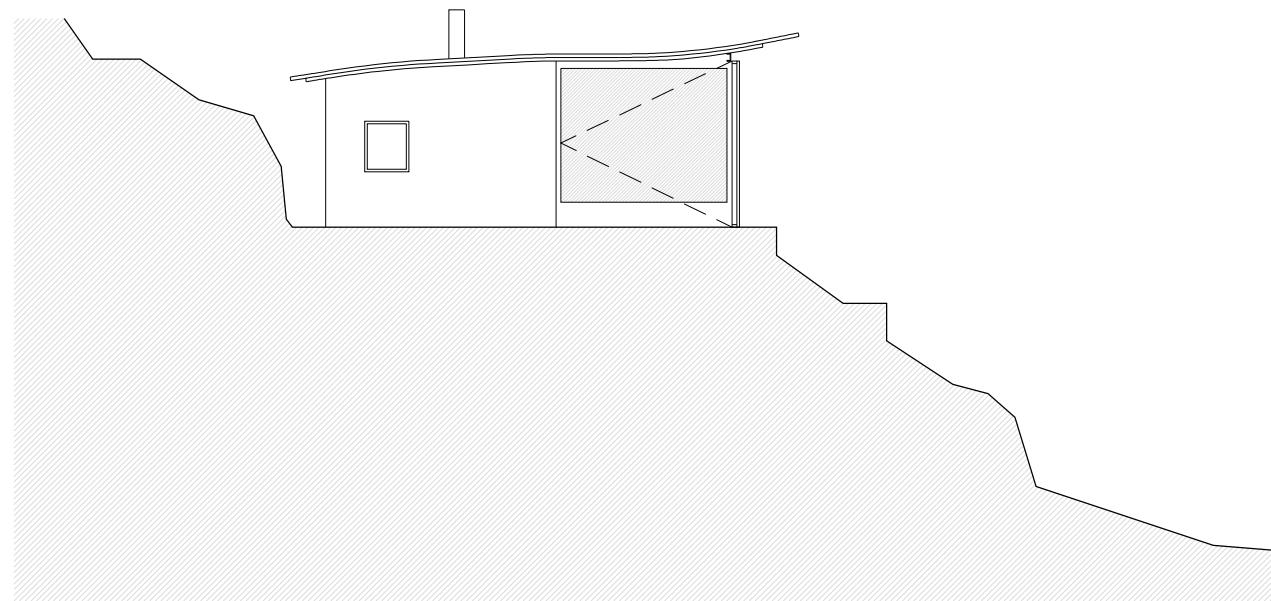


HM+HC - LPPM - DA - UFPB
DISCIPLINA: ESTÁGIO SUPERVISIONADO VI
ALUNOS: AMANDA ANDREGHETTI DANTAS
RAYSSA DE CARVALHO MARQUES

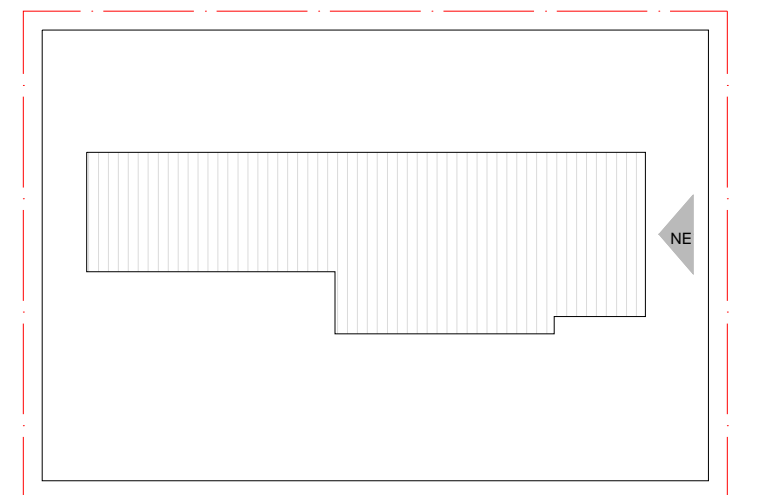
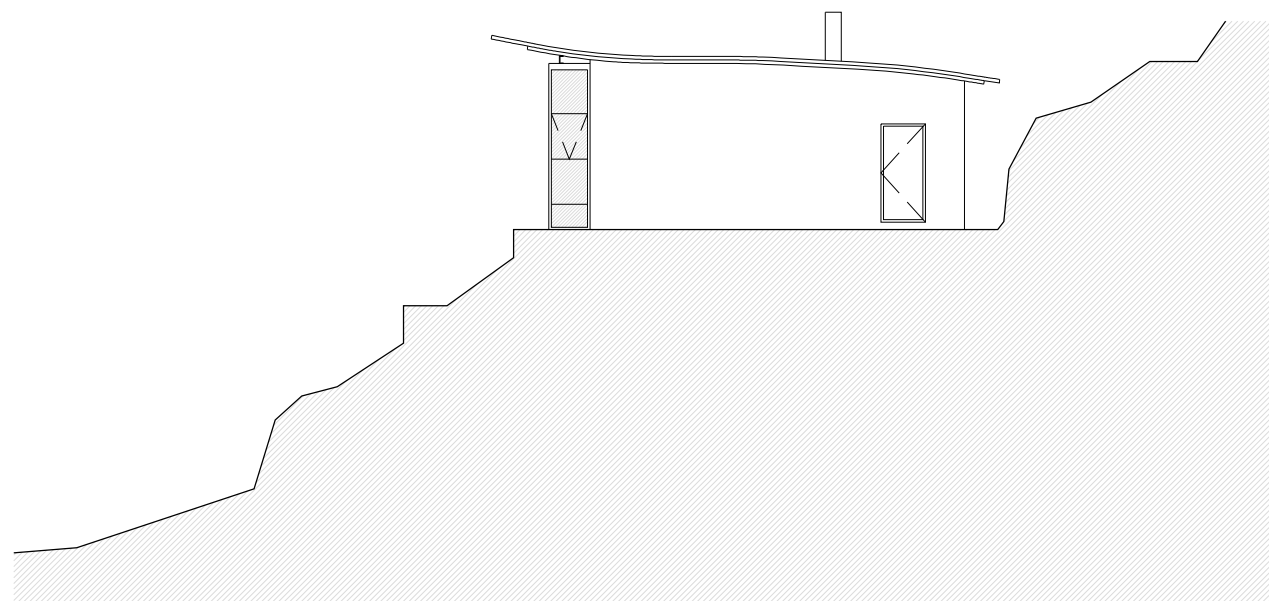
PERÍODO: 2013.1
PROFESSOR: WYLNNA VIDAL

PRANCHA

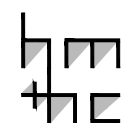
05
06



INDICAÇÃO FACHADA SUDOESTE
ESCALA 1/400



INDICAÇÃO FACHADA NORDESTE
ESCALA 1/400



PROJETO: CASA DO ARQUITETO EM NANCY
ARQUITETURA: JEAN PROUVÉ
LOCAL: NANCY, FRANÇA
ANO: 1954

I. FACHADA SUDOESTE
ESCALA 1/150
II. FACHADA NORDESTE
ESCALA 1/150



HM+HC - LPPM - DA - UFPB
DISCIPLINA: ESTÁGIO SUPERVISIONADO VI
ALUNOS: AMANDA ANDREGHETTI DANTAS
RAYSSA DE CARVALHO MARQUES

PERÍODO: 2013.1
PROFESSOR: WYLNNA VIDAL

PRANCHA

06
06